



9-21-1956

## Quaker Campus, September 21, 1956 (vol. 43, no. 2)

Whittier College

## 'Bury the Hatchet' Will End Freshman Hazing

With the traditional Bury the Hatchet Dance tonight, the Frosh-Soph rivalry will come to an end. Sponsored by the two classes, the dance is for the student body.

It will be held at the Whittier Woman's Clubhouse, at Friends and Bailey, from 8-12 p.m. There is no admission charge. Music will be provided by James Thompson and his Quintet.

Soph Social Chairman Carolyn Dundas is general chairman, and has been assisted by a committee of students from both classes. In charge of decorations are Jackie Hughes and Pat Fazakerley, with Hal Colbaugh heading up the entertainment committee. Esqana Milligan is chairman of the publicity committee and Karel Houtz is in charge of re-

freshments. The dance is stag and open to the entire student body. Dress is cottons and flats for the women and slacks and sport shirts for the men.

Chairman Carolyn Dundas reports that the Woman's Club will be decorated along with the theme of ending the inter-class rivalry.

## Dick Nixon Unexpectedly Arrives for Inn Breakfast

Some 350 Poets will not soon forget the breakfast they ate with the Vice President of the United States Wednesday morning in the Campus Inn. Richard Nixon unexpectedly walked in on the Poets and joined them for the meal.

The move was so unexpected, that he even deluded the press with the exception of one plucky

Life Magazine photographer, who shot picture after picture of the Veep greeting everyone from the diners to the dishwashers.

Nixon was accompanied by President Smith, and spent the time chatting and talking with the students. He even ventured into the kitchen, where he shook hands with Rich Elliott, commenting that, "The best students

are back here."

Nixon opened the GOP campaign in Whittier on Tuesday with a gigantic rally and motorcade. He spoke over television to an overflow crowd at Whittier High School. Groups from as far away as Santa Barbara and San Diego were present for the occasion.

A parade and program was staged early in the evening, with the Vice President arriving later via motorcade from Long Beach Airport. He spoke inside the 2400-capacity High School Aud, but his voice was carried to the throng outside by a public address system.

After spending the night in Whittier, he walked alone the two blocks from his hotel to the Inn. He didn't get a chance to eat his breakfast, though, before he had to leave in order to catch a plane for Nevada.

## Law, Grad Tests Set

Educational Testing Service has released the dates for the Law School Admission Test and the Graduate Record Examination for the coming year.

The Law test will be given in 100 locations on Nov. 10, 1956, Feb. 16, May 4 and Aug. 10, 1957. The Bulletin and an application can be obtained by writing Law School Admission Test, Educational Testing Service, 20 Nassau St., Princeton, New Jersey, four to six weeks in advance of desired testing date.

The application should be in at least 10 days prior to the test, to allow for handling.

Dates for the Graduate Record Exam are Nov. 17, 1956, Jan. 19, April 27 and July 6, 1957. The bulletin may be obtained with an application from the Princeton address, or by writing care of P. O. Box 27896, Los Angeles 27, Calif. The application must be returned 15 days before the test.

Applicants should inquire of the graduate school which of the examinations he should take and on which dates. Usually applicants for grad school fellowships take the exams in the fall.

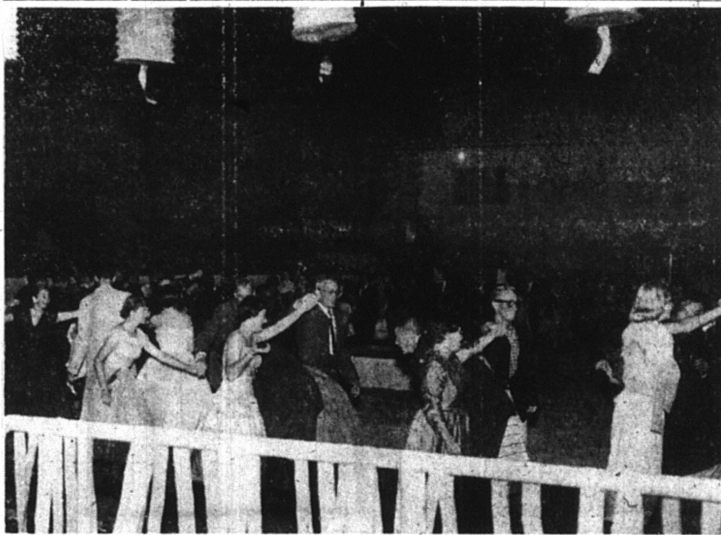
More than 9000 took the GRE last year, which covers general scholastic ability and advanced levels of achievement in 16 fields.

Candidates for the Law test are advised to take the test in November or February, since law schools select freshman classes in the spring. It features objective questions measuring verbal aptitudes and reasoning ability rather than acquired information.

### NOTICE

There will be a fee of \$1 on any change of registration beginning Monday, Sept. 24.

Seniors expecting to graduate in Jan., June or summer, 1957 should file a Degree Card in the Registrar's Office.



**STUDENT BODY RECEPTION** was held in the beautifully-decorated patio of Johnson Hall Saturday night, as the first all-school social function of the year. The theme was "Oriental Nocturne."

## PT Season Underway; Open House Scheduled

Preceding a busy year featuring three major productions, Poet Theatre will hold its annual Open House for the student body Monday evening from 8-10 p.m.

The production, "The Great Tug Boat Mutiny," will be presented three times during the evening, and is based on "The Caine Mutiny," one of the featured productions of the season.

Displays from past and future PT productions and free refreshments will round out the evening.

Based on Herman Wouk's Pulitzer Prize novel, "The Caine Mutiny Court-Martial," PT will present the stage version as its first production of the season on Nov. 15, 16 and 17.

In March "Anastasia" is planned and Shakespeare's "Twelfth Night" will be given in May. All three shows will be in the Woman's Club Auditorium.

Two one-act plays will be seen in the Amphitheatre on Oct. 11 and 12. One will be an old-fashioned melodrama and the other a religious drama.

PT tryouts are scheduled for Sept. 27, 3-5 p.m. and 7-9 p.m. in Poet Theatre. Those interested in working in Poet Theatre should contact Dr. E. Ray Nichols, director of the Theatre or Frank C. Bock, technical director.

## Patton Trip Convo Topic

Tuesday's Convocation will feature Jerry Patton from the Sociology Department reporting on his trip around the world, and especially his safari across the Sahara Desert and the heart of Africa. He was accompanied by his wife and son.

Mr. Patton, who was on a sabbatical leave, has just returned from the trip, and has retained the beard he grew abroad for Tuesday's talk.

Convo is scheduled for 9:50 at the Friends Church and is required of all regular students. The following week will be religious convo, as is the custom the first convo of each month.

### Chapel Schedule

Monday — Secret of Success, Carleen Finney.

Wednesday — Explanation of Silent Meditation, Dr. Pyle.

Friday — Hebrew Conception of Chosen People, Brahma Lauger.

## Lower Classmen Gird for Brawl

The annual Soph-Frosh Brawl will get underway this afternoon on Hadley Field as the two classes meet in the classic struggle to see whose numerals will remain on the Rock for the remainder of the semester.

The traditional events are Push Ball, Sack Race and the Tug-of-war. And it is reported that the women may also have a Tug-of-war. The side winning the most events will be declared the winner.

In recent years the Frosh have never won, but they indicate that this year "Things are going to be different!" However, the Sophomores have declared their intentions of "Showing the Class of '60 just who is the boss!"

The event will be refereed by seniors, and all participants must be physically fit.

## Cite Campus Parking Rules

The Grounds Department has once again issued a warning to all students to observe campus parking regulations which have been set up by the college, student exec and the fire department.

**MENDENHALL PARKING LOT**—No parking except for authorized personnel between 7 a.m. and 5 p.m.; Monday through Saturday.

**GENERAL CAMPUS AREA**—Except for authorized personnel in assigned spaces, there is no parking on the roadway from Berkeley to Circle Drive, on the road from the Gym to the tennis courts, between Founders and Naylor, AND ON THE CIRCLE DRIVE.

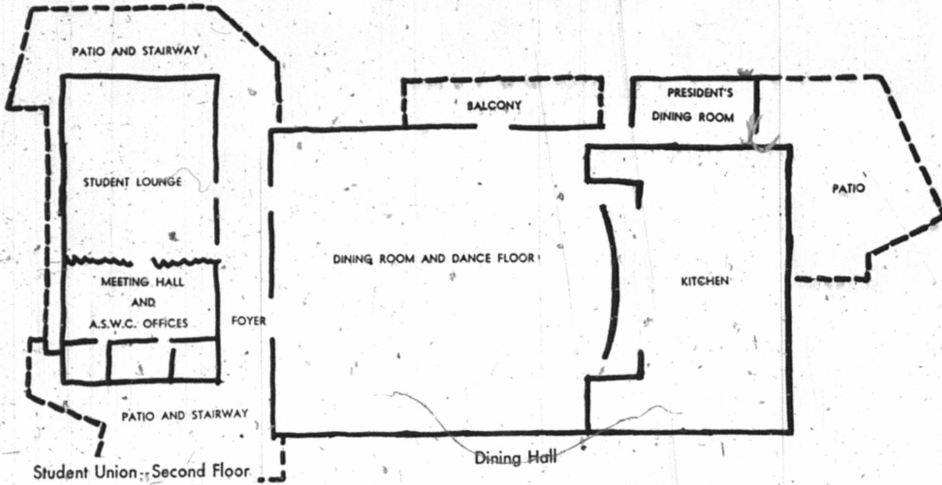
**WARDMAN HALL AREA**—No parking AT ANY TIME in unreserved sections of roadway, back of Wardman. Ten minute parking of occupied cars is allowed between the white lines, but no double parking is permitted or parking next to the red stripe.

**WANBERG AREA**—No parking at red curbs or on the roadway past where the trash cans are placed.

**OFFENDERS**—Those violating parking rules will be given tickets by the Grounds Department, which are payable in the Business Office. A first offense is \$50, with the fine doubling with each offense thereafter. If there is no motor vehicle registration card for the car filed with the college, the fine is doubled. All fines go into the Student Union fund.

Students are urged to familiarize themselves with these regulations, and are especially reminded that parking is NOT allowed on the Circle Drive at any time.

# 'Let's Build the Student Union'



VIC PONTRELLI

## Committee Led By Vic Pontrelli

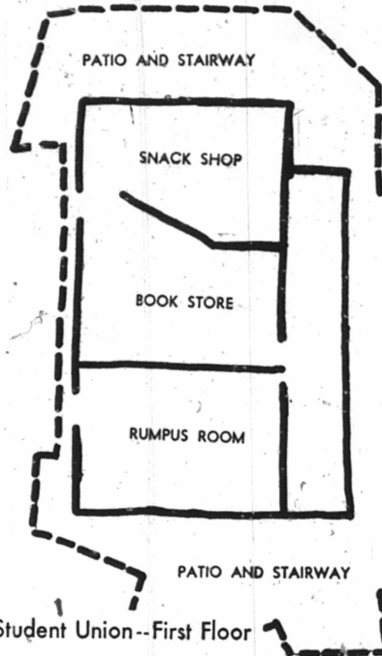
Vic Pontrelli, appointed last spring by the Student Exec to head the Student Union Committee, has been responsible for organizing and coordinating the various drives for the Student Union Fund.

The newly organized committee consisting of Doris Molumby, Diane Grunemay, Bobby Gomes, Roberta Garrett, Ron Zimmermann, Jim Daugherty, Frank Sekeris, Don Bagwell, Sharon Rosson, and Bill Wilkins, was set up last spring by the student exec. The committee also has the responsibility of informing the student body about the various other aspects of the future building and to make suggestions on the design which are submitted to the house and grounds committee of the board of trustees.

Last year the committee devoted much time observing other college campuses on which new or fairly new Student Unions had been built.

This year the committee will be devoted to just money-raising projects, the first being Student Workday on Oct. 10. The next fund-raising project is a "Street Scene" which will be held on Berkeley Way following the Air Force football game in November.

Pictured above and at the right are rough sketches of the floor plans of the proposed Campus Inn and Student Union. Above is the Campus Inn and the second floor of the two-level Student Union. At the right is the main floor of the SU. The structure will be placed west and slightly south of Founders. The Union will face on Painter, with the Inn facing towards Founders.



Student Union--First Floor

## SU Comes Closer; Plans Near Finish

Final plans for the construction of a new Whittier College Campus Inn-Student Union have recently begun and hopes are high that ground will be broken by the end of this year.

Total cost for the project has been estimated at approximately \$517,000, and it's to be constructed on the southwest corner of the campus. The structure will be a two-story concrete and steel building of a Mediterranean-modern style.

The new Campus Inn will house a dining hall for 400 which can be converted into a ballroom. There will be several small dining rooms for private groups opening onto the main dining hall. Modern kitchen facilities and storeroom area will be incorporated into the Campus Inn half of the structure.

The Union portion of the structure will be built next to Painter Ave. and will include two floors (since the area nearest Founders is 10 ft. higher than the Painter Ave. area).

The upper level of the Student Union will include a Student Lounge, meeting hall, and ASWC offices with patios at the north and south ends.

The lower level will consist of a snack shop, book store, rumpus room and also patios on the north and south ends.

Administrators and students have devoted time on other college campuses to observe newly constructed Student Unions of which ideas have been combined to include in the plans of the future Whittier construction.

Plans are being drawn up by the college architect, William Harrison, who is guided by suggestions from the house and grounds committee of the board of trustees with student representatives assisting.

Thoughts of a new Student Union on the Whittier campus began in 1952 when students accepted a bill to assess themselves \$5 a semester, which is put into a fund for the building.

One of the latest additions to the plans is for a fireplace in the Student Union, which will be in keeping with the architecture. Another feature is large view windows, opening onto multi-levelled patios. Parking facilities will be provided between the structure and Earlham Dr.

## SU Committee Needs Help

Volunteers are needed to help organize forthcoming fund-raising projects for the Student Union, according to Vic Pontrelli, SU chairman. The committee is devoting this year to money-making projects, and with all the work to be done, help and cooperation from the students would be appreciated.

All students interested in working are asked to contact Vic Pontrelli or just drop a note in his box in Founders Hall.



Student Union Committee listens as chairman Vic Pontrelli, (lower, center) explains latest additions to plans. Members are (l. to r.), Ron Zimmermann, Sharon Rosson, Bill Wilkins, Roberta Gomes, Roberta Garrett, Jim Daugherty and Diane Grunemay.

# LAY THE BRICKS IN '56

## Participation In SU Drive Urged

For many years, the thought of a Student Union on the Whittier College campus has occupied the minds of many "Poets", but it was not until four years ago that an organized student drive was undertaken in this behalf. Since that time, great progress has been made through the efforts of the associated student body, faculty and administration of our institution. Since the Student Union will consist of a dining hall, offices for student government, a fountain, a bookstore and a recreation lounge, it will afford an excellent opportunity for all our students to get together at a common meeting place, whether it's for a coke, a meeting, or perhaps to just discuss the day's activities or a ball game. With this idea, more or less, of spending one's leisure time at the SU, the students have for the past four years assessed themselves \$5 per semester.

With construction due to begin sometime in the very near future, it is with a great deal of satisfaction to know that the

endless hours of committee meetings, work, etc., which many a person has contributed toward this project, will soon pay off. One can take pride in the accomplishments of the members of the Whittier College Family who have helped to achieve the great strides we have made thus far.

Because of current developments and the planning that lies ahead on the SU, this issue of the Quaker Campus is devoted primarily to its progress for the last four years. It is the belief of the Student Executive Committee and the Student Union Committee that the associated student body and other interested people should be accurately informed on what is taking place as to any plans concerning the Student Union. We hope you will appreciate the efforts of President Smith, QC Editor Wade Holland, SU Committee Chairman Vic Pontrelli and others who have made this presentation possible.

—Bill "Mo" Marumoto  
ASWC President



Work Day Committee gives eager attention to the business of obtaining jobs for the hundreds of Poets who will be participating. They are (l. to r.), Dave Westsmith, Joann Enz, Marion Schwander, Jim Daugherty, chairman, Barbara Nagel and Marlene Catlin.

## Work Day Oct. 10 Will Boost Union Fund Well Over \$50,000 Mark

Oct. 10 has been set for the Fourth Annual Student Union Work Day, under the theme, "Lay the Bricks in '56". On this day, students will be dismissed from classes and will work for local firms and households. Their earnings will be added to the Student Union Fund.

The work event is a part of a long-range drive by the students to help finance the proposed College Student Union which will house a new dining hall, a place for social recreation and a student government center.

A committee of students under the direction of Jim Daugherty, Work Day chairman, will visit housewives, businessmen and manufacturers in an attempt to obtain employment for the student participants who will work 3-4 hours for a minimum of \$1 an hour. Students will be hired for jobs such as lawn cutting, car washing, baby-sitting, washing dishes, mopping

floors, selling merchandise, and spading gardens.

With approximately \$50,000 in the fund at the present, this workday will help considerably. Dr. Paul Smith has indicated that there is a chance that the

ground will be broken sometime this year.

In order to reach the goal, full co-operation of the student body is needed in this project. In past years there have been more jobs than students to take them.

The Work Day will begin at 8 a. m. and end at noon, when the participants will get together at Penn Park for the annual all-school picnic. Highlighted at the picnic will be the annual student-faculty baseball game.

Assisting Daugherty on the Work Day project are Joan Enz, mailing committee; Toots Catlin, publicity; Dave Westsmith, posters; Marion Schwander, filing; and Barbara Nagel, telephone.

This special two-page feature has been prepared for the Q-C by the Student Union Committee, under the direction of Marlene Catlin, publicity chairman.



JIM DAUGHERTY

## History of the Union Shows Much Success

Dreams of a Whittier College Campus Inn-Student Union will soon become a reality.

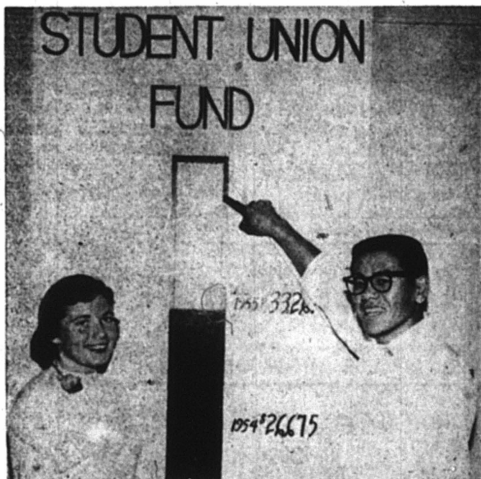
Since 1953, the students themselves have raised approximately \$50,000 towards their \$150,000 goal. According to Vic Pontrelli, Student Union chairman, the building cost is estimated at \$517,000 and will be constructed on the southwest corner of the campus. An additional \$100,000 has been estimated for equipment costs.

The drive for the Student Union fund began in 1952 when the students voted to accept "Proposition U", a bill whereby each student is assessed \$5 to their tuition fee each semester to insure the addition of \$10,000 per year to the fund. Since that time classes and organizations

have sponsored a variety of events such as the workdays, student-faculty basketball games, college carnivals, vaudeville shows and productions of "The Drunkard" sponsored by the AMS.

College administrators indicate that ground will be broken before December if . . . (1) the architect's plans are finished by next month (2) the construction bid is accepted (3) there are no other "interferences."

One of the biggest fund raising projects each year is the annual Student Workday which began four years ago under the chairmanship of Ken Greenbaum. This day is made possible through the cooperative efforts of both faculty and student committees.



Last Year Bill Marumoto and Marilyn Stutzman looked enviously at a possible goal of \$50,000 for the Student Union. The fund at the time had \$33,000, but has since been pushed to the \$50,000 mark, and this year the Work Day Committee is hoping to get well above the present total.



STRANGE JOB—These three girls got an unusual job last year during Work Day. Many jobs will be available, and students are urged to sign a Work-Day pledge, which can be obtained from the Work Day office in the Student Lounge in Mendenhall.



# Pres. Smith Hints at Early Groundbreaking

Though refusing to give a specific date, Dr. Paul Smith indicated in his opening Convocation address Tuesday that groundbreaking for the Student Union will be in keeping with the Work Day committee slogan of "Lay the Bricks in '56."

In reviewing the future campus, Smith indicated that "The Heart will go, and the Mail will come," as the Heart area in front of Founders passes into history to make way for the Student Union, and a mall running north and south comes into existence between the Union and Philadelphia.

Further progress is expected on North Campus, as that part of the college on Philadelphia is to be called, with the announcement that the college now owns all the property on both sides of Philadelphia between Painter and Berkeley Way. It is hoped in the near future, Smith said, to fill in the arroyo in front of Broadroads, to provide parking facilities. North Campus received a large boost last year with the addition of the student parking lot, the Administration Annex and the Education Office Building.

He also announced that the Memorial Chapel, a project of the Lancer Society for over 20 years, has been expanded into a college project, with all invited to participate in raising the necessary funds.

In the earlier portion of his talk, the President decried sham battles in political campaigns and reviewed the records of two Whittier graduates in the field of politics, George Outland, a Democrat, and Richard Nixon, the Republican. He stressed the necessity for "Politics on an intelligent level."

Dr. Smith challenged students to set their sights high, whatever field they might be entering. He said, "I hope you have nerve, nerve to dare your hopes to come true."

## Model UN Plans Meet

There will be an organizational meeting of the Model United Nations on Wed., Sept. 26. All students interested in working on the MUN project are invited to attend.

The annual Western United States Conference will be held at Stanford University in the spring. The meeting will be in Hoover 21 at 10 a.m.

## Aux. to Hear Pres. Smith

Dr. Paul Smith will address the first fall meeting of the Whittier College Woman's Auxiliary, Tuesday, Sept. 25, at 2 p.m. in Johnson Hall, according to Mrs. Ernest Massie, publicity chairman.

Mrs. Raymond Hunnicutt, president, will welcome as guests of honor, mothers of new students.

Mrs. Harold Votaw, program chairman, will introduce Mrs. Marilyn Walker who will give a devotional thought and will present Mrs. Jerold Shepherd, who will sing selected numbers.

Mrs. Luella Votaw, hospitality chairman, is in charge of the tea.

The Woman's Auxiliary has distinguished itself many times in the past through its donations to various campus funds, and improvements on the campus which the group has sponsored. Mothers are urged to attend, and a special invitation is extended to mothers of new students.

## Change Made For Publicity

A new system of coordinating publicity by campus organizations has been announced by Cita Mills, ASWC Publicity Chairman. In the future, each organization should through its own publicity committee make its posters.

These committees are welcomed to use the ASWC Publicity room and materials, but must leave posters in the box on the floor, to be cleared through the central committee before being posted.

All posters on campus must have this approval, or be subject to removal by the committee.

Any person interested in working on the central committee should contact Cita Mills through her box in Founders.

# Shouse Reports on Beirut Stopover En Route to University of Allahabad

By DICK SHOUSE

(Editor's Note: Dick Shouse is spending his junior year at the University of Allahabad in India under the "Junior Year Abroaders" Program of the Board of Foreign Missions (Ecumenical) of the Presbyterian Church, U.S.A. From time to time condensations of his letters will appear in the Q.C.)

7-3-56 — BEIRUT, LEBANON

—We were met by a missionary couple who took us to a very nice hotel and explained the money exchange, etc. The people in Lebanon are very friendly, even if they speak little English. Many speak French so some of our group could speak with them. The men are especially interested in American girls. If you marry one, you can come to the U. S.

Wednesday we saw the ruins of the ancient city Byblos thirty miles north of Beirut. It is one of the most important archeological sites in this part of the world. In this area are the remains of thirteen civilizations from Neolithic to Turkish. Julian Huxley spends a chapter on it in his book, FROM AN ANTIQUE LAND. A Crusader's castle dominates the area of the ruins. Also outstanding are a Phoenician temple, Roman theatre, sarcophagi: both Egyptian and Phoenician. Afterwards I swam in the Mediterranean at a rocky beach bounded by banana groves. The water is very beautiful here. It has brilliant contrasts of color, from a murky greenish brown to light green, turquoise and deep blue in very sharp changes which we don't find in California.

That night was the 4th of July and the U. S. Embassy held a reception to which some of us went. They had free drinks and hors d'oeuvres. We thought it was a little stuffy so we walked around, waiting until they played both Lebanese and U. S. national anthems, shook

hands with our ambassador and then left.

We visited the campus of the American University of Beirut. It would stand up favorably with any U. S. college of its size in appearance. Located on the crest of a hill it slopes down to the Mediterranean with scattered buildings and trees. Some of our Junior Year students will be here in the fall. The market place, located in the center of Beirut, was very interesting. Situated in narrow cobble stone streets with canvas strung from roof tops for shade, it is the oldest part of the city. At first it seems like much noise and confusion with people crowding and shouting on all sides. It is laid out in little lanes with each lane being a specific trade. We rode on a tram which costs 6/10 of 1 cent to ride if you stand up and 1 cent if you sit down.

Friday we went south down the coast to the ancient seacoast town Sidon. We went to the modern Presbyterian Mis-

sion School and were shown around by an American teacher. He took us into Sidon and we walked around the old section of the city. We stopped in and watched the bakers baking the flat Arabic bread as they have done for centuries. We ate Arabian food in a restaurant on the water front looking out on the ancient harbor and Crusader's fort. While at Sidon we also saw a Palestinian refugee camp. It is run by UNESCO and UNRWA with most of the food and clothing coming from the U. S. The refugees can't work in Lebanon so they just sit and hope somehow they can go back. I guess.

Beirut is the most western city in the Middle East. A tremendous amount of trade and travel pass through going both ways. It is very cosmopolitan for this reason and very western on the surface. It is too western for me and I am very glad I am going on to India where the influence is less obvious.

## Youth Leaders Needed For YMCA Program

Ever thought of being an advisor for a club group? The Y.M.C.A. has high school and younger aged groups of boys and girls who want an advisor who is fun and interested in them.

Each club group carries on a program that is centered around their interests and needs. Boys groups particularly enjoy swimming at the Y, sport tournaments, field trips and bull sessions. High school groups carry on a varied program which usually includes dances, service and money making projects, slumber parties and speakers.

A few \$200 scholarships are

available for students, who advise two clubs and have financial need.

If interested in being an advisor for high school or younger boys or girls, contact Sandy Boardman, Sharon Reed or Patty Sax at the college or call the Whittier Y.M.C.A.

... for Men and Boys

**Dave's** Tuxedo Rentals  
**SPORTSWEAR**

- Polished Cotton and Twill Ivy League Trousers & Shirts
- Angelus Peggers
- Levis
- Suede and Leather Jackets, All Colors
- Wagon Wheel, Reversible, and Finger Tip Jackets, All Colors
- Hdq's for Gym Wear All Colors

We Are Looking Forward to Advising You on Your CAMPUS APPAREL

11113 Washington Blvd.  
WHITTIER DOWNS  
OXford 5-8715

**ROGERS Pharmacy**

PRESCRIPTIONS  
DRUGS ★ COSMETICS

Philadelphia at Bright OX. 4-3160

**HARRIS MOTOR CO.**

CLINT (Red) HARRIS, '34

**OLDSMOBILE**

SALES and SERVICE

622 S. Greenleaf

★  
Make a Date  
with the "88"

★  
GENERAL REPAIRING  
BODY and FENDER REPAIR  
PAINTING



Official Auto Club Garage No. 229

24 Hour Emergency Service

Phone OXford 4-4612

**BOB BIRD**

Mobile Products  
TIRES BATTERIES  
LUBRICATION

346 South Greenleaf  
We Give S. & H. Grease Stamps  
FREE PICK UP AND DELIVERY  
OX. 4-9103

**PENNEY'S**  
ALWAYS FIRST QUALITY

Your Friendly Store  
in Uptown Whittier

142 N. Greenleaf Ave.  
OXford 4-3302

**COLLINS Trim Shop**

COMPLETE AUTOMOBILE UPHOLSTERING

SPORTS TOPS - SEAT COVERS

Custom Made

522 S. GREENLEAF AVE.

WHITTIER, CALIF.

OXford 4-4045 - OXford 4-4018

**Complete Fountain Service**  
Tasty HAMBURGERS  
SODAS and MALTS  
Made with CATERING ICE CREAM  
Homemade Breakfast Rolls and Pies  
WHITTIER COMPLETE DINNERS FOR \$1.50

Published by the Associated Students of Whittier College

**Quaker Campus**  
THE VOICE OF WHITTIER COLLEGE SINCE 1914

Entered as second class matter at the Post Office of Whittier, California

EDITOR	WADE HOLLAND
BUSINESS MANAGER	JACK EMERSON
ASSOCIATE EDITOR	MARLENE CATLIN
FEATURE EDITOR	LYNN BLYSTONE
SOCIETY EDITOR	MARILYN STUTZMAN
SPORTS EDITOR	ROGER FREDRICKSON
CIRCULATION MANAGER	JACK GRUBBS

# Society

PAGE 5 — WHITTIER COLLEGE QUAKER CAMPUS — SEPT. 21, 1956

## Fall Rush Procedure Outlined for Women

By CAP AND GOWN

Fall rushing for women's societies begins this Monday, Sept. 24. The Ionians rush dessert is first, followed by the Metaphonians, Palmer, Thalian, and Athenian desserts.

Invitations will be sent out a few days before the desserts. When you receive this invitation, it means the society is interested in you and wishes to know you better. It does not mean that they are asking you to become a member of the society.

During the "rushing" there is a rule stated in the Inter-Society constitution saying that an eligible non-society girl should not be in a group where only one society is represented. This is so that no one society may put too much pressure on a non-society girl and vice-versa.

This should be your guide as far as "society" behavior is concerned during this season. The "rush" party is the one exception to this rule, for at that time the societies and the rushees are trying to make the best possible impression on each other.

### Preferences

On Monday, Oct. 1, every eligible non-society girl will receive a note asking her to go to 115 Berkeley Way from 8:00 a.m. to 1:30 p.m. to state either her society preference, including a first and second choice, or the fact that she is not interested in joining a society. A list is then compiled for each society of the girls who indicated that society as either their first or second choice.

That night, societies meet and vote by secret ballot on whether or not they will "bid" the girls on their lists. These votes are tabulated by counters (women who are not connected with the societies) and the results are sent back to the place where the original choice was made.

### Bid Day

On Tuesday, Oct. 2, between 6:45 and 7:00 p.m. every girl who has been voted into a society will receive a note in her box in Founders telling her to go to the same place she made her society choices, to receive a bid from a society. When the girl receives the bid, she also receives an invitation to attend an "acceptance tea" from 7:00 to 8:00 p.m. on the same evening. Up to this time the society members do not know who will be their new pledges.

### Attention Men

All eligible non-society men interested in being rushed by societies MUST report to the office of the Dean of Students in Adm. Annex Monday to indicate desire to be rushed. There is no obligation, and all eligible men are urged to report.

## Society Slants

### IONIANS

The Ionians held their first meeting Monday night at the home of Kathy Whitlock. Phyllis Rogers was elected float chairman. The float and brunch were discussed. The rush will be Oct. Sept. 24.

### PALMERS

Roberta Garrett opened her home for the Palmer meeting. The rush, which will be Thursday, and a stag for Sept. 29 were the main topics of the evening. Louise McMillan is float chairman.

### ATHENIANS

Marilyn Mark was elected float chairman at the first Athenian meeting. An informal party and the rush were planned.

### LANCERS

Various projects such as homecoming and the rush were discussed at the Lancer meeting. An after-the-game party will be held at Bob White's home for members and their dates Saturday. The Lancers will be selling football programs at all the games.

### METS

Metaphonians met at the home of Barbara Morgan. Elections were held for two offices, Pledge Captain, Marion Schwander and Recording Secretary, Donna Searing replacing Carol Leach. Float chairman is Chris Earley.

### SACHSENS

Homecoming was the main topic of the Sachsen meeting. Plans for the Snowball to be held in December, were started.

### PENNS

Meeting at the home of Dave White, the Penns appointed Gene Anderson to head up the float committee. Semester activities were planned and committees were appointed for the Headless Hop, Oct. 26.

## Sr. Class Will Picnic Sunday

A weenie bake is schedule as the first fall activity for the senior class. It will be held Sept. 23, in Penn Park at 3 p.m.

Lois Fitzgerald, social chairman, is general chairman of the event. Serving on her committees are Barbara Ondrasik, food; Cita Mills, publicity; and Dave Skinner, games. The cost will be 25c per person.

All seniors are urged to attend.

## Marilyn's Meow

A WELCOME to all the fresh and transfers! It's great to have you with us. Everyone seems to have had a wonderful summer away from the books and all are ready for a new year of studies, meetings, and social activities.

The freshman have had an active week with the "Button Frosh" and other activities with the sophomores. But all will become friends again with the climax event, the traditional "Bury the Hatchet Dance" tonight at the Whittier Women's Club from 8 to 12 p.m. Everyone is invited to attend.

☆☆☆☆

With two beach parties held last Sunday, the social activities are under way.

The Ionians traveled to Huntington for their get together to talk over their summer activities. Some members attending were Audrey Tryon, Bev Williams, Ellen Fisk, Ann Rhodes, Joan Wolfenden, Liz Kenady, Cathy Agnew and Virginia Forrester.

The Orthogonians and Athenians held as their WUS Project, from last year, a weenie roast at Huntington Beach. Enjoying the wonderful beach weather and fun were Homan and Donna Moore, Sally and Joe Arcofio, Ann Stephens and Paul Downer, Dave Adams, Art Jessup, Bob Burns, Gail Hopkins and Harold Hickok, Janet Hile and Joe Sarthou, Betsy Coan, Lois Fopiano, Ginny Benson and Mickey Bevilacqua, Jo Anne D'Andrea and Dick Herr, Bobbie Hodge and Jim Olson, Ivan Guevara, Jim Murphy, Bill Brashears, Lynne Larraway and others.

☆☆☆☆

A reminder to societies and clubs... deadline for news is Tuesday noon. Please have your news in the society box in the Student Lounge by that time. It will not be published for that week if not in by then.

## Who's Whose

### MARJORIE and MACK

Marjorie Parker announced her engagement to Mack Mitchell by the passing of the traditional chocolates to the Ionians. The box was decorated with a turquoise heart on a pink background with pink and white flowers.

Both seniors, Margie is a music major and Mack is majoring in social science at Long Beach State. Receiving her ring on June 2, they plan to marry in June.

### KATHY and BILL

Kathy Heacock blew out the traditional Athenian candle announcing her engagement to Bill Nighswonger. Her box was trimmed with fall-colored flowers carrying out a fall theme. Kathy is a senior majoring in education and Bill is a sales representative for Marchant Calculators. They became engaged on August 10

and plan to marry next summer.

### ANN and PAUL

Paul Downer announced his engagement to Ann Stephens to the Orthogonians last Monday night. Paul, a senior, is a business administration major. Annie is a Athenian and teaching kindergarten in Torrance. She received her ring on Sept. 16 and plans to be married next summer.

### JUDY and BOB

Bob Roush became engaged to Judy White on Sept. 14. A summer wedding is being planned by the couple. Bob is a senior, majoring in P. E. Judy attended Oxy.

### EVELYN and GABE

Evelyn Klees received Gabe Breyeans' pin at Catalina on July 13. He now is in the army, stationed at Ft. Sill, Oklahoma. While at Whittier, Gabe was a Franklin. Evelyn, a Palmer, is a senior with a sociology major.

### JANIS and JERRY

On July 19, Jerry Jertberg gave his pin to Palmer Janis Cook. Jerry is a member of the Franklin society and is a senior majoring in Geology. Janis, a sophomore, is a biology major.

### META and JIM

Meta Mitchell surprised the Ionians by announcing her engagement to Jim Michaelson. Her box of chocolates was covered with white carnations over aqua brocade.

She received her ring on August 14. Jim is a graduate student with a history major and Meta is a senior majoring in history also. A summer wedding is being planned.

## THEATRES

### WHITTIER

Friday - Tuesday  
THE FASTEST GUN ALIVE  
Glenn Ford • Jeanne Crain  
THE KILLING  
Sterling Hayden • Coleen Gray  
Starts Wednesday  
THAT CERTAIN FEELING  
(VistaVision-Color)  
Bob Hope • Eva Marie Saint  
PILLARS OF THE SKY  
(CinemaScope-Color)  
Jeff Chandler • Dorothy Malone

### SUNDOWN DRIVE-IN

Friday - Tuesday  
THE MAN WHO KNEW TOO MUCH  
(VistaVision-Color)  
James Stewart • Doris Day  
THE TROUBLE WITH HARRY  
(VistaVision-Color)  
Edmund Gwenn • John Forsythe  
Starts Wednesday  
BANDIDO  
(CinemaScope-Color)  
Robert Mitchum • Ursula Thiess  
THE AMBASSADOR'S DAUGHTER  
(CinemaScope-Color)  
Olivia de Havilland • John Forsythe

### WARDMAN

Friday - Tuesday  
THE MAN WHO KNEW TOO MUCH  
(VistaVision-Color)  
James Stewart • Doris Day  
THE TROUBLE WITH HARRY  
(VistaVision-Color)  
Edmund Gwenn • John Forsythe  
Starts Wednesday  
BANDIDO  
(CinemaScope-Color)  
Robert Mitchum • Ursula Thiess  
THE AMBASSADOR'S DAUGHTER  
(CinemaScope-Color)  
Olivia de Havilland • John Forsythe

### ROXY THEATRE

Friday - Saturday  
BLOOD ALLEY  
(CinemaScope-Color)  
John Wayne • Lauren Bacall  
THE ADVENTURES OF HAJJI BABA  
(CinemaScope-Color)  
John C. Reilly • Elaine Stewart  
Sunday - Tuesday  
THE GIRL IN THE RED VELVET SWING  
(CinemaScope-Color)  
Ray Milland • Joan Collins  
GREEN FIRE  
(CinemaScope-Color)  
Grace Kelly • Stewart Granger  
Wednesday - Saturday  
THE BOTTOM OF THE BOTTLE  
Van Johnson • Joseph Cotton  
Peggie Castle  
THE HOUSE OF BAMBOO  
(CinemaScope-Color)  
Robert Stack • Robert Ryan  
Shirley Yamaguchi

## MIRIAM'S

A dress of distinction  
Created just for you  
The length, the breadth, the style  
It's quite complete it's true.  
Let us wander down Greenleaf street

"The Nicest Store in Town"

158 N. GREENLEAF AVE. • OXFORD 4-7158



## Hil! Girls!

Come see our Remodeled Yarn Shop

## GRAY'S YARN NOOK

130 N. BRIGHT AVE.

BIG September Sale of Sock Yarn

2 oz. Skein—Half Wool—Half Nylon  
Regular \$1.25 now 75c

1 oz. Skein—All Nylon yarn

1 oz. Skein—All wool yarn  
Regular 70c now 49c

Balls of Angora from England

75% Angora

25% Nylon  
Regular 65c now 39c

SOCK HIM NOW!

## Home Ec Plans Smorgasbord

A Smorgasbord is being planned for Sept. 26 by the Home Ec Club members. It will be held in the Home Ec building at 6 p.m. with cottons as the dress and the price \$1.

The chairmen are Carol McLeod and Cathi Agnew, with Karel Houtz and Virginia Buck, invitations; Pat King, decorations; Nancy Sharpe, clean-up; Luene Holmes, publicity; and Ann Larson, entertainment assisting.

All girls who do not belong are also invited.

Greenleaf  
*Tibbetts*  
at  
Philadelphia

FASHIONS FOR CAMPUS AND CAREER

COLLEGE BUDGET ACCOUNTS AVAILABLE

# Rogatory Remarks

—by Rog—

Last year saw the Whittier College Football squad come within literally minutes of the SCIAC football crown. The Pomona-Claremont game will be remembered by both players and fans as the most exciting and disappointing of games. The game and the conference crown were lost in the last few minutes of that game. It took the 1955 team two weeks to regain its poise after that loss.

Taken in this light each game is of utmost importance and is not just a moment of fun for player and fan before the really BIG games. Each game is a big game and should be played with that thought in mind.

It has been said that a great football team plays top-rate ball ALL the time . . . a good team most of the time. What about the Poet squad this year? Which of these classifications the 1956 Whittier team falls into is going to be decided in great part by its showing this Saturday against Santa Barbara. It is going to take four full quarters of top-rate team football to subdue the Gauchos.

The Frosh squad travels to Oceanside this evening to open their season against the always hard to beat Oceanside J. C. The team, with but a limited amount of practice, is going to have a real battle on its hands and needs your support. All are urged to attend the game and help to bring the team home victorious. Kickoff time is 8 p.m.

**IS YOUR SPIRIT SHOWING?** Much has been said about Whittier College traditions . . . one of the oldest is that of producing fine athletic teams. 1956 is not going to be an exception to the rule. Don't you be an exception to the rule either! Show off that spirit tomorrow evening and help to RING home our first season victory.

# Yell Leaders Urge Support for Team

By Jim Daugherty

This year is going to be one of the best in the history of Whittier College if every Poet will get out and support the growing spirit that has been revived by the frosh class. The class of '60 has shown the way for the rest of the school. This spirit must not however be of the fair-weather variety. The score column at the end of the game is not necessarily the spirit rating . . . but the score may very well depend on the amount of spirit shown by the Poet fan.

This year the spirit of Whittier College will be symbolized by our

new victory bell. The bell has been taken down from its resting place above Founders Hall, been re-plated, and mounted on a purple and gold steel standard. At the beginning of each game the bell will be ushered into the game by the yell leaders and every Poet fan will stand and cheer . . . let the spirit of the evening not wait until the first touchdown. We want the team to know from the opening minutes that not only are we satisfied but we are behind them all the way.

So this Saturday when the Victory Bell comes into the field let the Whittier College spirit ring out.

# Gauchos Invade Whittier For Season's Opener Sat.

## Probable Starting Line-Ups

Santa Barbara			Whittier		
83 Herb Williamson	190	LE	180	Dick Beam	65
77 Ron McGuire	220	LT	185	Bill Brashears	68
63 Jim Pullman	190	LC	185	John McMurtry	53
52 Pat Downey	200	C	185	Dick Ferguson	73
64 Lex Byrd	200	RG	200	Paul Downer	71
72 Lep McCabe	220	RT	265	Charlie McMurtry	62
88 Kelley Hoover	205	RE	170	Harvey Garcia	23
12 Don Trauthen	180	QB	190	Geo. Vallance	46
29 John Morris	175	LH	189	Pat Putnam	19
48 Dick Juliano	185	RH	140	Bob Paholsky	36
34 Fidenzio Brunello	205	FB	190	Max Fields	

## 'Most Difficult Game' -- Allen

Preparing for the final day of practice before the season opener against Santa Barbara, Head Football Coach George Allen when asked of the Poets' chances of victory said that the Poet squad would be as ready as possible considering the short time the players have had to get into top rate shape.

He further stated that Santa Barbara has had over a week more practice than the Whittier team and may for that reason be all the more ready for the clash. Coach Allen stated that the Santa Barbara squad was going to be the toughest game that the Poets face all year.

"They may not be the best team we play but they most certainly will be the most difficult to play. The opening game is always the toughest and when almost an entire team has to be molded in two weeks of practice from a relatively inexperienced group of players the task is even harder."

The Gaucho team led by a large group of returning lettermen, including most of last year's starting eleven, plus a host of highly touted newcomers from high schools and Junior Colleges is ready to win. The Gaucho forward wall, the key to the success of any team is built around such men as Ron McQuire (220 lbs.) and Lex Byrd (200 lbs.) Byrd was selected on the All-American J. C. team last year.

Santa Barbara is the key to a successful Poet season . . . but it is going to take top rate football by the Poet eleven to put down the victory-hungry Gauchos.

## Cross Country Meeting Mon.

Coach Brad Merrill has set the date of Monday, Sept. 24 for the first meeting of all prospective varsity and frosh cross country runners.

The meeting will be held at 4 p.m. in the apparatus room of the gym, overlooking the basketball court. This meeting is a must for all men as the practice schedules and meet plans will be discussed in great detail.



GEORGE ALLEN will attempt to better last year's 8-2 football season beginning tomorrow against Santa Barbara.

## Intramural Opens Tues.

AMS vice-president Bill Wilkins announced yesterday that the 1956 intramural sports year will begin next Tuesday, Sept. 25 when the Sachsens and the defending champs, the Orthogonians play the first touch football game of the season. Game time is 4 p.m. on the girls' athletic field.

This year the football league will consist of seven teams with representatives from the William Penns, Sachsens, Franklins, Lancers, Orthogonians, Freshman class, and an Independent team.

In addition to the season opener, next week's schedule will include a Frosh vs. William Penn clash on Wednesday and Lancer vs. Frankling on Thursday. All games are scheduled to start at

## Football Poll

Each week throughout the football season, the Quaker Campus will run a National Football Poll. Those participating are Coaches George Allen and Aubrey Bonham, Athletic Rep Bill Harmon, the Exec column, Doug 'n' Mo, the sports column, Rogatory and Frosh proxy Ed Ferguson.

Individual awards and team trophies are the prizes awaiting the top players and teams so the competition is expected to be tough again this year, according to Wilkins.

There are still openings for players on both the Frosh and Independent teams. Any interested men are urged to contact Bill Wilkins in person or by leaving a note in his box in Founders as soon as possible.

## Managers Wanted

The Varsity football team is in immediate need of managers. Interested men contact Dale Headley, Coach Allen or Bill Thomas.

OUR BUSINESS IS SOUND  
**HI FI HAVEN**  
High Fidelity Sound  
Systems, Components and Records  
442 S. GREENLEAF OX. 41-4112  
(Wholesale Dist.)

## RAY CLEANERS

CLEANING - PRESSING REPAIRING  
416 E. PHILADELPHIA ST.  
Phone OX. 41-1397

## Upton's Jewelers

For gifts you give with pride  
Let Upton's Jewelers be your guide  
132 E. PHILADELPHIA ST.  
OXford 4-4134  
Whittier, California

IT'S  
**Jerry's**  
IN WHITTIER  
...By Far  
Peggors-Levis-Ivy Leaguers

# Q-C National Football Poll

SC vs. Texas	George Allen	Aubrey Bonham	Doug 'n' Mo	Bill Harmon	Rogatory	Ed Ferguson
UCLA vs. Utah	SC	Texas	SC	SC	Texas	SC
Georgia Tech vs. Kentucky	UCLA	UCLA	UCLA	UCLA	UCLA	UCLA
Notre Dame vs. SMU	Georgia	Georgia	Georgia	Georgia	Georgia	Georgia
California vs. Baylor	Notre Dame	Notre Dame	Notre Dame	Notre Dame	Notre Dame	Notre Dame
Oxy vs. Long Beach	Baylor	Baylor	California	Baylor	California	Baylor
Stanford vs. Washington St.	Oxy	Oxy	Oxy	Oxy	Oxy	Oxy
Pepperdine vs. Flagstaff	Stanford	Stanford	Stanford	Stanford	Stanford	Stanford
Vanderbilt vs. Georgia	Pepperdine	Pepperdine	Pepperdine	Pepperdine	Pepperdine	Pepperdine
N. Carolina vs. N. Carolina St.	Vanderbilt	Vanderbilt	Vanderbilt	Vanderbilt	Vanderbilt	Vanderbilt
	N. Carolina	N. Carolina	N. Carolina	N. Carolina	N. Carolina	N. Carolina

Gym Trunks \$1.25-\$1.50  
Athletic Supporters 90c  
"Chuck Taylor" Basketball Shoes \$7.50  
SWEAT SOX — SWEAT SHIRTS AND PANTS  
TENNIS & BADMINTON SUPPLIES  
at  
JOHNNY BAKER'S ('36)  
**WHITTIER SPORTING GOODS**  
157 S. GREENLEAF OXford 4-3144

**GATEWOODS BARBER SHOP**  
"Where College Friends Meet"  
ALL NEW SHOP — AIR CONDITIONED  
THREE EXPERT BARBERS  
CATERING TO ALL TYPES OF HAIRCUTS  
for  
THE SMART COLLEGIAN  
FLATTOPS OUR SPECIALTY  
136 1/2 E. Philadelphia (Downstairs)