



Whittier College  
Wardman Library  
**Poet Commons**

---

Acropolis (Yearbook)

Archives and Special Collections

---

1988

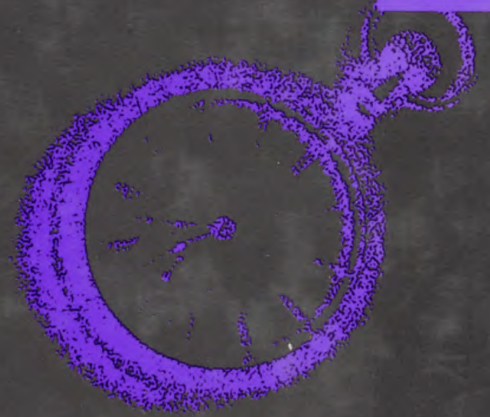
## 1988 Acropolis

Whittier College

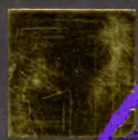
Follow this and additional works at: <https://poetcommons.whittier.edu/acropolis>

---

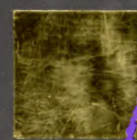
A  
DAY  
IN  
THE  
LIFE



Whittier



College



1988





DAY  
IN  
THE  
LIFE



|           |                                       |            |   |
|-----------|---------------------------------------|------------|---|
| <b>2</b>  | <i>Opening</i>                        | <b>98</b>  | <i>Societies</i>                            |
| <b>12</b> | <i>Events</i>                         | <b>118</b> | <i>Clubs, Activities,<br/>Organizations</i> |
| <b>48</b> | <i>Seniors</i>                        | <b>154</b> | <i>Sports</i>                               |
| <b>66</b> | <i>Campus Life</i>                    | <b>192</b> | <i>Closing</i>                              |
| <b>78</b> | <i>Faculty, Staff, Administration</i> |            |   |

The Acropolis, Volume 76  
Whittier College  
Whittier, California

# Whittier College: A Day In The Life





A DAY IN THE LIFE at Whittier College could contain inconceivable options. The day many begin in a normal sunny California style or with the rumbling undertones of a powerful earthquake. It could be a day of classes, beaches, theater, or shopping. There might be any number of sports to cheer, from lacrosse to water polo. Down in Uptown a parade may cruise by while friends sip cool drinks at a favorite cafe. Later you can compare that cafe to the gourmet cuisine of the CI, while laughing over the latest Bloom County in the QC. Of course, one can't be with friends without

sharing the latest about who did what with whom how many times and where. That night the possibilities are infinite. You could go out on a date, but that's almost too much work. There's always the Club. Then again, the night life of L.A. is just about unbeatable. You do have a research paper due Monday, but it really should be illegal to give anyone that option. There's a time and a place for everything, but first things first. You have to establish priorities to get through A Day In The Life at Whittier College.





# A Week-End in the Life

It's 3:00 on a Friday afternoon, and your last class of the day has just ended with a half-heard "have a nice weekend" from your professor. Every weekend, Whittier College students test their creativity finding things to do on the weekend. On Friday afternoons, happy hour at El Patio is a popular activity; or if you prefer the party atmosphere, the Friday Afternoon Club Unlimited meets every Friday at a different location. Saturday

night there is usually an "Open" in The Club, which is a great way to have fun after a day at the beach, the pool, or even sleeping late. And for a change of pace, there are numerous movie theatres in the area, as well as Hollywood and Westwood, for adventurous students who want to get away. What do students do on Sunday after a weekend of fun? Study — of course!

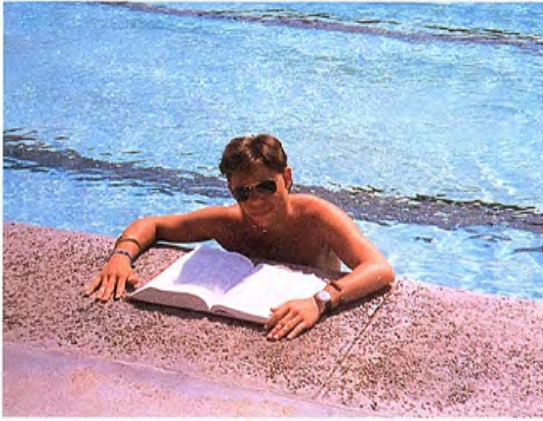


# Between Classes

Where can you have lunch, go for a swim, catch some rays and still be on time for a 2:10 class? Whittier College! The college pool, better known as the "concrete beach," is a common place to find many students on a sunny day. If the day's not so sunny, there is almost always a crowd in the Student Union huddling around the video games and pool table.

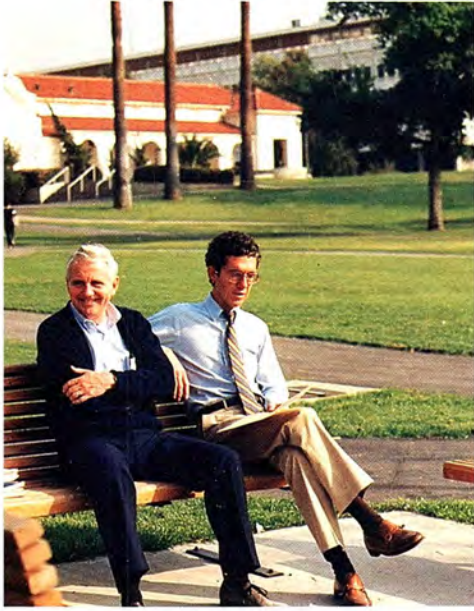
Walking across campus, a few LaCrosse players tossing a ball around is a common sight. One may also get in on a good game of Frisbee golf. Then there are the "missing students." The ones you seldom see except at meal time. They're most likely sleeping, off to the beach catching some "gnarly" waves, or inside watching old "Brady Bunch" re-runs. These things and more are all part of the daily life of a Whittier College student.





# Professors





A day in the life of a Whittier College is definitely something special. We were rated by *U.S. NEWS & WORLD REPORTS* as the third best college in its class, in the nation. In order to keep up with that sort of excellence, Whittier's professors engage in many activities. They feel that

education goes beyond the classroom, and many are involved in community and extra-departmental activities, as well. Each professor brings their individual contributions to the college, and by staying involved, definitely contributes to the Liberal Education process we are known for.



## A DAY IN THEIR LIVES STUDYING ABROAD

Hvad er jeres mest mindeværdige oplevelse studiet uden lands? In English, "What is your most memorable experience in studying abroad?"

"My trip to the Soviet Union was incredible. How many people get to go to the Soviet Union? It was nice to walk through a park, seeing a park bench and knowing that it's not someone's home for the evening." . . . . . *Andrea Shorter '81*

"Life in Denmark is much more casual and peaceful than life here. The bicycles, lush countryside, the ballet, the jazz festivals, the walking streets. People are warm and embracing and the culture rich with tradition." . . . . . *Mei-lan Wong '81*

"Living in Copenhagen for the fall semester was the very best experience I had abroad. I learned more about myself than I could have imagined. Living in the student housing (Kollegium) was terrific, as I was much more exposed to my Danish peers. Becoming a part of my "block" of housing made me more aware of the Danish culture and made me very proud to belong to such a wonderful group of people who have left me forever missing Denmark and my friends." . . . . . *Kristin Stanley '88*

"Copenhagen is a great place — where else are the bars open from 9 a.m.-5 a.m.?" . . . . . *Laurie Lyon '89*

Meeting two strangers in Moscow in the Red Square, sharing 4 days together yet building a friendship to last for years . . . Participating on the Russian "black market" and having an authentic fur hat to wear in California . . . Traveling all over Europe and studying in Denmark then suddenly you realize that going back to your Danish family really is home — it's a great feeling!" . . . . . *Brock Fowler '88*

"The most memorable thing for me was my Danish host family and all the things they did for me. And, also the great opportunity to travel and see so many other countries and cultures." . . . . . *Jonh McCarthy '89*

"The people I met . . . the places I saw . . . the awesome experiences that were awaiting at the end of each train ride and that began as we stepped on . . . I love the foods, trains, languages, people, friends, and so on." . . . *Linda Bennett '89*

"The best part of it all was being able to live like a "Dane." Through my host family, I was better acclimated to the culture and the Danish people. Christian, Gitte, and Henriette (Danish family) were the best. Other unforgettable experiences are my travels to the Soviet Union, London, Monte Carlo-Monaco, Spain, Yugoslavia, Austria, and others, in that specific order. I'm definitely going back after graduation, or perhaps even sooner." . . . . . *Alex Mangosing '89*

"The most memorable part of being in Europe and studying abroad was the chance to meet different people, cultures, attitudes, and values in their natural settings. One doesn't realize how different those values and opinions are until you actually try and blend into the societies. I came away knowing more about myself, the people of Europe, and what it is to be American." . . . . . *Gorden Gates '89*





## COPENHAGENERS '87

- |                      |                      |
|----------------------|----------------------|
| Rick Ahlers '89      | Katherine Martin '89 |
| Linda Bennett '89    | Valerie Master '89   |
| Lori Buehring '89    | John McCarthy '89    |
| Danielle Diego '89   | John McGuire '89     |
| Jean Ettinger '88    | Jack Millis '89      |
| Jessica Fineberg '89 | Vanessa Mills '89    |
| Jeanne Florance '89  | John Murdy '89       |
| Brock Fowler '88     | Cherilyn Rose '89    |
| Rozanne Fratto '87   | Lisa Schneider '89   |
| Gorden Gates '89     | Brenna Schroder '88  |
| Evelyn Jensen '89    | Andrea Shorter '88   |
| Barbara Johnson '89  | Kristin Stanley '88  |
| Claudie Kiti '88     | Jennifer Webb '89    |
| Renee Klund '88      | Kimberly Whited '88  |
| Kimberly Laiblin '89 | Mei-lan Wong '89     |
| Pamela Lee '87       | Heather Yeager '89   |
| Laurie Lyon '89      | Dr. Wendy Furman —   |
| Alex Mangosing '89   | Advisor              |

- *Homecoming*
- *Pledging*
- *Luminarias*
- *Drama*
- *Mona Kai*
- *Side Saddle*
- *Spring Song*
- *Commencement*



---

---

A  
DAY  
IN  
THE  
LIFE



■ Events

■ Events

■ Events

# Homecoming Festivities

## Crowned in Glory

The homecoming festivities this year began Friday night with a bonfire and a dance following. The dance in the 'quad' area between the LRC and the science building featured two bands, one comparable to 'Oingo Boing' and the other a reggae band. Saturday there was a country western concert and barbeque before the game. To get people in the western spirit, the CI staff all wore red bandanas.

Mike Griswald purchased enough bandanas for everyone who ate in the CI that night to have one. Students were to wear the bandana either on their head or around their neck when they went through the line. The football game was against LaVerne (score 17-12 Whittier). During halftime, the homecoming court was announced.





## The 1987 Homecoming Court

Homecoming King . . . . . *Rob Keeper*  
 Homecoming Queen . . . . . *Kelly Robb*  
 Junior Prince . . . . . *Jeff Gombar*  
 Junior Princess . . . . . *Kris Muir*

Sophomore Prince . . . . . *Rick Zimmerman*  
 Sophomore Princess . . . . . *Erika Taddey*  
 Freshman Prince . . . . . *Brendan Meyer*  
 Freshman Princess . . . . . *Tamiko Marimoto*

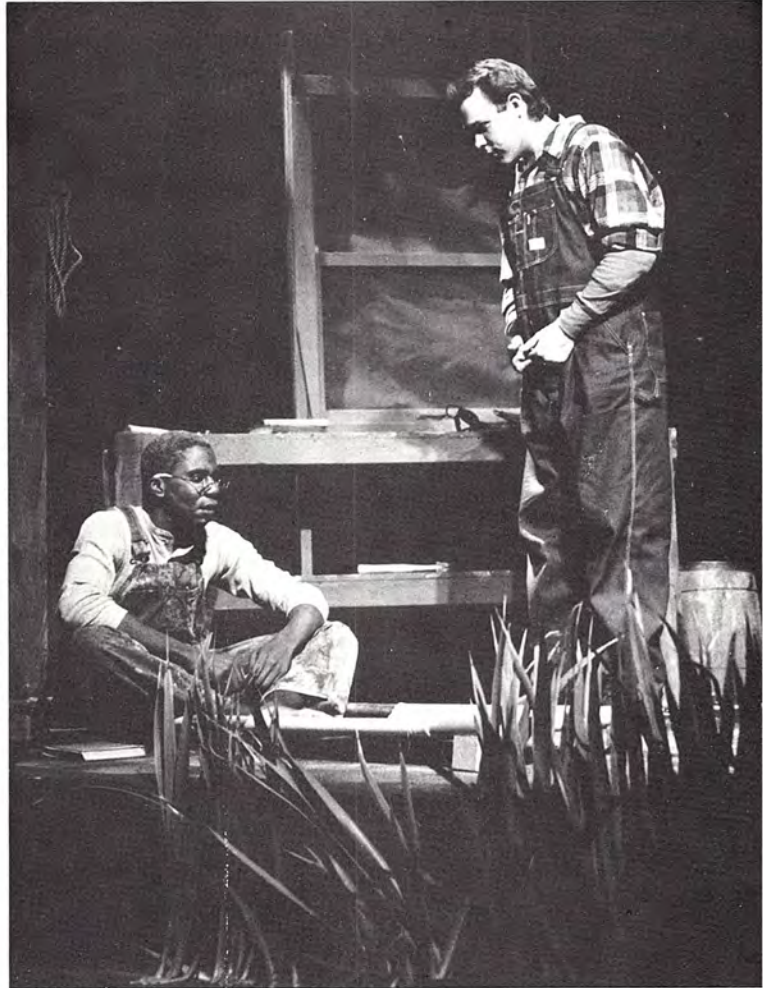
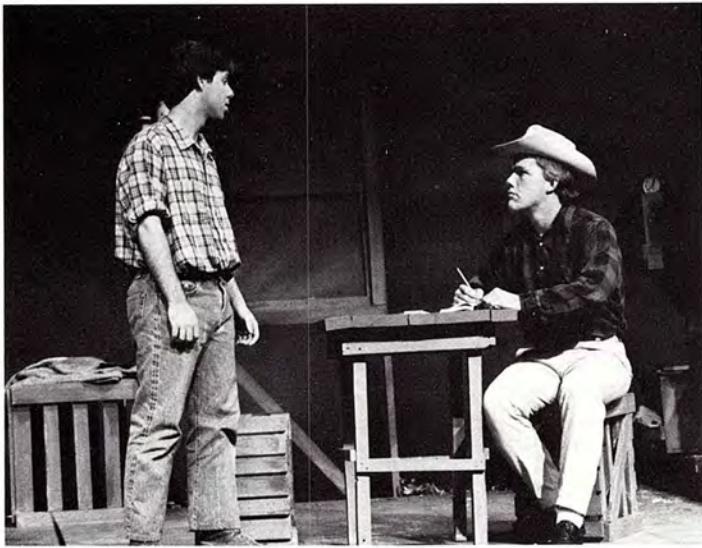
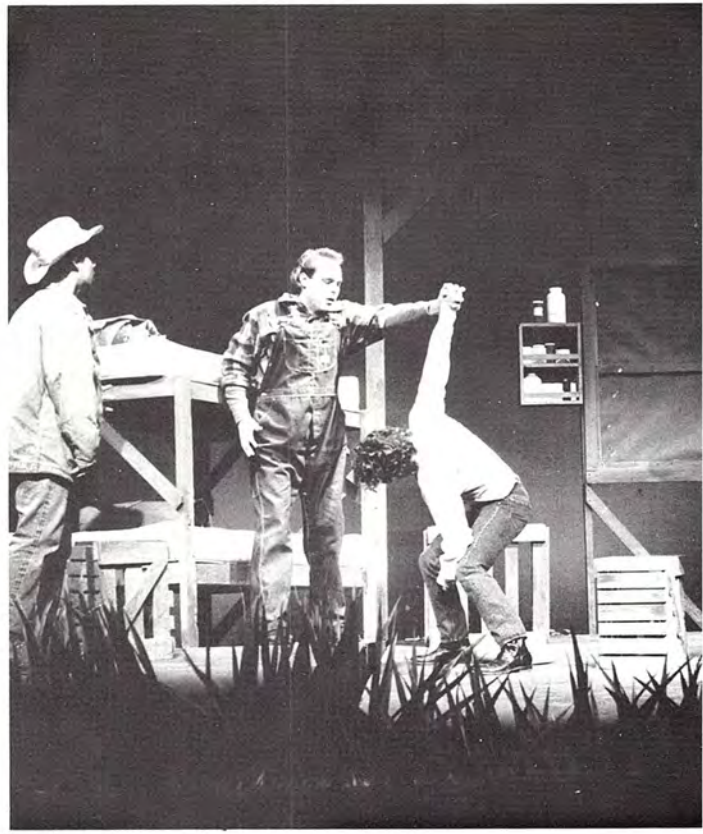


"The show must go on" — just another stage cliché. Yet this simple phrase took on new meaning during the production *Auntie Mame*. Rehearsals were in full swing when the October earthquake hit Whittier. Fortunately, the routine was not drastically disrupted. However, other problems began to crop up; the Whittier Community Center theatre had suffered extensive damage in the earthquake and the repairs would not be complete in time for the production dates. The cast and crew of *Auntie Mame* were without a stage. It was finally decided that Hoover Lautrop could be used as a theatre as a last resort. The backdrops and complicated set changes were abandoned to accommodate the smaller stage, and one extra show was performed to compensate for the lack of seating in Hoover Lautrop. Despite all of the problems, *Auntie Mame* was a success, and proved that "the show must go on" is more than just another stage cliché.

# Auntie Mame

|                                     |                    |
|-------------------------------------|--------------------|
| Norah Muldoon                       | Michelle Shipp     |
| Patrick Dennis (as a boy)           | Scott Nelson       |
| Ito                                 | Eric Faber         |
| Vera Charles                        | Karin Berry        |
| Ralph Devine                        | Kevin Marshall     |
| Radcliffe                           | Miriam Penn        |
| Daphne                              | Heather Hawkins    |
| Osbert                              | Philip Beh         |
| Osbert's Friend                     | Catie Hardeman     |
| Mr. Lindsay Woolsey                 | Michael MacCormick |
| Auntie Mame                         | Sheryn Gray        |
| Bishop Eleftharosees                | J. T. Wheeler      |
| The Bishop's Disciple               | Gina Ricardo       |
| Charles                             | Darren Blyden      |
| Edna                                | Michelle De Priest |
| Mr. Waldo                           | Christopher Best   |
| Dwight Babcock                      | Eric Bullis        |
| Al Linden                           | Darrell Nabers     |
| Mr. Unger                           | Douglas Kotkin     |
| Assistant Stage Manager             | Deana Jaramillo    |
| The French Maid                     | Lisa Selesky       |
| The Butler                          | Bill Keeth         |
| A Leading Man                       | Darren Barker      |
| Lord Dudley                         | Dan Napier         |
| An Irate Customer                   | Allyson Towersey   |
| Her Son                             | Peter Schupmann    |
| Mr. Loomis                          | Darren Barker      |
| Mrs. Jennings                       | Caitlin Guyan      |
| Beauregard Jackson Pickett Burnside | Jay Bechtol        |
| Cousin Jeff                         | Spencer Stinson    |
| His Wife                            | Desma Murphy       |
| Cousin Fan                          | Jennifer Sechrest  |
| Sally Cato MacDougal                | Dana Carr          |
| Emory MacDougal                     | Peter Schupmann    |
| Mother Burnside                     | Michelle Gilbert   |
| Uncle Moultrie                      | Michael Cable      |
| Aunt Euphemia                       | Delphi Murphy      |
| Lizzie Beaufort                     | Kathy Seymour      |
| Fred                                | Steve Lauson       |
| Sam                                 | David Ethridge     |
| A Huntsman                          | Steve Matthiason   |
| Dr. Schurr                          | Andrew Marchand    |
| Patrick Dennis (a young man)        | Mike E. Smith      |
| Agnes Gooch                         | Sindy Steinberg    |
| Brian O'Bannion                     | Larry Resick       |
| Gloria Upson                        | Jeanette McKinney  |
| Doris Upson                         | Janet Wheeler      |
| Claude Upson                        | Jim Hart           |
| Pegeen Ryan                         | Cristina N. Marx   |
| Michael Dennis                      | Scott Nelson       |







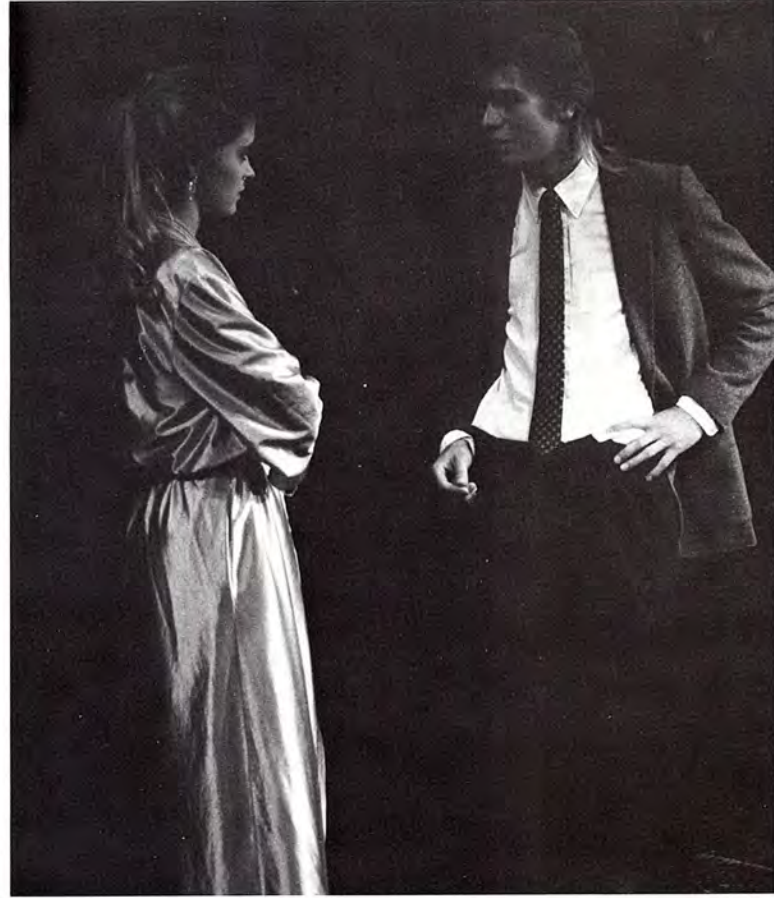
# Of Mice and Men

|                     |                   |
|---------------------|-------------------|
| Lennie .....        | John Murdy        |
| George .....        | Mike E. Smith     |
| Candy .....         | Spencer Stinson   |
| The Boss .....      | Kevin Marshall    |
| Curley .....        | Christopher Best  |
| Curley's Wife ..... | Jennifer Sechrest |
| Slim .....          | Jay Bechtol       |
| Carlson .....       | Jim Hart          |
| Whit .....          | David Ethridge    |
| Crooks .....        | Darrell Nabers    |



# Rehearsal For Murder

|                                    |                        |
|------------------------------------|------------------------|
| Alex Dennison, a playwright .....  | Eric Gothold           |
| Ernie, the stage doorman .....     | Darrell Nabers         |
| Sally Bean, Alex's secretary ..... | Gretchen Crane         |
| Monica Welles, a star .....        | Maria Pederson         |
| Loretta, the stage manager .....   | Jessica Fineberg       |
| Lloyd Andrews, the director .....  | John Murdy             |
| Bella Lamb, the producer .....     | Allyson Towersey       |
| Karen Daniels, an actress .....    | Diana Weimer           |
| David Mathews, an actor .....      | Jim Hart               |
| Leo Gibbs, an actor .....          | Charles Van Steenburgh |
| Male Police Officer .....          | Ed Rosecrans           |
| Female Police Officer .....        | Betty Hart             |
| Man in Auditorium .....            | John McCarthy          |
| Mr. Santoro .....                  | Kevin Marshall         |
| Second Man in Auditorium .....     | Jay Bechtol            |







# Pledging





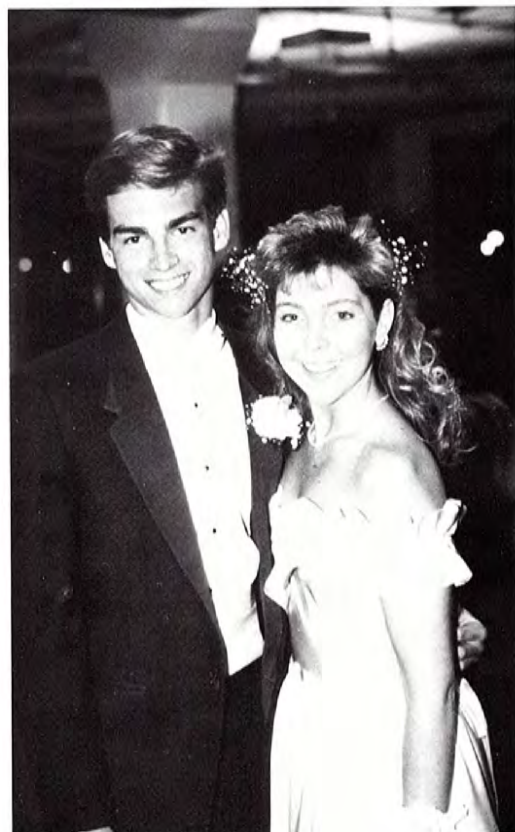
Pledging season takes place during the January interim every year. One will frequently see the pledges to each society running about, painting the rock, wearing uniforms ranging from blue skirts to varsity jackets and carrying around what are known as 'pledge books.' The faces of the pledges often express frustration, anxiety, and fatigue as carry out their activities. yet one can see, as they stick together, the special secret bonding that is formed by their common situation and is shared only by them.

# Pledging





# Luminarias









# Private Parties

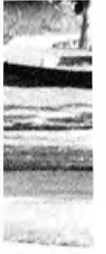
Parties play a major role in college life. Whittier College, with its club opens, bar nights, FACU, and society stags, is no exception. However, believe it or not, some weekends are devoid of such pastimes. Left to their own resources, students plan private parties, ranging in size from five or six people hanging out in a dorm room to twenty or more in someone's house. And, contrary to popular belief, students do more than just drink at these parties. Now is the time to dig out Trivial Pursuit or Scruples, start a game of Limbo, or even dance on the furniture. Of course, there is also plenty of eating; after a week of C.I. food, even chips and dip taste delicious. Once the party is over and everyone falls asleep, the mess remains. However, the 'after-party debris' is a great way to procrastinate.



# AIDS AWARENESS WEEK

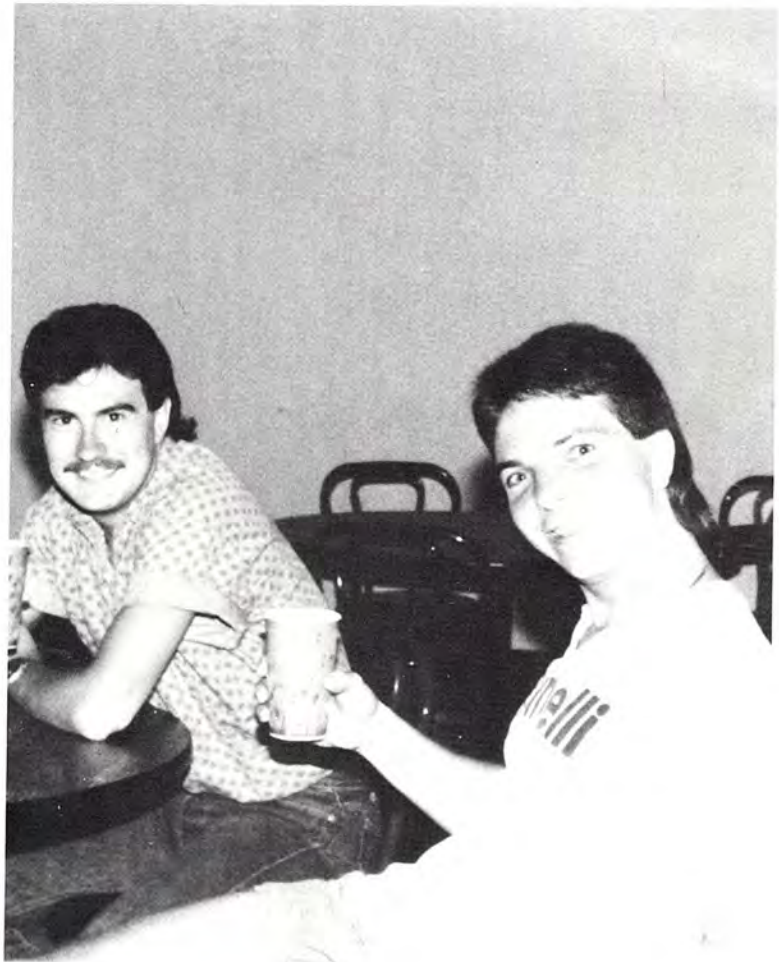
During the spring semester at Whittier, the campus took part in a week-long AIDS awareness program. The purpose of this was to recognize the growing threat of the Acquired Immune Deficiency Syndrome, which produces a lethal effect on the body's natural immunity system. Throughout the course of the week, facts were communicated to correct expanding myths, to present the mental and physical aspects of the victims of this illness, and to increase student awareness of the precautions necessary for safe sex and the prevention of AIDS. Activities during the "Olympiads" included a water-filled condom toss, a race testing the dexterity of the opponents in placing a condom on various fruits and vegetables and a condom-breaking contest. Condom grams were also sent to remind friends to practice safe sex.

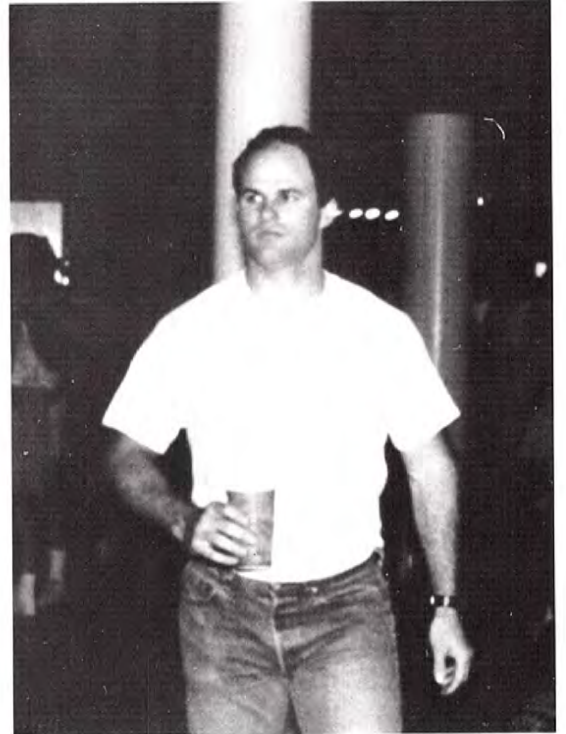
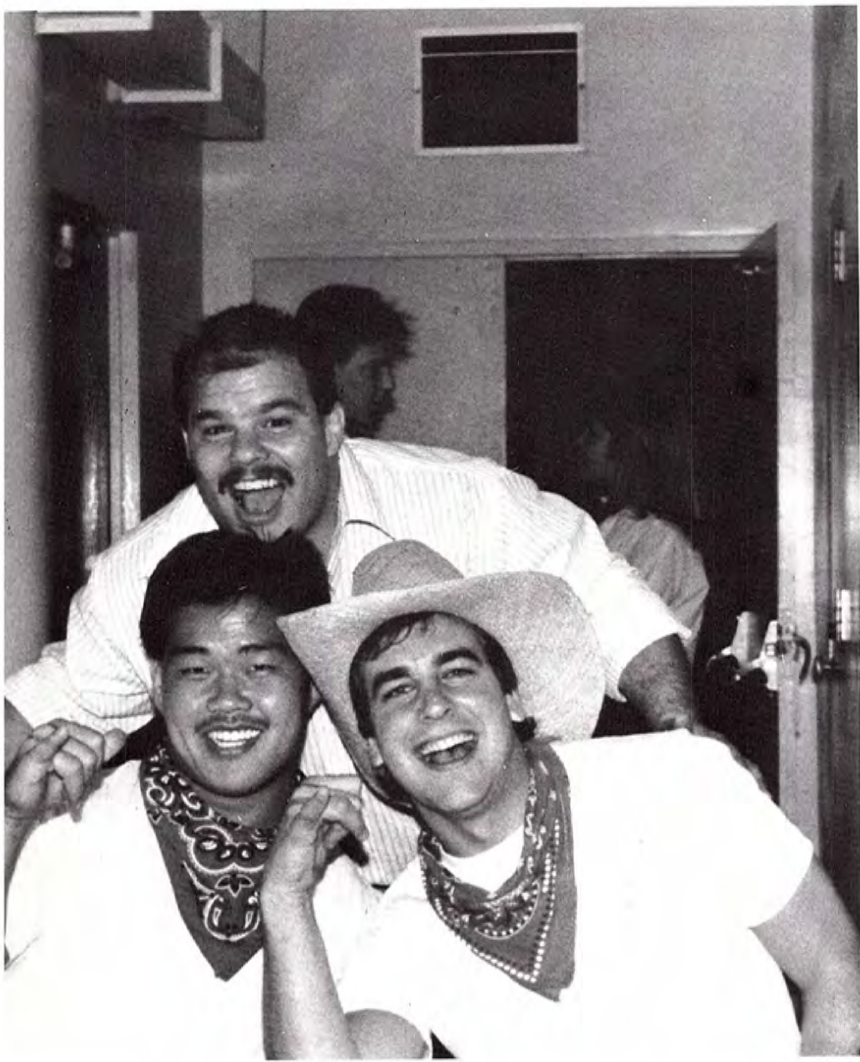




# Sidesaddle

Sidesaddle is the annual Club Open sponsored by the Orthogonian Society. So pull on your boots, plunk your cowboy hat on your head, and hop on the hayride down to the Club for a night of dancing, arm-wrestling, and chug-a-lugging. This year, the event got off to a rousing start when the hayride was pulled over by the local police en route to the Franklin house. Fortunately (we hope), the officer was a bit overwhelmed by the masses of people and did not cite the driver. The hayride then continued — at a rather sedate pace — to the club, where the remainder of the evening was a success.







# Mona Kai

“What was rated by ‘Playboy’ magazine as one of the top ten campus events in the country in 1966?” If you guessed Mona Kai, you are right. If not, well, Oxy does take transfer students

...

Mona Kai, the annual tropical festival sponsored by the Lancer Society, is held each spring. The week before the event, the days are filled lounging by the Mona Kai hut and the nights with parties with each of the women’s societies. Finally, on the day of Mona Kai, sand is hauled by the ton to a parking garage near the campus, along with palm fronds and bamboo, to create an island atmosphere. The festivities begin at 8:00 with a live band and dancing, and continue into the early morning hours.



# Asian Night '88



This annual production sponsored by the Asian Students Association (formerly Oriental Student Union) has been a treat to faculty, students, and guests for six years. The seventh year was no exception. The festivities started off with a fashion show displaying costumes of native countries. Next was the dinner, which featured a fine mix of well-known Asian dishes and a few not-so-famous; all were delicious. The remainder of the program, based upon Marco Polo's travels, featured folk dances, instrumental performances, and even a game. Truly a night of fine culture and entertainment.



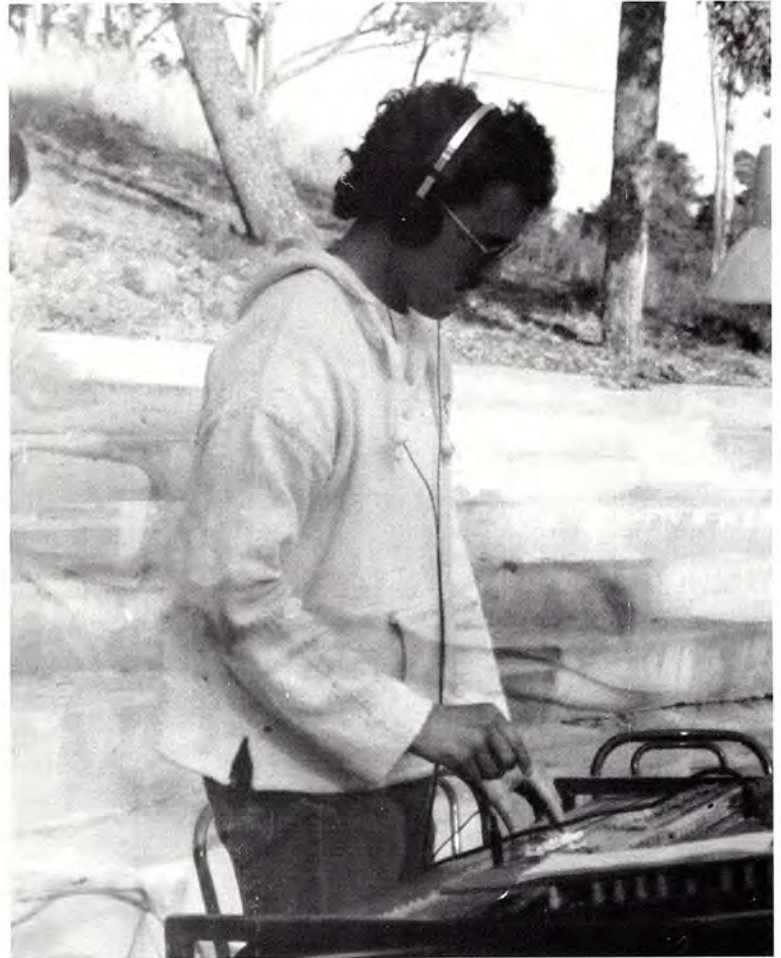




# Spring Sing 1988

## Ringside Whittier

Despite bone-chilling winds, students packed the seats of Harris Amphitheatre to see Spring Sing, the annual talent show at Whittier. It was a night to remember, with acts ranging from "Heard It Through The Grapevine" by the Orthogonian Society to Joel Whisler's rendition of "Candle In The Wind;" which was greeted with a standing ovation and shouts for an encore. Karen Ritter, this year's director, not only coordinated one of the best Spring Sing shows ever, but also presented one of the shortest. The running time was a little over two hours, even with a guest appearance of the Whittier College Barber shop Quartet. After the winners were announced, Joel Whisler satisfied the demands for an encore by performing "Piano Man."

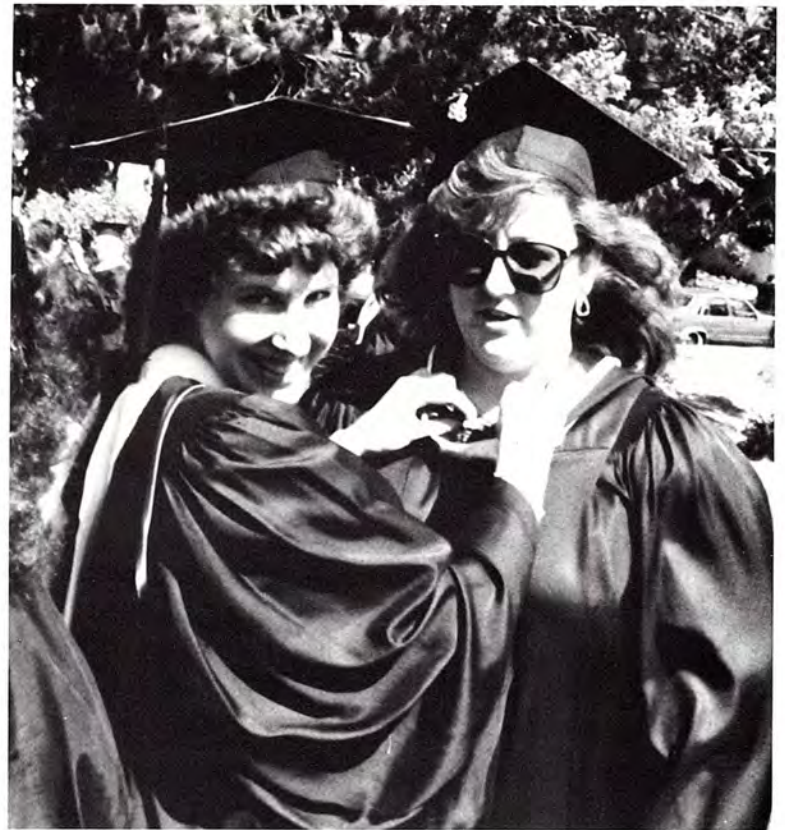






The winners of this year's Spring Sing are as follows: Julie Nilsen with "Didn't We Almost Have it All" (solo choral), Charlotte Michel with "Far From Over" (solo choreography), Charles & Judy with "America" (duet choral), The USO Sisters with "Boogie Woogie Bugle Boy" (small group choral), Bobby & Heather with "I Could Never Say Goodbye" (small band), Senioritis with "When I Think Of You" (small group choreography), The Franklin Society & Ben's Beaters with "Rock & Roll All Night" and "Dictdads and Narpits" (large group choral), The Athenian Society with "Consider Yourself" (large group choreography), The Orthogonian Society with "Heard It Through The Grapevine" (most creative), AOKP with "Send In The Clowns/Buzz, Buzz, Buzz" (theme), and, of course, Joel Whisler with "Candle In the Wind" (sweepstakes).





# Commencement

Sunday, May 29, 1988 4:00. You give your cap one last adjustment, check your reflection one last time, and head down to the Library lawn. The cluster of students around the telephone pole are checking their numbers in line while everybody is running around with cameras, flowers, and balloons. "Finally," you think, "I'm graduating." It still seems hard to believe. 4:15. Everybody gets in line on their proper number and wait while the registrar takes role to make certain everybody is present. It seems somewhat childish, but nothing can dampen your high spirits today. Now the waiting begins. 4:45. Finally, the signal is given and it is time to begin the procession across the campus to Harris Amphitheatre for the ceremonies.



5:00. As you file into the Amphitheatre stage and take your seat, you look up and see the crowds. Once everyone is in place, the commencement of the Class of 1988 begins. After numerous speeches, President Mills begins the most important segment — conferring degrees. Once this has been completed, you are officially an alumni. Congratulations, graduates!







■ *Seniors*

■ *Seniors*

■ *Seniors*

■ *Seniors*

■ *Seniors*

■ *Seniors*

---

A  
DAY  
IN  
THE  
LIFE



■ *Seniors*

■ *Seniors*

■ *Seniors*



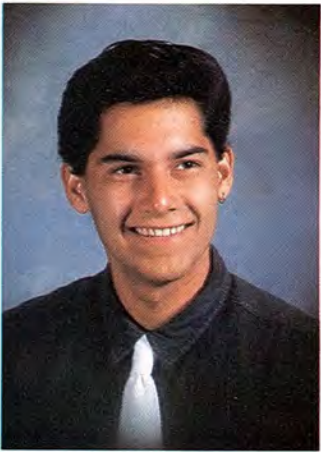
*Grace AbuJamra*



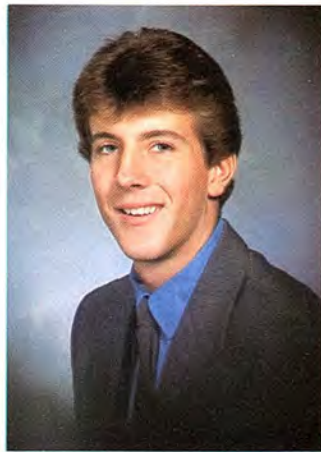
*Paul Albertini*



*Robin Algozaibi*



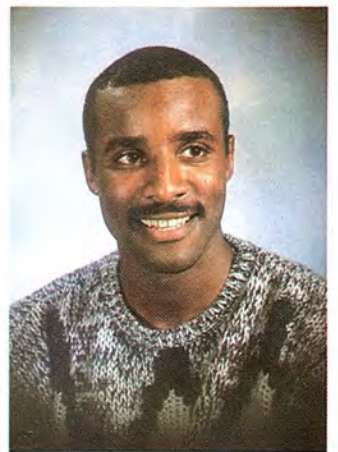
*Anthony Almeida*



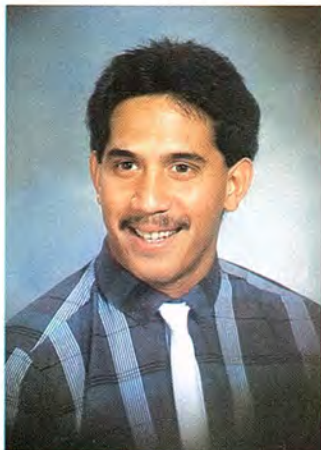
*John Ashby*



*Carole Azuma*



*Jay Bailey*



*Robert Bajet*



*Debra Baverman*



*Cindy Berk*



*Karin Berry*



*Corinne Bineau*



*Keith Black*



*Brian Boyer*



*Beth Brownell*



*Kevin Burke*



*Lisa Burnett*



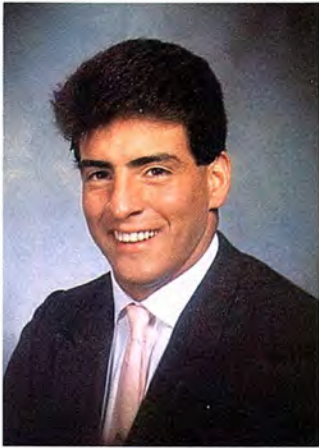
*Todd Bursaw*



*Ji-Hyun Byun*



*Cynthia Carrell*



*George Casillas*



*Cheryl Cervantes*



*Michelle Cervantes*



*Fiona Chan*



*Renée Clayton*



*Patricia Cooney*



*Anne Cople*



*Ann Cortez*

---

After four years of hard work — and some fun as well — the class of 1988 is ready to graduate and enter the 'real world.' Some will continue their education, while others will commence with their chosen careers soon after graduation. Congratulations and good luck.



*Deborah Crean*



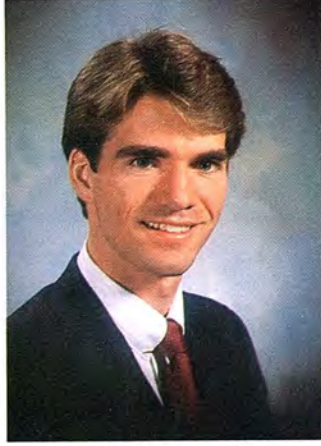
*Valerie Cripps*



*John Cunningham II*



*Nina D'Anna*



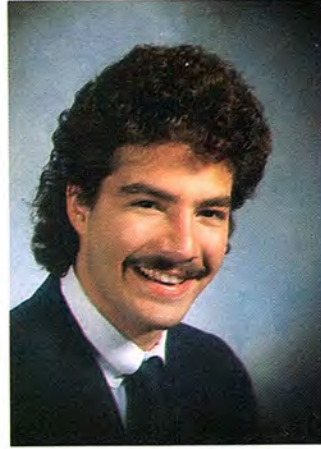
*Neal Dalrymple*



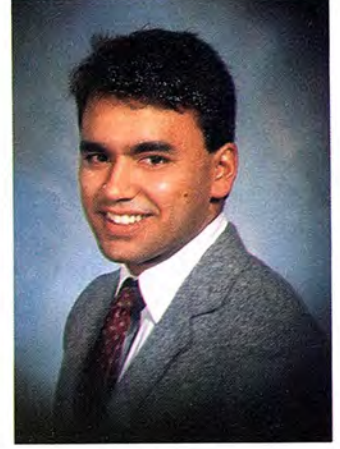
*Joyce Davidson*



*Marnie Day*



*David DeGumbia*



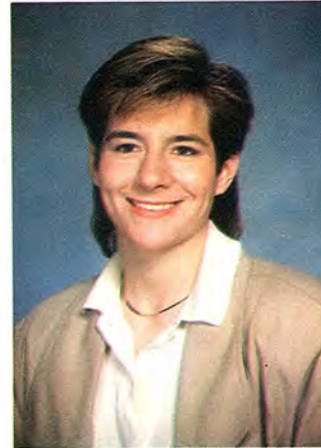
*Tony DeSa*



*Lisa Diaz*



*Michael Diaz*



*Adrienne Diercks*



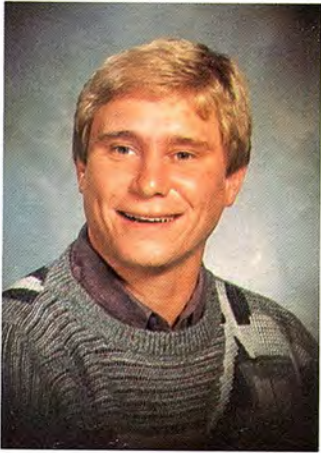
*Celeste Fry*



*Angelica Garcia*



*Rita Gee*



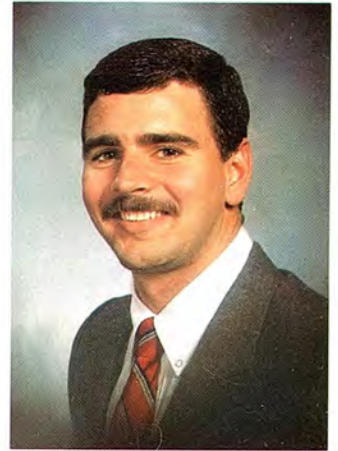
*Curt Gobar*



*Rosana Gomez*



*Sylvia Gortz*



*Brian Gray*



*Carrie Guillen*



*Richard Hall*

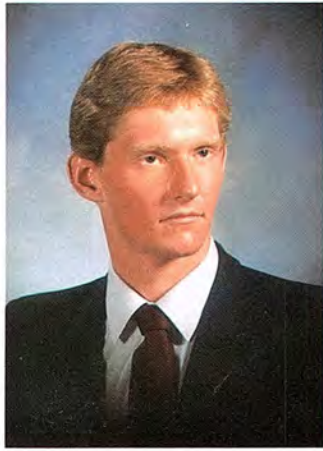


*Melissa Hallen*





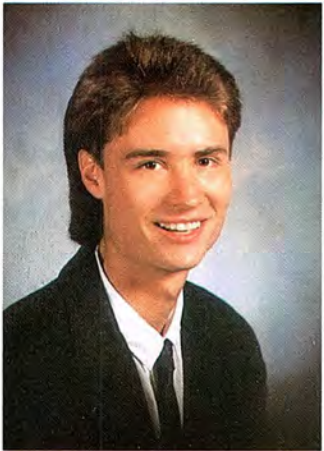
*Damon Dragos*



*Jonathan Edge*



*James Ettinger*



*Adam Eyres*



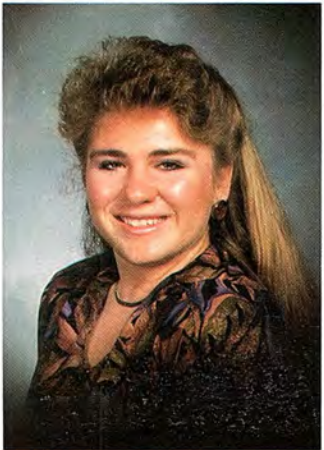
*Dean Farano*



*Trever Esko*



*Jeanette Evanich*



*Beth Fitzpatrick*



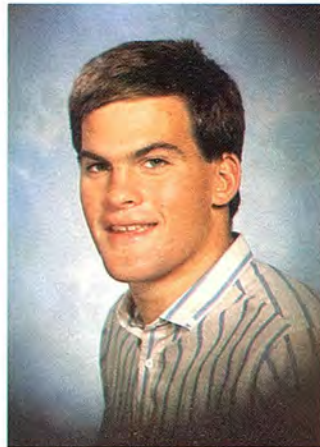
*Brock Fowler*



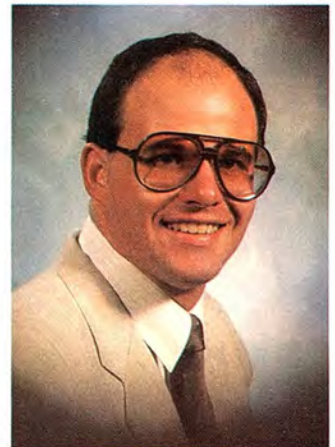
*Holly Frank*



*Frank Haun*



*Damon Hess*



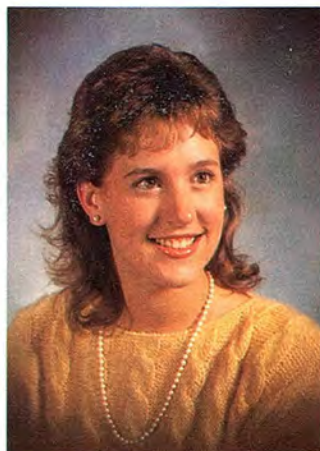
*Gerald Hier*



*Hai Ho*



*John Hodroff*



*Kelli Hokanson*



*Kimberly Horning*



*Laura Hoyt*



*Colin Hunter*



*Toshiki Iwase*



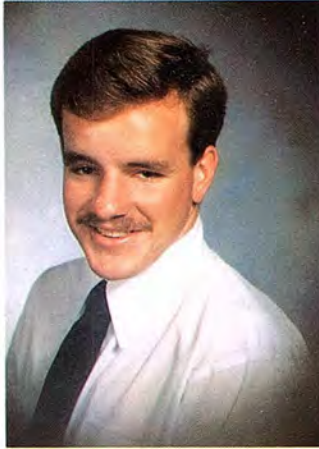
*Sarah Jamison*



*Michelle Jaramillo*



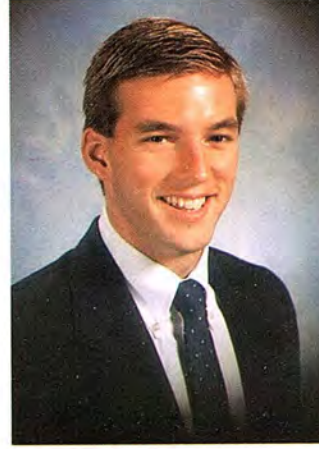
*David Jefferson*



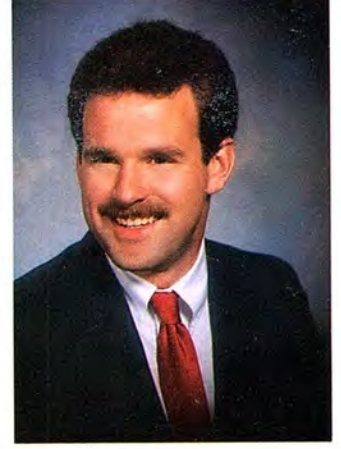
*William Keeth*



*Renee Klund*



*Kevin Lacey*



*Scott Lance*



*Erika Layton*



*Jessica Layton*



*Alice Leary*



*Kwan Lee*



*Tiong-Huai Lim*



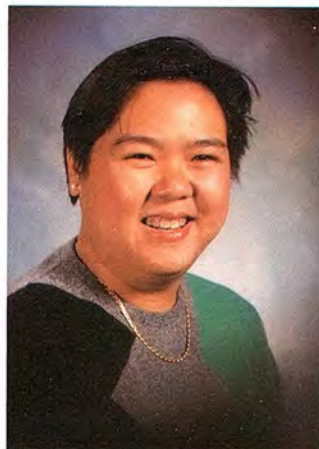
*Maria Lovato*



*Megan Lunstrum*



*Simone Luyt*



*Elizabeth Ma*



*Anthony MaCallister*



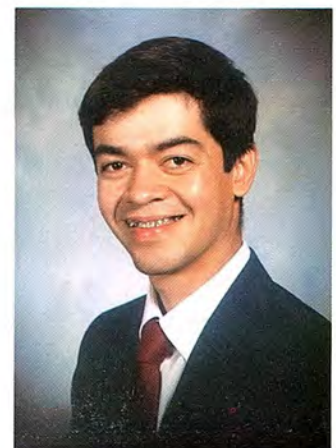
*Clare Macaulay*

---

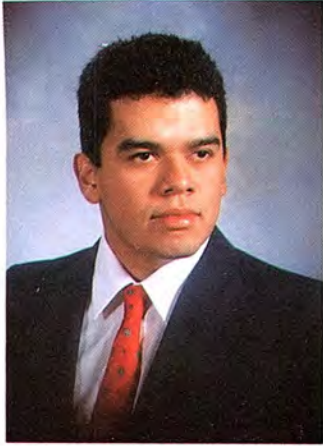
*"The end of labor is to gain leisure."  
— Aristotle*



*Sandra Mah*



*Anthony Martinez*



*Jorge Martinez*



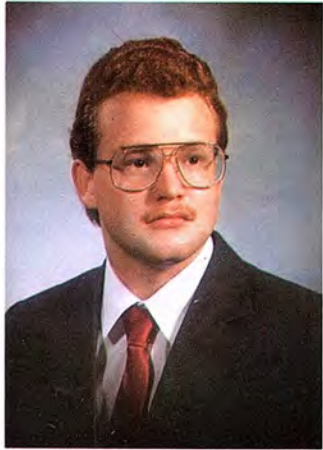
*Maria Martinez*



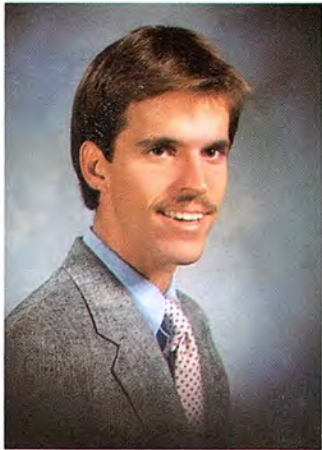
*Christina Marx*



*Paige Matsumoto*



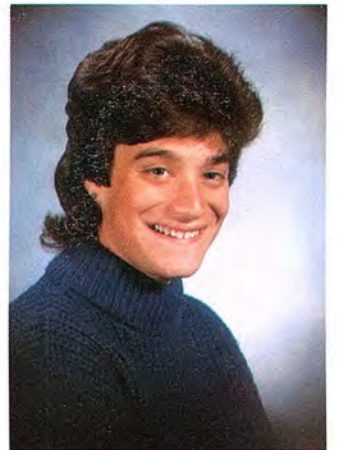
*Mark McClure*



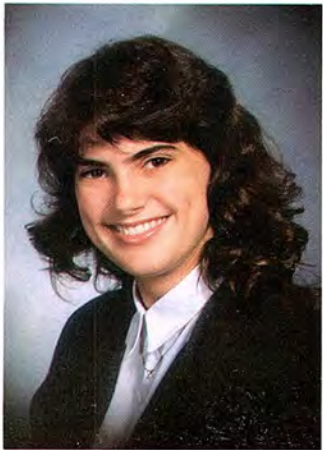
*Pete McGarry*



*Elma Mendia*



*Leda Mintzer*



*Anne Mitchell*



*Pedro Morales*



*Wendy Morimoto*



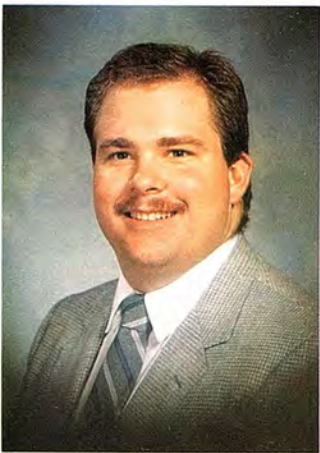
*Yuko Numano*



*Cristina Obregon*



*Melissa Oliver*



*Robert Olsabeck*



*Jill-Alexia Orr*



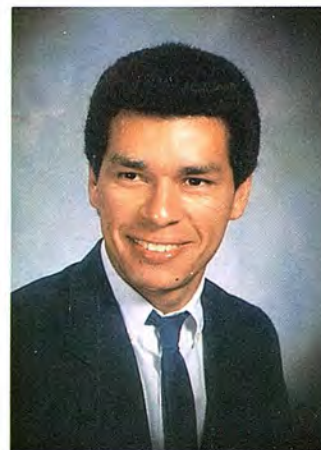
*Shelli Oye*



*Tina Pai*



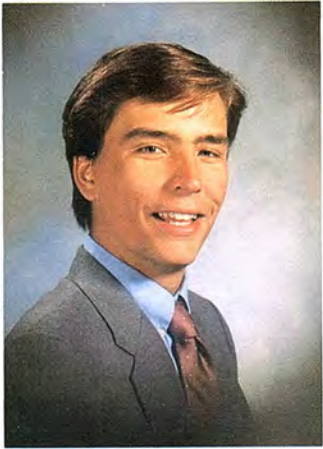
*Tina Palombo*



*Marino Parada*



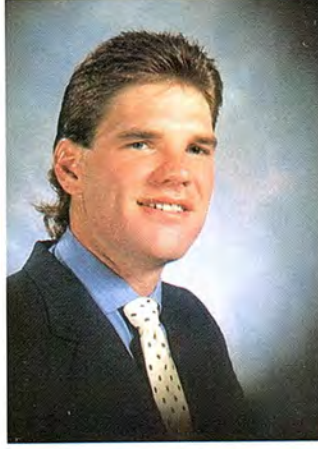
*Kerri Payne*



*John Pehrson*



*Marivic Perez*



*James Pursell*



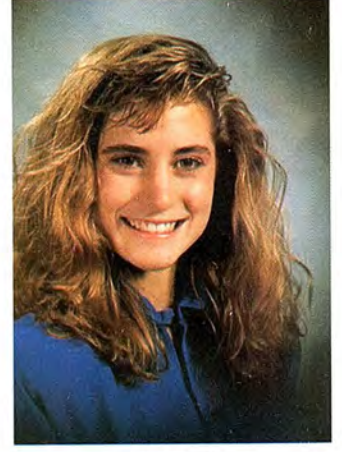
*Laura Rivas*



*Kelly Robb*



*Diane Roberts*



*Leisa Roby*



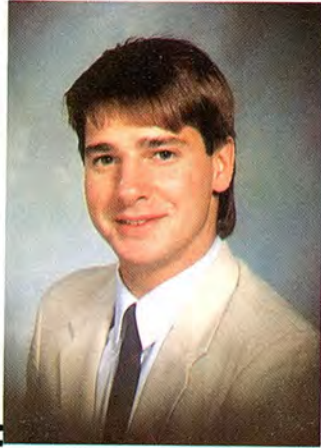
*Julie Rytand*



*Hatsue Sano*



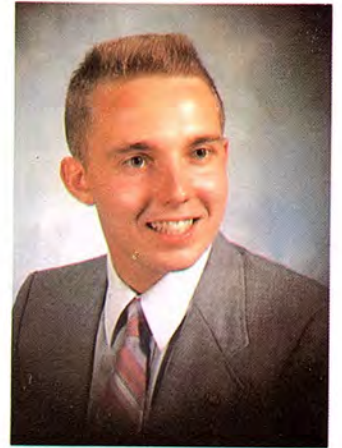
*Ramon Santos*



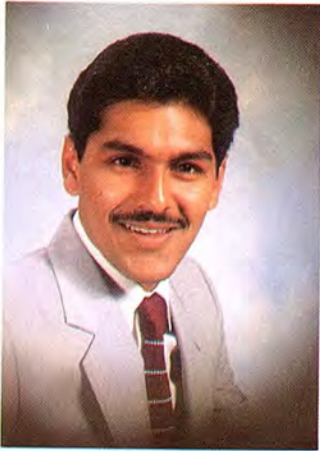
*Steven Sather*



*Rose Scott*



*Mark Sell*



*Bobby Shah*



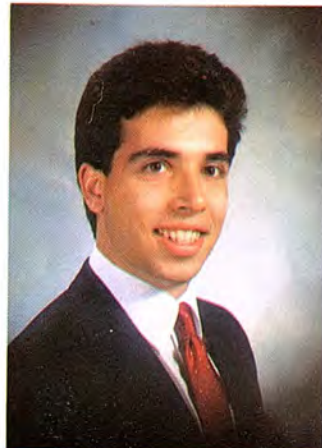
*Anne Shupek*



*Chung Sim*



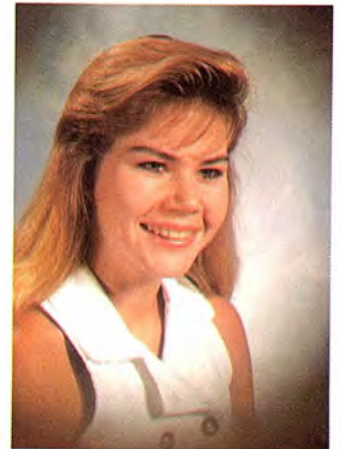
*Sheri Solomon*



*Michael Speck*



*Tracy Stelle*

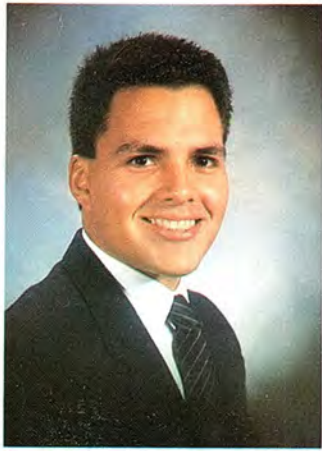


*Denise Stevenson*





*Michelle Svihovec*



*Ron Sykes*



*Renee Tagawa*



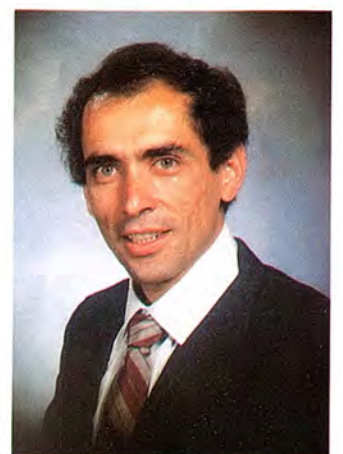
*Jennifer Toohey*



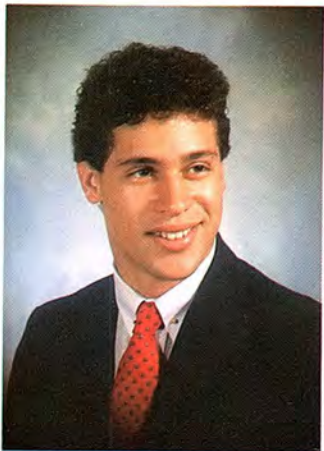
*Amy Trenkle*



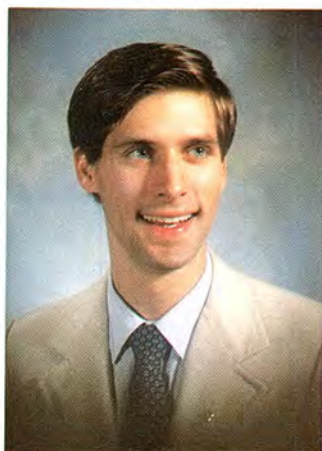
*Michael Tusken*



*Oscar Valencia*



*Brandon Valvo*



*Emmanuel Vitrac*



*Alan Waconda*



*James Waltman*



*Jennifer Weed*



*Joel Whisler*



*Jason Wilson*



*Sandra Wobig*



*Karen Wright*



*Aurora Zamora*



*Sharon Zeman*

# Seniors Not Pictured:

Jennifer Berkley  
Roger Brake  
Brackett Clark  
Randall Davidson  
Denise Diaz  
Jeff Donlevy  
Stephen Dow  
Raeda Ensheiwat  
Karen Foss  
Laura Garcia  
Dino Goden  
Stephen Hendry  
James Hoag  
Jeong Hong  
Shigemitsu Hosogane  
Jean Howe  
Rodney Jaeger  
David Johnson  
Corrie Kaspardlov  
Robert Keeper  
Donna Kilpatrick  
Douglas Kramer  
Karl Krenz  
Mark Littrell  
Carolyn Marks  
Lisa Martinek  
Fernando Misquez

Chulchi Moon  
Denis Ng  
Melina Peace  
Teresa Phelps  
Daralyn Plishka  
Ron Proul  
Nora Rivera  
Fred Sanchez  
Brian Sanford  
Geraldine Shepherd  
Michelle Shipp  
Andrea Shorter  
Susan Sinfield  
Kathleen Solie  
Kristen Stanley  
Dai Tran  
Odessa Truvillion  
Jonathan Tucker  
Friday Valentine  
Sharon Valentine  
Araceli Villalobos  
Scott Walston  
Kimberly Whited  
Lois Wimberly  
Betty Wong  
Pamela Wong  
Kazutaka Yamada

- *Campus Life*
- *Underclass*
- *Juniors*
- *Sophomores*
- *Freshmen*
- *Dorm Life*
- *Academic Life*
- *Campus Life*

---

---

A  
DAY  
IN  
THE  
LIFE



■ *Campus*  
*Life*

■ *Campus*  
*Life*

■ *Campus*  
*Life*

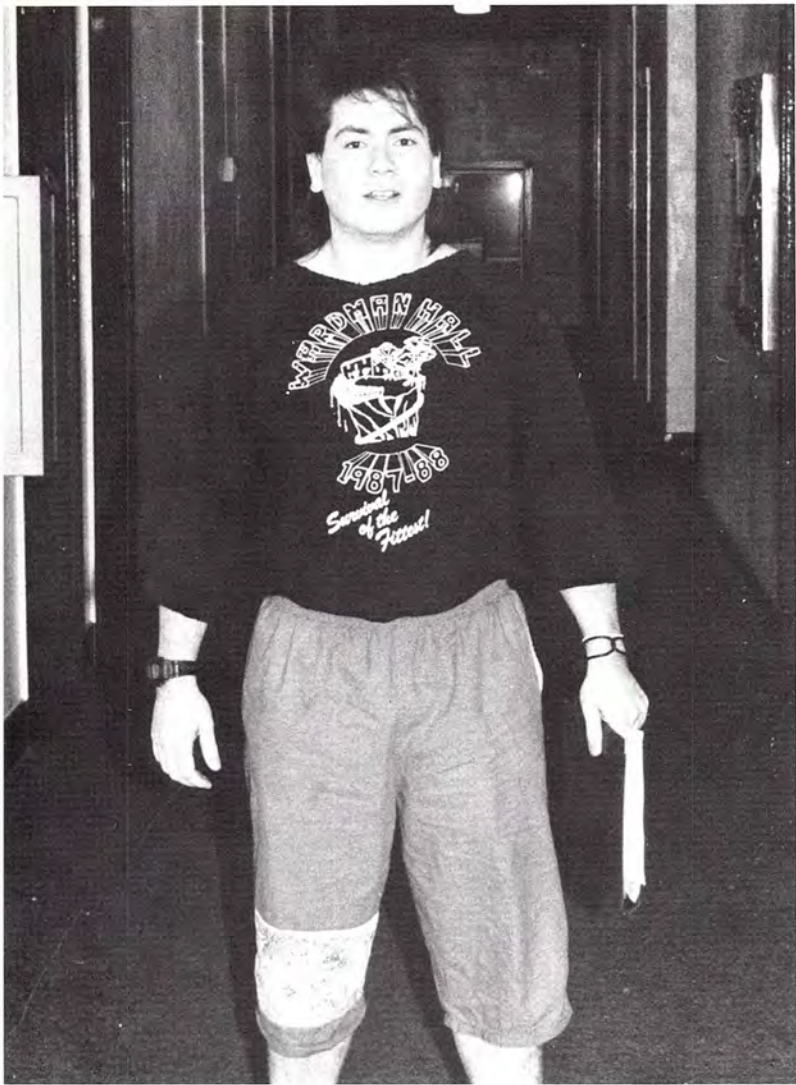


## Whittier College Extends a Helping Hand to Underclass

Do you remember the day of yesteryear? When you could hear the cries of "freshmen" echoing throughout your old high school hallways. To be called a freshman and made the butt of everyone's jokes was a common occurrence in high school, but at Whittier College it is not that common. Underclass life at Whittier College is generally not that bad.

The professors, staff and student body are friendly and helpful and campus life is basically open. You can always find someone to talk to and it is quite easy to make new friends. And this is the type of atmosphere that the Whittier College Administration tries to create.





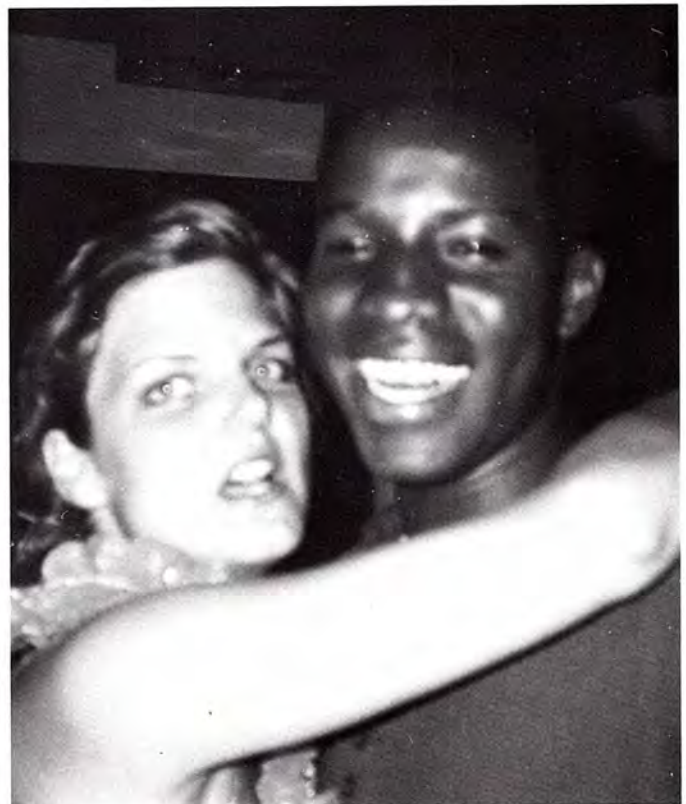






## Underclass Takes Time Out for Fun and Games

Whittier College also offers many activities to keep a freshman occupied. The residence halls contain pool tables, ping pong tables, television and activities that are coordinated by the Hall Council. The Student Union also offers many recreational activities which include a large screen television and video games. On hot days one can usually find many people lounging around the pool, relaxing, trying to get the ultimate "Whittier" tan. At night one can attend society sponsored parties or club openings. Underclass life at Whittier College is enjoyable and can be a unique learning experience (especially when one is waiting in line to register).

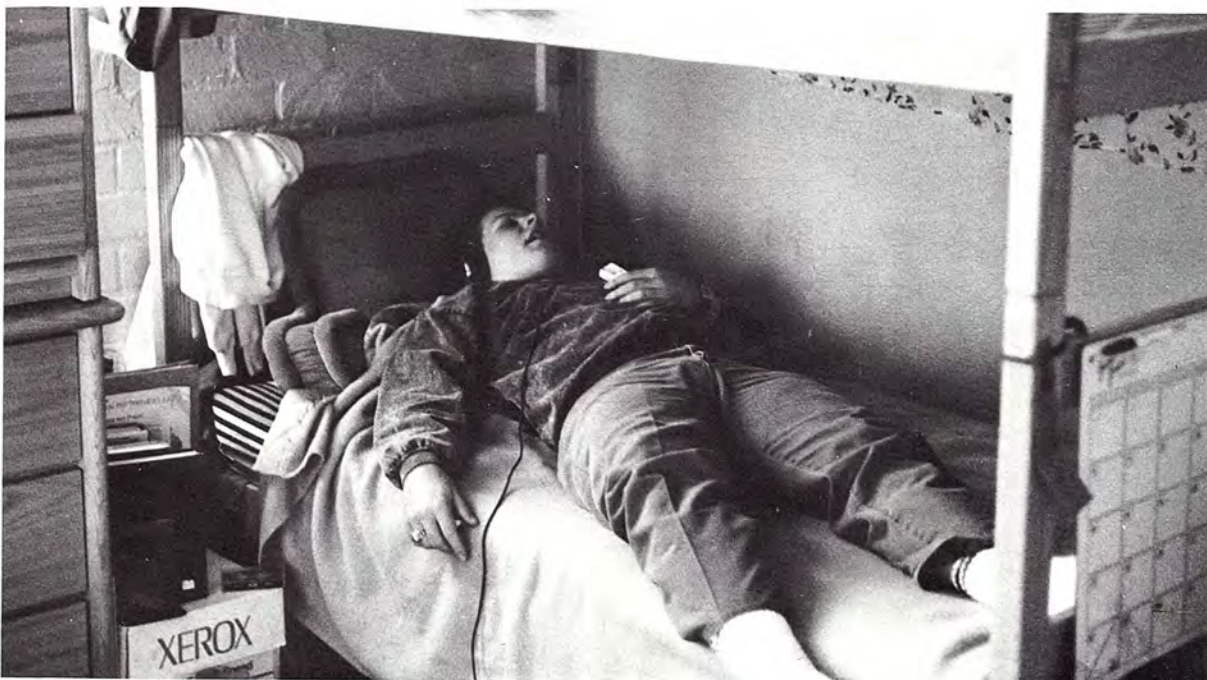
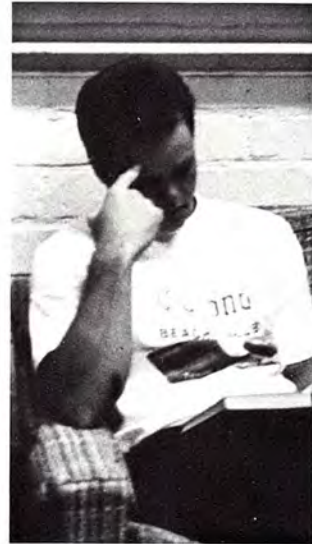
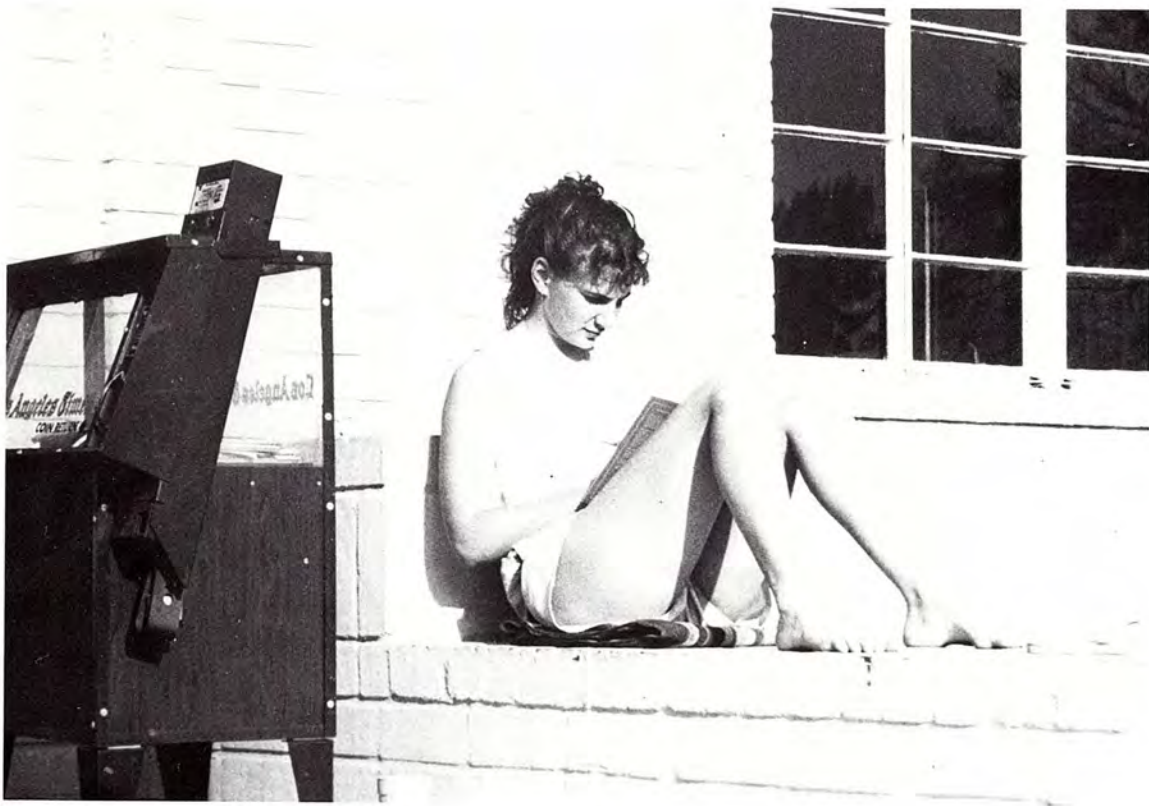






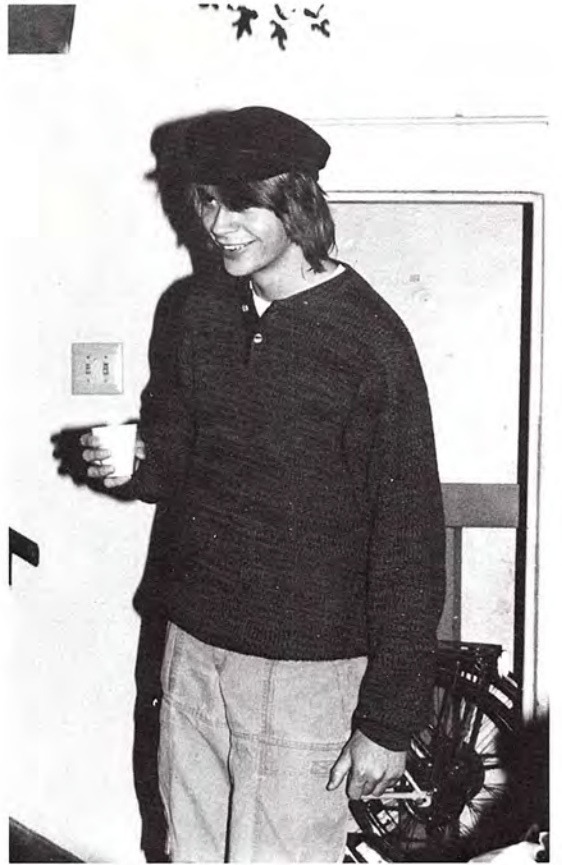
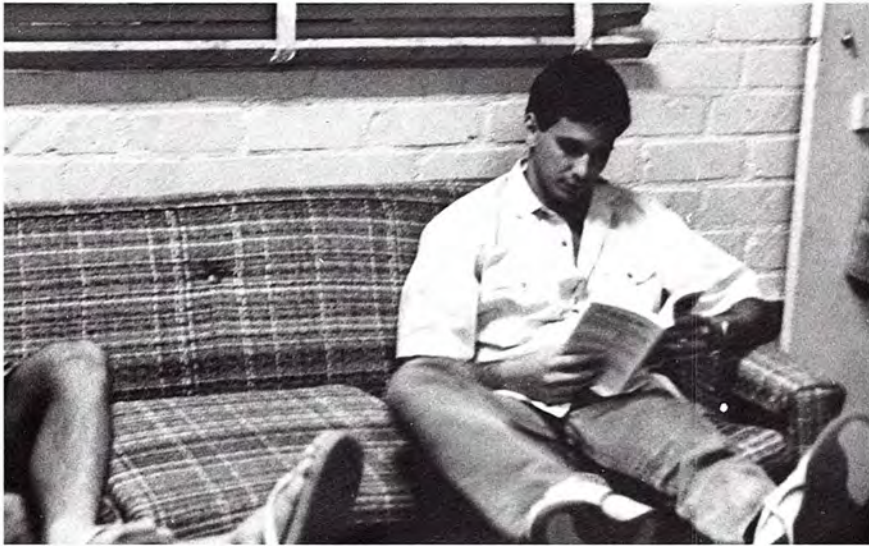
# Residence

or Life in



# Halls

a Shoebox

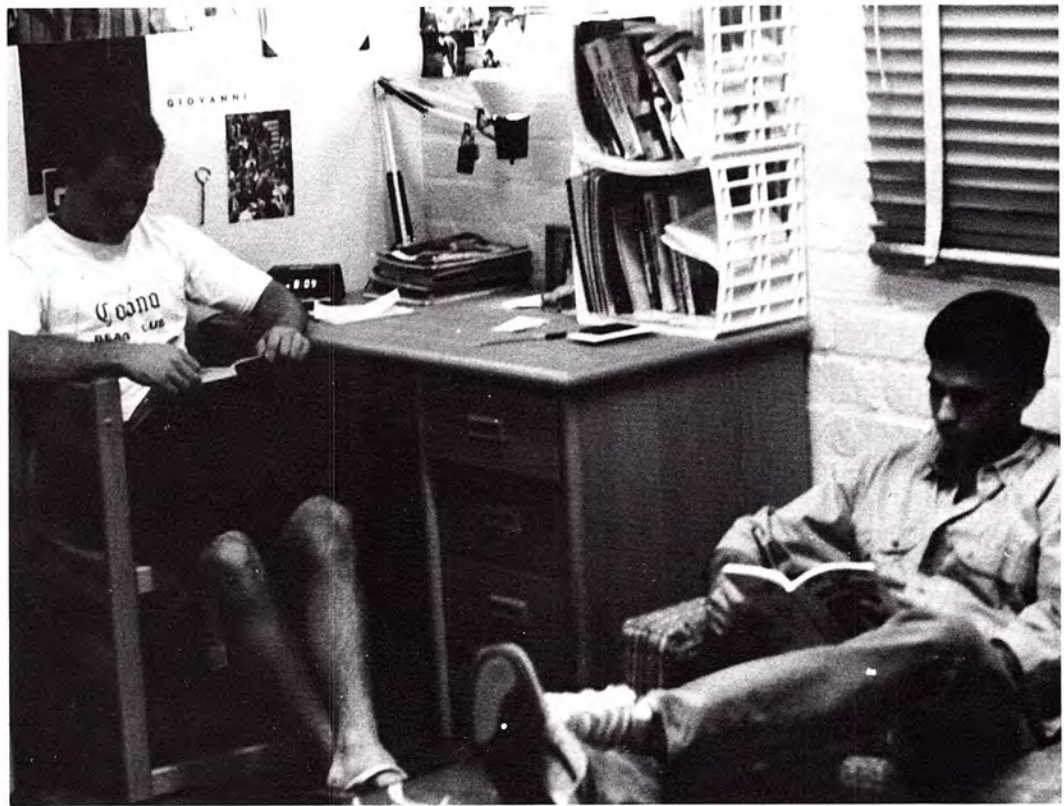
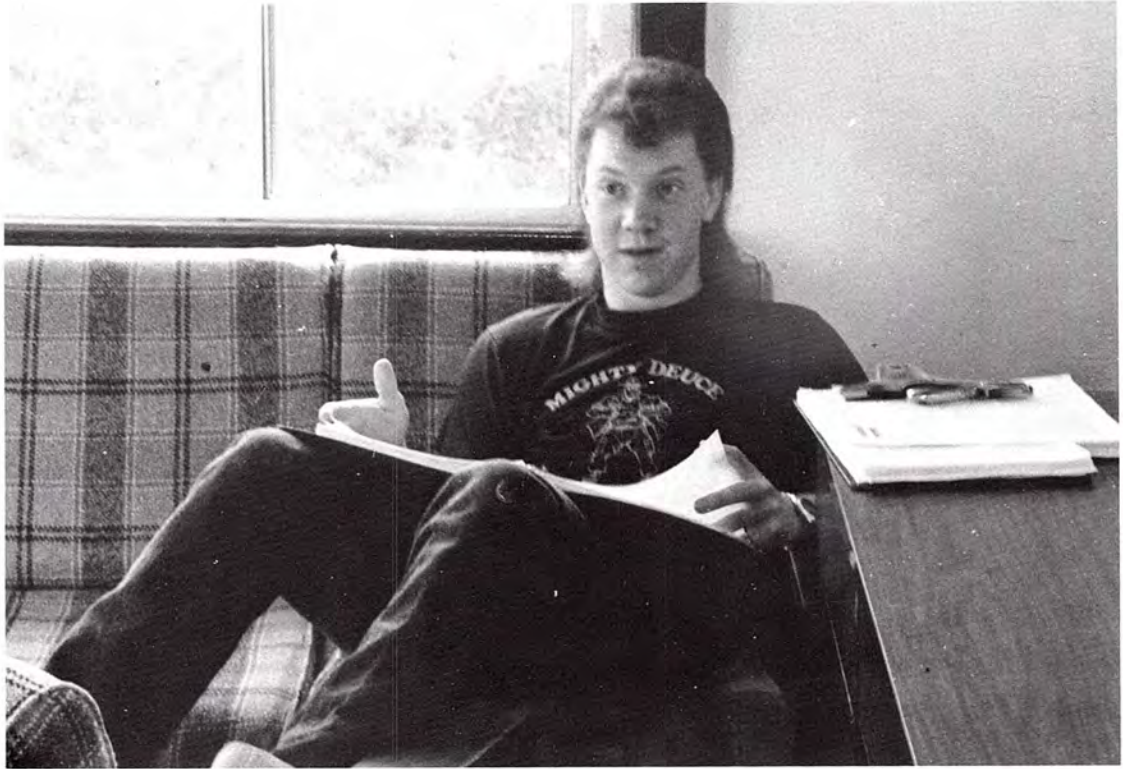


# ACADEMIC LIFE



The day of a student is an academic one. The professors are good and they expect much of their students. The students have majors ranging from theater of arts to chemistry. Whether students are under the Liberal Arts Program or under the Whittier Scholars Program, they leave Whittier with a well rounded education.

There are basically two types of students. The first type is the student that studies every day, asks the professor questions and is always prepared by studying for exams and writing papers way in advance. Then there is the second type of student, the procrastinator. This is the student that plays frisbee on the green or goes surfing at the beach every day thinking that there is plenty of time before the paper or test is due. Eventually, the night before the test or paper is due has arrived and the adrenalin begins to flow as the paranoid student O.D.'s on sugar, and coffee to stay up all night to complete an assignment that was supposed to take weeks to complete. However, one way or another the papers are written and the exams are taken, and the life of a student continues . . .



■ *Faculty*

■ *Staff*

■ *Administration*

■ *Faculty*

■ *Staff*

■ *Administration*

■ *Faculty*

■ *Staff*



---

---

# A DAY IN THE LIFE



■ *F*aculty

■ *S*taff

■ *A*dministration

# DAY IN THE LIFE OF A PROFESSOR

A day and life of a Professor on Whittier Campus is not an easy one. A professor must keep alert in a classroom full of sleepy students. He tries to keep the subject interesting enough to draw the attention of sleepy students. Looking over the class he realizes that he is far from being successful for some students are yawning, some are staring at the ceiling and there is always one who is sound asleep.

Yet the professor continues as if he is teaching the most interesting subject in the world.



Charles Adams, English



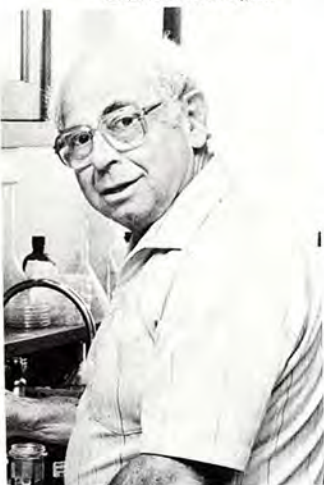
Gerald Adams, Chemistry



Scott Alden, Business Administration



Kenneth Apel, Communication Disorders



John Arcadi, Biology



Richard Archer, Whittier Scholars



Darold Beckman, Education



Maureen Behrens, Psychology



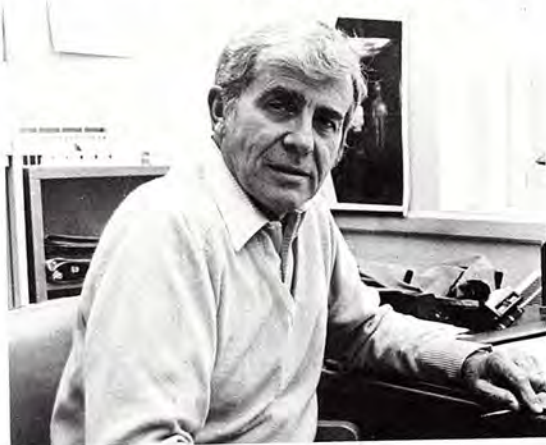
Priscilla Bell, Chemistry



Fred Bergerson, Political Science



Charles Browning, Sociology



Donald Brees, History



Sherry Calvert, P.E. & Recreation



Irene Carlyle, Communication Disorders

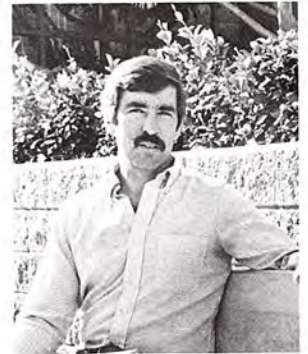


Rafael Chabran, Foreign Language

Picture  
Not  
Available



Kathleen Cordes, P.E. & Recreation



Mike Davis, P.E. & Recreation

Judith Cook, Art



Jack deVries, Drama



John Dean, Education

Picture  
Not  
Available

Frank Duncan, Physics

Picture  
Not  
Available



Theima Eaton, Social Work

James Dwyer, Philosophy

Picture  
Not  
Available

Anne Eggbroten, English



Monica Espinosa, English



Joseph Fairbanks, History



Ann Farmer, English



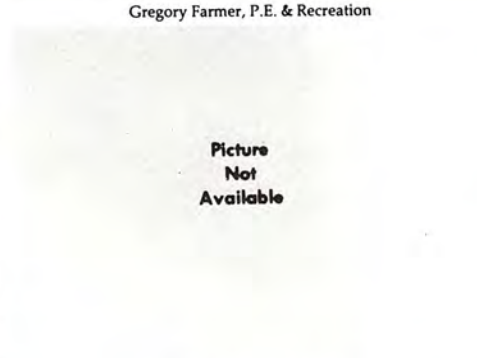
Picture  
Not  
Available



Abi Fattahi, Mathematics



Horacio Ferriz, Geology



Picture  
Not  
Available

Gregory Farmer, P.E. & Recreation



Wendy Furman, English



Donald Gaymon, Business Administration



David Garland, Mathematics



Mary Finan, Business Administration



As the day continues the students become more awake. And, as the students become more awake they begin to ask more questions; especially, the class right before lunch. The professor might find himself staying after class and right through lunch to answer the question of a confused student.



William Geiger, English



Steven Gold, Sociology



Stephen Goldberg, Biology



Stephen Gothold, Music



Warren Hanson, Biology



Myra Hart, Economics



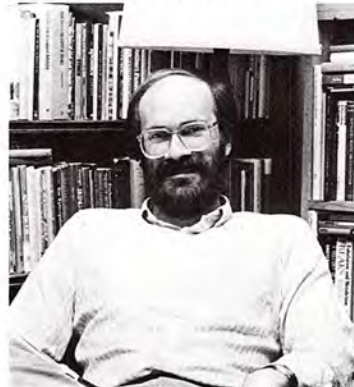
Richard Harvey, Political Science



Charles Hill, Psychology



Les Howard, Sociology



David Hunt, Philosophy



Hilmi Ibrahim, P.E. & Recreation



David Jacobs, P.E. & Recreation

After lunch the professor is again faced with sleepy students who are in a hurry to get out of class. Yet the professor continues to teach the class as if it is the most interesting class in the world. The professor goes home to grade papers, to rest and prepare for the next day. But, behold one of the students who does not understand the assignment will call him at home. The professor may find himself on the phone much longer than he had hoped . . . The day and life of a professor is never done.

Picture  
Not  
Available



Tim Jenkins, Physics



Joyce Kaufman, Political Science



Sterling Keeley, Biology



Sharad Keny, Mathematics



Anne Kiley, English



Edward Klein, Communication Disorders



Charles Laine, Business Administration/Economics

Picture  
Not  
Available



Julie Masterson, Communication Disorders

Patricia Lewis, Education



Amy Mass, Social Work

Picture  
Not  
Available



Michael McBride, Political Science

Irene Matz, Speech Communication

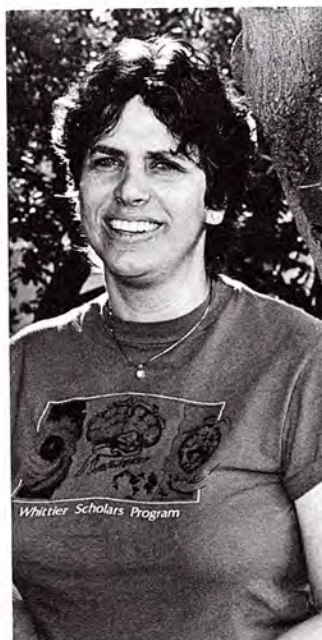


Vicki McCluggage, Communication Disorders

Picture  
Not  
Available



Hugh Mendez, P.E. & Recreation



Susan Meyers, Art

Picture  
Not  
Available

Clifton Morris, Biology



Kathleen Mowm, History

Nancy McCoy, Communication  
Disorders



David Muller, Music



Harry Nerhood, History



John Neu, Political Science/Business



Frances Nobert, Music



Donald Nuttall, History

---

The support and foundation of Whittier College are its faculty, staff, and administration, holding together the campus community as one structure on a firm base of education.

---



Christina O'Brien, Frgn. Lang.



Lucy O'Connor, Psychology



Orpha Ocshe, Music



Lois Oppenheim, Political Science



Stephen Overturf, Economics



Steve Penn, P.E. & Recreation



Michael Praetorius, Philosophy



Joseph Price, Religion



Paula Radisich, Art



Cathy Reback, Sociology



Charles Reeg, Chemistry





Dallas Rhodes, Geology



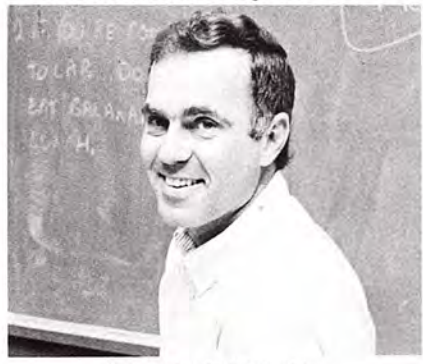
Sandra Robison, Director Reading Center



Ron Rybkowski, Drama



Katherine Sapiro, Biology



Robert Schambach, Chemistry

Picture Not Available

Gordon Shields, Chemistry



Fritz Smith, Mathematics



Robert Speier, Art



Vala Jean Stultz, Home Economics

Picture Not Available

Claudine Thire, Foreign Language



Henry Townsend, Business Administration

Each faculty member is a door through which the students may enter a new area of knowledge; an entryway through which the students may find new avenues to explore; this is the basis of the liberal education.



Darlene Dugan, Development Secretary



Joyce Dunham, Vice President's Secretary



Araxy Eksigian, Business Office

Picture  
Not  
Available



Beth Fernandez, Assistant Director Alumni Office

Joan Ewing, Career Planning and Placement



Valerie Few, Library Clerk



Martha Flores, Broadoaks



Holly Flutot, Broadoaks



Dennis Forthoffer, Learning Resource Center

Picture  
Not  
Available



Mary Lou Gallagher, Personnel

Fern Fritz, Education Secretary



Mercedes Garcia, Assistant Director Broadoaks

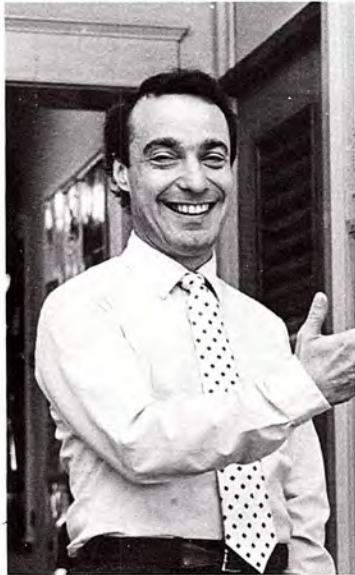
Picture  
Not  
Available

Catherine George, Whittier Scholars Secretary

Picture  
Not  
Available



Flora Goodale, Campus Nurse



Bob Giomi, Associate Dean of Students

Picture  
Not  
Available

Rebecca Gonzalez, Development

Picture  
Not  
Available



Linda Harrell, Business Office

Pam Goldbach, Library Clerk

Audrey Gruber, Admissions



Barbara Green, Dean of Students



Troy Greenup, Computer Center



Susie Harvey, Director Alumni Office



Jody Hedrick, Business Office



Pat Henderson, Student Services Secretary



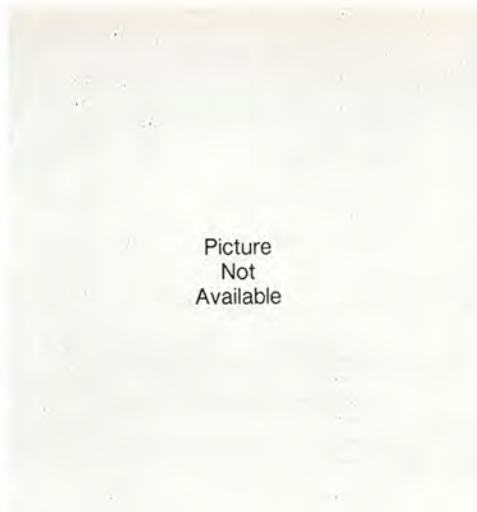
James Hoag, Computer Center



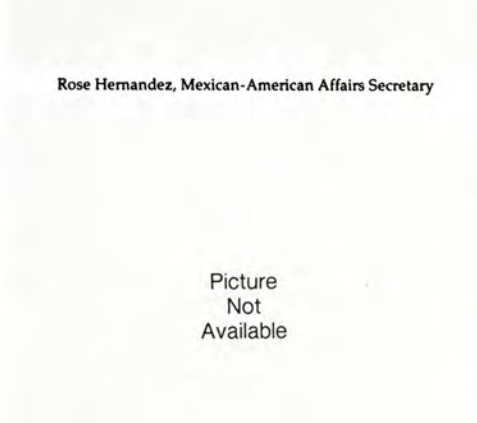
Barbara Jefferson, Special Assistant to the President



Betty Kenworthy, Registrar

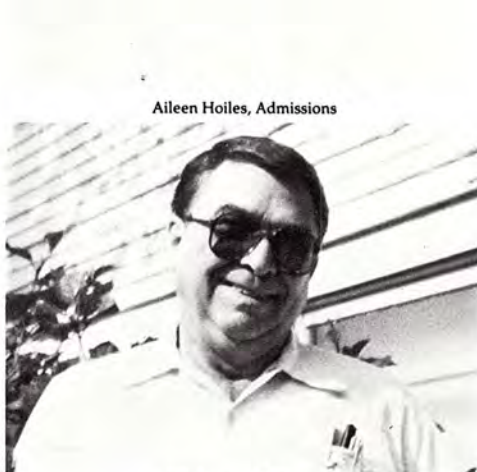


Picture Not Available



Rose Hernandez, Mexican-American Affairs Secretary

Picture Not Available



Aileen Hoiles, Admissions



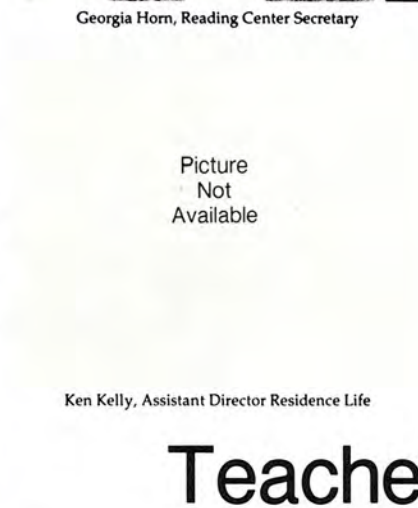
Al Johnston, Mailroom



Rebecca Hill, Broadoaks



Georgia Horn, Reading Center Secretary



Picture Not Available

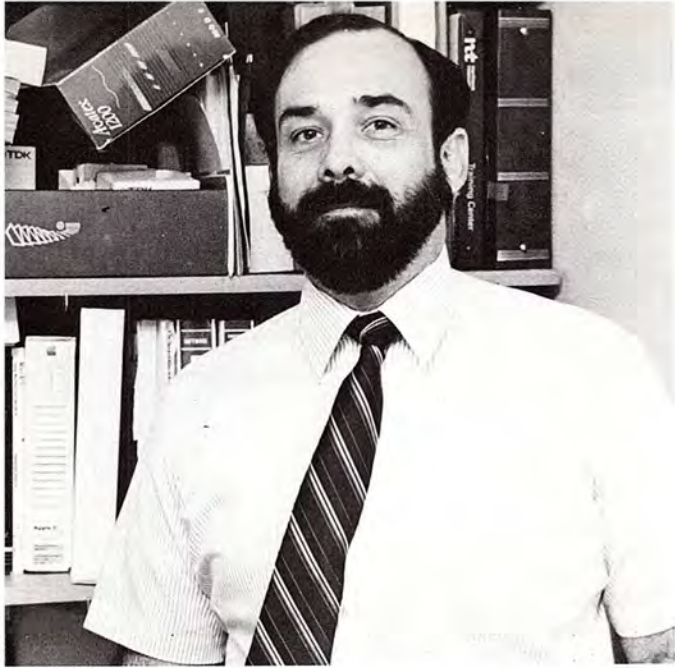
Ken Kelly, Assistant Director Residence Life

# Teachers

I really enjoy and have come to appreciate the faculty here at Whittier. After talking to my friends who go to larger schools, I realized just how much I appreciate the faculty here. I mean, they have the time and are more than willing to help you out with problems, not only in homework, but any kind of problem. With some of the professors that I've had, they're not just teachers, but friends.

Dave Huron

Whittier College Student



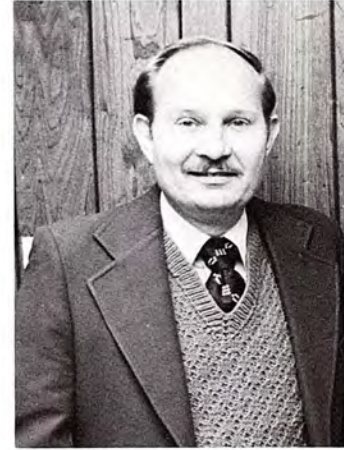
Harriet Kittle, Bookstore Manager



Peggy Kunkel, Campus Inn



Anne La Chapelle, Xerox Center



Jerry Laiblin, Vice President Development



Norma Larkin, Business Office



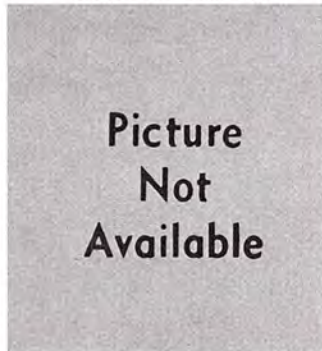
Douglas Locker, Associate Director Admissions



Joyce Logue, Business Office



Robert Marks, Vice President Academic Affairs



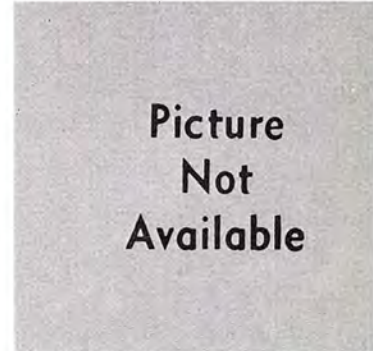
Tim Masterson, Admissions



Terry McBride, Comptroller



Marji McCall, Director Residence Life



Darline McCracken, Admissions Secretary



George McKernan, Area Coordinator



Angie McLaughlin, Alumni Office Secretary

Picture  
Not  
Available

Cameron Moeser, Admissions



Diane Morales, Broadoaks

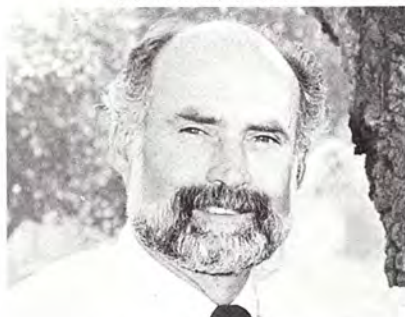


Picture  
Not  
Available

Sandra Montez, English and History Secretary



Jonathan Moody, Chaplain



Philip O'Brien, College Librarian

Picture  
Not  
Available



Katy Murphy, Director Admissions

Christine Nelson, Music Secretary



Jean Osberg, Broadoaks



Martin Ortiz, Director Mexican-American Affairs



Jane Perry, Library Clerk



Phil Pizzino, Mailroom



Kathleen Pompey, Broadoaks Secretary



Allan Prince, Executive Vice President



Charlotte Ramsey, Executive Secretary to the President



Laura Riley, Financial Aid



Klane Robison, Director of Planned Giving



Bea Romero, Registrars Office



Nadine Rosner, Registrars Office



Picture Not Available

Sandra Sarr, Development



Richard Scaffidi, Associate Director Admissions

Picture Not Available

Cheryl Seagren, Director Annual Giving

Picture  
Not  
Available

Sherry Squire, Admissions

Picture  
Not  
Available

Virginia Stuber, Security Secretary



George Tenopir, Director Financial Aid

Picture  
Not  
Available

Robert Torres, Maintenance Receptionist



Donald Stewart, Director Communications



James Surwillo, Director Physical Plant



Bud Thorup, Director Campus Inn



Jan Turner, Academic Affairs Secretary

Picture  
Not  
Available

William Stimmler, Campus Physician

Picture  
Not  
Available

Colleen Szlamka, Development Secretary



Ann Topjon, Reference Librarian







Terri Valenzuela, Development



Linda Van Vleet, Registrars Office

Picture  
Not  
Available



Mary Ellen Vick, Assistant Librarian

Maggie Velez, Advisement Secretary



Karen Votaw, Residence Life Secretary



Judith Wagner, Director Broadoaks



Judy Wagner, Drama and Art Secretary



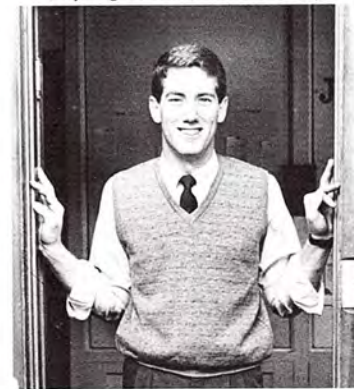
Susan Wille, Broadoaks



Jan Williams, Development



Jim Williamson, Security Chief



Ken Woods, Admissions



Melissa Woods, Area Coordinator

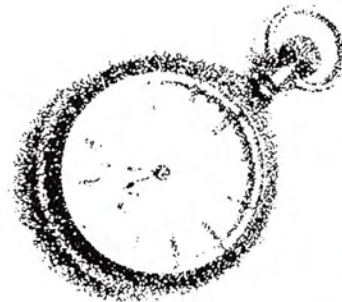
Picture  
Not  
Available

- *Athenians*
- *Franklins*
- *Metaphonians*
- *Lancers*
- *Palmers*
- *Orthogonians*
- *Thalians*
- *Penns*
- *Sachsens*

---

---

A  
DAY  
IN  
THE  
LIFE



■ *Societies*

■ *Societies*

■ *Societies*



Moving into their 59th year, the Athenian Society continues to hold tight to its strong values of sisterhood, love, friendship and individuality. These are the values which radiate through the Ladies of the Athenian Society in 1987-88. They kicked off the year with a homecoming brunch which brought on great memories and renewed old friendships. The fall semester continued with a father-daughter BBQ, memorable date parties and stags, and several fund raisers.

Six beautiful new ladies were welcomed into the family in January. Throughout the spring semester the ladies had a successful Club 'Open,' participated in Spring Sing (walking away with an award), a mother-daughter brunch, the spring formal, not to mention more stags, fund raisers, and mischief. The Athenian ladies still have time to get involved in campus activities as well, but always have time for their sisters.



Marni Anderson  
 Janine Baldis  
 Yvette Coquelet  
 Laura Garcia  
 Marlene Garcia  
 Lisa Garman  
 Gretchen Geiger  
 Sherrie Hill  
 Yvonne Lembi  
 Maria Lovato  
 Vickie Lovato  
 Irma Marin  
 Samara Niccoli  
 Miriam Penn  
 Kay Ryan  
 Erika Taddey  
 Julie Tracy  
 Jennifer Turner  
 Chris Uehlein  
 Sandy Wobig





# Franklins

John Ashby  
Fred Eckdahl  
Anthony Almeida  
John Hodroff  
Fritz Murphy  
Tony Signoret  
Tony Macallister  
Dean Knapp  
John McGuire  
Dan Tarquin  
Jeff Donlevy  
Dave Donlevy  
Brendan Macaulay  
Angus "Moose" McKelvey  
Paul Lomanto  
Bob Ratliff  
Mike Kelleher  
Steve Ames  
Phil Reiff  
Larry Denyer  
Tony Farineila  
Dave Garland  
Matt Henry



After a successful first semester of partying (and friendly policemen) and academics (some), mother nature and her October 1st antics left the Franklins and their content residents with no house. Once again, in a new abode (although not a house), the sons of Ben trudged through the second semester — star-

ting with a new group of boys. Second place in Intramural Basketball and a prize in Spring Sing were among their achievements. Bar nights were not numerous, but they were outstanding as usual. Next year the Franklins will remain the largest male society on campus. In all, it has been a great year.





The Metaphonian society, more commonly known as "The Mets," once again had a year full of fun, frolic, and friends! Activities included Homecoming, Rush, Pledging Spring Sing and various service projects to pay their tribute to the wonderful community of Whittier! Of course, the necessities of college life were not forgotten by the Mets. Several gatherings took place at the Met House in which such things as holidays, victories of sport events and Friday afternoons were celebrated. Stags, date parties, and frequent trips to the Red Onion on Tuesday nights also filled their social calendars! Academics and talents were not looked over however, with Mets participating in cross-country, water polo, women's lacrosse, band, drama, choir, cheerleading, the Q.C. and BOG. They are looking forward to another great year in 1988-89!





Debra Baverman  
 Cori Bineau  
 Steffanie Cox  
 Debbie Crean  
 Michele Dodge  
 Linda Dubuque  
 Holly Frank  
 Sylvia Gortz  
 Sara Jamison  
 Stephanie Johnston  
 Melissa Lopez  
 Gina Lujan  
 Jeannette McKinney  
 Julie Nilsen  
 Sherri Preiss  
 Allison Reynolds  
 Diane Roberts  
 Amy Robison  
 Julie Rytand  
 Anne Shupek  
 Erika Stumpf





This year's Lancer society consists of 18 members: Pete McGarry, Rick Hall, Trevor Esko, Adam Eyres, Brian Gray, Mike Tusken, Kevin Lacey, Jorge Martinez, Derek Price, John Crowe, Pete Weidenfeld, Mark Taylor, Xavier Martinez, Jim Overland, Jeff "Skippy" Reeves, Jim Waite, Jaime Martinez, Robert Oliver, and John Cunningham.

The Lancers put on another successful Mona Kai party this spring. The traditional event was marked by stags with each women's society and culminated in the campus wide event on Saturday April 23. Other Lancer events this year include the 54th annual homecoming brunch at the Velvet Turtle, a trip to the Colorado river, events with the Lancer Little Sisters, and success in the intramural sports. In short it was another banner year for the Lancers.



# LANCERS





Kim Aitken  
 Cheryl Cervantes  
 Michelle Cervantes  
 Deborah Cramer  
 Joyce Davidson  
 Cathy Davitt  
 Carrie Durden  
 Julie Duval  
 Carrie Guillen  
 Darcie Guy  
 Cheryl Harlan  
 Betty Hart  
 Becky Hedrick  
 Angela Homann  
 Barbara Johnson  
 Kim Laiblin

Jessica Layton  
 Terri Lo-Cascio  
 Laura Martin  
 Valerie Master  
 Vicky McKay  
 Judith Mika  
 Patti O'Dea  
 Tina Pai  
 Deborah Paul  
 Kerri Payne  
 Karen Ritter  
 Sandy Scheiber  
 Lori Swatez  
 Rebecca Totaro  
 Jennifer Webb



Life as a member of the Palmer society can be described in a word: busy. Selling candy apples at the football games, putting on Rush and a brunch for the alumni, having stags and hosting FACU, and a few date parties for good measure. But Palmers still found time to study and get involved with campus activities. With thirteen new members after pledging, the Palmers can be seen everywhere about campus.



This year's actives carried on the camaradery and brotherhood shared throughout the course of the societied existence, excelling in academics as well as in athletics. This year Brother's Paul, Steve, Ramon, and Chris won honors along with Brothers Keith, Rick, Lavon, and Aldin who participated in this year's football team. Brother Ramon was the captain of football and baseball and won honors in both sports. Brother Kwan was represented in all three major theatre productions for this year. In this year's Spring Sing, the "O's" participated as the California Raisins and won the "Most Creative" award. The "O's" also sponsored "Side Saddle" which is "The Club Event" of the year with a hay ride and a western dance.



Paul Albertini  
 Lavon Barton  
 Ed Brooks  
 Jerry Hier  
 Dave Jefferson  
 Ramon Juerez  
 Keith Lagocki  
 Kwan Lee (Spring President)  
 Kevin Marshall  
 Steve Ramsay  
 Ron Sykes (Fall President)  
 Aldin Tatley  
 Phil Wenker  
 Chris Whitaker  
 Rick Younger







Thaliens  
 Carole Azuma  
 Danelle Beard  
 Mary Butterly  
 Dona Fraser  
 Maria Martinez  
 Paige Matsumoto  
 Jamie Morrow  
 Debbie Semeliss  
 Lizca Spalding  
 Jenny Taylor  
 Holly Tuckett  
 Laurel Wallace  
 Stephanie Wiggins





The Thaliens one of the four women's societies at Whittier College, are composed of twelve members. The members describe themselves as being outgoing, fun-loving and full of enthusiasm. They are active in any extracurricular activities that include sports, working at the Community Center with handicapped people, and sponsoring their Club Open which is the Boxer Rebellion. Two of the most outstanding incidences that happened to the Thaliens this year was the destruction of their house due to the October 1st earthquake and the election of one of their members as the alumni president (Mary C. Butterly). The Thaliens are an active society and one can find them involved in something. In their own words they like to "hang out and be cool."



# PENNS



Kevin Burke  
John Banks  
Tom Forland  
Dino Goden  
Suresh Gurung  
Eric Hombo  
Dave Johnson  
Karl Krenz  
Joe Levno

Leonard McLaughlin  
Kevin Moore  
Nathan Smith  
Mike Speck  
Yuhadhi Sundaramoorthy  
Tuan Trinh  
Emmanuel Vitrac  
Francois Vitrac  
Scott Walston







ADULT & CHILD

PSYCHIATRY

Eloise C. Haun M.D.

By Appointment





- *Activities*
- *Clubs*
- *Organizations*
- *Activities*
- *Clubs*
- *Organizations*
- *Activities*
- *Clubs*

---

---

# A DAY IN THE LIFE



■ *Activities*

■ *Clubs*

■ *Organizations*

# Acropolis

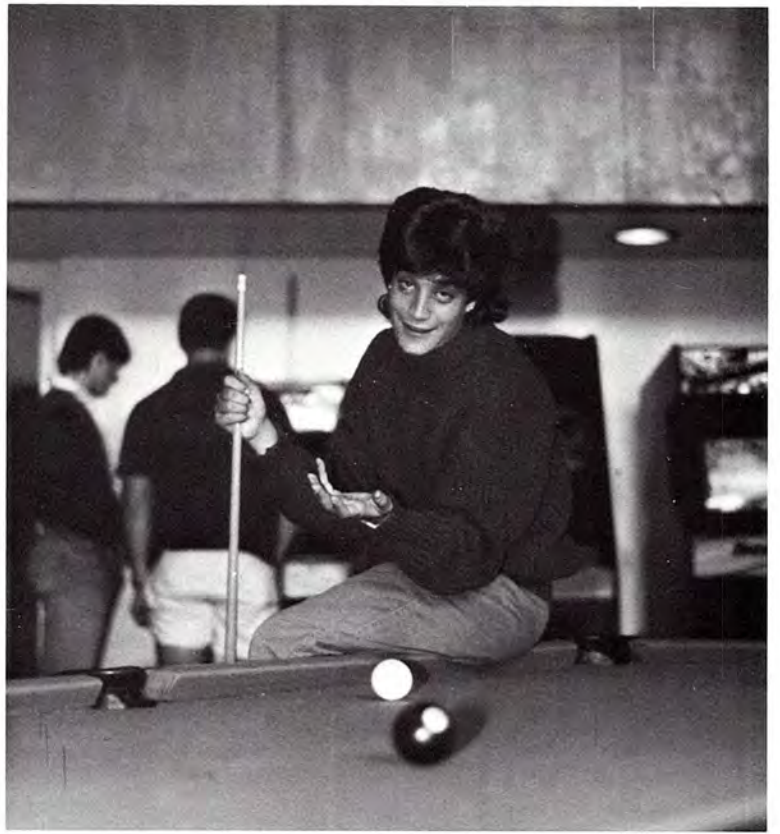






Jennifer Berry  
Carrie Durden — Editor  
Amy Fitzgerald — Advertising  
Dave Huron — Photo Editor  
Stephanie Johnston  
Doug Kotkin — Assistant Editor  
Joe Levno — Photo Editor  
Melissa Lopez  
Alex Mangosing  
Anne Mitchell  
Rene Ramos — Layout Editor  
Amy Robison  
Valerie Whatley  
Donna Vollbrecht  
Vaught King — Advisor  
Fred Rocha — Advisor





# Board of Governors

|                    |                    |                 |                    |
|--------------------|--------------------|-----------------|--------------------|
| JENNY BERKLEY      | DEVELOPMENT        | KELLI HOKANSON  | ASWC PRESIDENT     |
| TODD BURSAW        | BUSINESS MANAGER   | COLIN HUNTER    | OMBUDSMAN          |
| MICHELLE CERVANTES | SPECIAL COMMITTEES | LEDA MINTZER    | PROGRAM BOARD      |
| DEBBIE CREAN       | TREASURER          | MIKE TUSKEN     | PRESIDENT PRO TEMP |
| RANDALL DAVIDSON   | FRESHMAN LIAISON   | KELLY ROBB      | SECRETARY          |
| DAMON HESS         | OFF CAMPUS REP.    | EMMANUEL VITRAC | COMMUNICATIONS     |
| PAM HILL           | RHA LIAISON        | KAREN WRIGHT    | STUDENT SERVICES   |



# Resident Advisors

Jeff Gombar  
Paige Matsumoto  
Tom Fridge  
Rob Keeper  
Karen Ritter  
Jeanne Florance  
Mia Young  
Joyce Davidson  
Eric Stanley  
Kristi Davis  
Dave Munoz  
Jennifer Sechrest  
Brian Krylowicz  
Sherri Hill  
Amie Goldberg  
Randall Davison  
Carmen Salas  
Shelley Perkins  
Caiti Guyan  
Brock Fowler  
Sandy Scheiber





# SOS





# Artorian Order of the Knights of Pendragon







# Friday Afternoon Club Unlimited

It's Friday afternoon. After a week of grueling classes and studying, you need a break. Not sure what to do? Try going to FACU.

What's FACU, you ask? The Friday Afternoon Club Unlimited. It is held at a different location each week (you can find out where through the grapevine) and for a nominal fee, you can drink as much beer as you like while you socialize with your friends. The festivities usually begin around 2:30, and often continue until well after dark. It is a great way to relax and prepare for the weekend.





# Cheerleaders

Jennifer Turner — Football  
Maria Lovato — Football  
Miriam Penn — Football, Basketball  
Erikka Stumpf — Football  
Holly Frank — Football  
Michele Dodge — Football  
Gina Lujan — Football  
Ron Pardini — Football

Lisa Watson — Football  
John Cunningham — Football  
Tamiko Marimoto — Basketball  
Kimberly Laiblin — Basketball  
Annalisa Blake — Basketball  
Michelle DePriest — Basketball  
Judith Mika — Basketball





# Band





# Psi Chi

Peter Weidenfeld — President  
Sabine Hartmann — Secretary  
Laura Parsons — Vice President  
Erenee Sirinian — Treasurer  
Kim Aitken  
Kevin Lacey  
Rich Simon  
Mia Young

Sheri Trzeciak  
Jennifer Thompson  
Marivic Perez  
Philip Prouty  
Jessie Vall-Espinosa  
Mary (Kathy) Schmierer  
Laura Hoyt  
Dr. David Volckmann





# Alpha Psi Omega



Charles Van Steenburgh — President

Jay Bechtol — Vice President

Christina Marx — Secretary

Michelle Shipp

Jack Millis

Ally Towersey

Jennifer Sechrest

Jim Hart

John Murdy

Ron Rybkowski

Jessica Fineburg

Maria Pederson

Sheryn Gray

Ron Pardini

Judy Shelton

John McCarthy

Eric Gothold

Caiti Guyan

Karen Foss

Karen Berry

Richard Scaffidi

Dr. Anne Kiley

Dr. Robert Treser

Jack DeVries

# Pi Sigma Alpha



Grace Abu Jamra  
Robin Algozaibi  
Vibeke Brask  
Lisa Burnett  
Cindi Carrell  
Michelle Cervantes  
Debbie Crean  
Tom Darnold  
Denise Diaz  
Carrie Durden  
Jeanne Florance  
Sheri Frost  
Gordon Gates  
Kim Horning  
Doron Kalkstein  
Brendan Macauley

Valerie Master  
Vanessa Mills  
Jill-Alexia Orr  
Sheri Preiss  
Ron Proul  
Jeff Reeves  
Stacy Stonehocker  
Emmanuel Vitrac  
Mei-lan Wong  
Dr. Fred Bergerson  
Dr. Richard Harvey  
Dr. Joyce Kaufman  
Dr. Mike McBride  
Dr. John Neu  
Dr. Lois Oppenheim

# Alpha Pi Delta

Grace Abu Jamra  
John Ashby  
Kimo Bajet  
Keith Black  
Fiona Chan  
Steve Dow  
Dean Farano  
Brock Fowler  
Donna Galvan  
Gordon Gates  
Manny Gonzalez  
Frank Haun  
Kelli Hokanson  
Sally Hernandez  
Colin Hunter  
Rob Keeper  
Greg Kim  
Patrick Lee  
Maria Lovato  
Laurie Lyon  
Simone Luyt  
Sandra Lopez

Sandra Mah  
Irma Marin  
Darin Mekkers  
Monica Montoya  
Pedro Morales  
Fritz Murphy  
Patti O'Dea  
Shelley Oye  
Daralyn Plishka  
Joan Randall  
Leisa Roby  
Sherrin Ross  
Elida Saravia  
Susan Sinfield  
Alden Tatley  
Mark Taylor  
Mike Tuskin  
Jennifer Weed  
Mike Westmoreland  
Pamela Wong  
Mia Young



# Alpha Kappa Delta

Karby Leggett  
Jenkins Leggett  
Rod Tapps  
Jen Fuller  
Abby Becerril  
Mindy McQuivey  
Linda Bennett  
Rosana Gomez  
Laura Hoyt

Kaz Yamada  
Beth Fitzpatrick  
Vince Yasaki  
Toshiki Iwase  
Seok-Won Lee  
Leda Mintzer  
Ismael Cantu  
Dr. Steven Gold



# Cap and Gown



- Dr. Barbara Green
  - Dr. Kathy Sapiro
  - Beth Brownell
  - Kris Muir\*
  - Fiona Chan
  - Janet Wheeler\*
  - Vanessa Mills\*
  - Nina D'Anna Santos
  - Renee Klund
  - Kelli Hokanson
  - Cindi Carrell
  - Michelle Cervantes
  - Megan Sjoberg\*
  - Sabine Hartmann\*
  - Pam Hill\*
  - Andrea Shorter
  - Jeanne Florance\*
  - Mei-lan Wong\*
- \*new members for 1988-89 school year



# Asian Student Association



Lisa Burnett  
J. B. Byun  
Fiona Chan  
Rosa Chen  
Carol Chong  
John Cunningham II  
Paul Dominguez  
Hai Ho  
Winnie Ho  
Robert Irons  
Elizabeth Kay  
Terri Lo-Cascio  
Alex Mangosing  
Suzane Pham

Kala Ramanathan  
Hatsue Sano  
Ramon Santos  
Mandy Sedghat-Ardakani  
Kris Swanson  
Erik Takeshita  
Dai Tran  
Kumiko Uejima  
Mia Young  
Patrick Lee — President  
Tuy Mai — Secretary  
Danny Chou — Treasurer  
Dr. Hsaio-Min Wang

# Residence Hall Association

Keith Black — President  
Janet Prentice — Vice President  
Pam Hill — BOG Liaison  
Kandice West  
Megan Sjoberg

Dawn Shoenbien  
Sandra Mattingly  
Heidi Gustafon  
Marji McCall-Stanley — Advisor





# Black Collegian Association



# Photography Club



# Publications Board



Emmanuel Vitrac — Chair  
Cindi Carrell — Quaker Campus  
Carrie Durden — Acropolis  
Simone Luyt — Literary Review  
Dr. Charles Laine — Accounting  
Dr. John Neu — First Amendment

Barbara Green — Dean of Students  
Kelli Hokanson — ASWC President  
Julie Duval — Ad Hoc  
Dr. Joyce Kaufman — Ad Hoc  
Margeurite Wamsley — Secretary  
Matt Taylor — Darkroom Manager

# Alumni Student Council

Tom Bienz  
Michelle Cervantes  
Michele Mason  
Vanessa Mills  
Dianne Ostrander

Rebecca Rasko  
Alicia Staples  
Jennifer Webb  
Bonnie Fleck — Fellow  
Beth Fernandez — Advisor



# Model United Nations



Vanessa Mills  
Toshiki Iwase  
Randall Davidson  
Karen Wright  
Brian Barreto  
Dr. Mike McBride  
Julie Salcido  
Tracy Van Wormer

Cindi Carrell  
Jocelyn Erwin  
Michelle Cervantes  
Betty Hart  
Kris Swanson  
Nina D'Anna Santos  
Kim Horning  
Susan Andersen

# Clubs in Action





In addition to the clubs, activities, and organizations pictured here, Whittier College has many others, ranging from social clubs to honorary fraternities. Here is a list of some of the other groups on campus.

## Honorary Organizations

AMERICAN HOME ECONOMICS  
ASSOCIATION

BETA BETA BETA (BIOLOGY)

BIOLOGY COUNCIL

MUSIC ADVISORY BOARD

OMICRON DELTA KAPPA  
(LEADERSHIP)

PHI ALPHA THETA (HISTORY)



DELTA PHI UPSILON (CHILD DEVELOPMENT)

SIGMA TAU DELTA (ENGLISH)  
SPEECH, LANGUAGE, AND HEARING ASSOCIATION

STUDENT GOVERNMENT

FRESHMAN CLASS COUNCIL  
PROGRAM BOARD

RELIGIOUS ORGANIZATIONS

INTERNATIONAL CHRISTIAN  
FELLOWSHIP  
IOTA CHI





# Activities

College Republicans

Democratic Club

French Club

Poetry Club

Quaker Campus (Student Newspaper)

Ski Club





String Ensemble

Literary Review

Business Club

Society for the Preservation of Redheads  
(SPOR)

Cultural and Ethnic Organizations

Canadian Club

Hawaiian Islander Club

Hispanic Students Association



- *Soccer*
- *Football*
- *Basketball*
- *Lacrosse*
- *Waterpolo*
- *Tennis*
- *Baseball*
- *Track*

---

---

A  
DAY  
IN  
THE  
LIFE



■ *S*ports

■ *S*ports

■ *S*ports

# Mens' Soccer





### THE 1987-88 TEAM

- |                   |                     |
|-------------------|---------------------|
| Brian Barreto     | David Laskey        |
| Doug Booth        | Pou Lee             |
| William Chavez    | Tiong-Huai Lim      |
| Scott Crabb       | Michael MacCormick  |
| William Cranmer   | Paul Maestas        |
| Willie De Peralta | George Medina       |
| Michael Diaz      | Guy Mock            |
| Jakob Dinesen     | Marino Parada       |
| Michael Dolan     | Christopher Perkins |
| Bill Erikson      | Edward Peterson     |
| Trever Esko       | John Reich          |
| Steve Gaffney     | Ricardo Rey         |
| Wiley Jones       | Jim Westerberg      |
| Adam Kurtenbach   | Aaron Wiseman       |



## Womens Soccer

THE 1987-88 TEAM

Cindy Berk  
 Susan Cascio  
 Michelle Chomicz  
 Carrie Darling  
 Samantha Fingleton  
 Pamela Hill  
 Carol Hooper  
 Heather Johnston  
 Elisabeth Kimball

Leda Mintzer  
 Amy O'Neill  
 Becky Rumack  
 Debora Semeliss  
 Kathy Seymour  
 Megan Sjoberg  
 Theresa Van Wormer  
 Diana Weimer  
 Janet Wheeler





# Varsity Football

## THE 1987-88 TEAM

Aldin Tatley  
 Mario Garcielita  
 Ramon Juarez  
 George Casillas  
 Scott Mills  
 Dutch Eveleth  
 Daniel La Riviere  
 Sean Ching  
 Gaylan sweet  
 Aaron Kauhane  
 Rod Pesak  
 Mike Hernandez  
 Winston Aspinall  
 Charles Castille  
 Jon Egurrola  
 Russell Goo  
 Roger Brake  
 Lavon Barton  
 Robert Lopez  
 Robert Cioe  
 Jorge Mendoza  
 Todd Fujimori  
 David Michael  
 Ryan Rowlands  
 Todd Tanaka  
 Paul Albertini

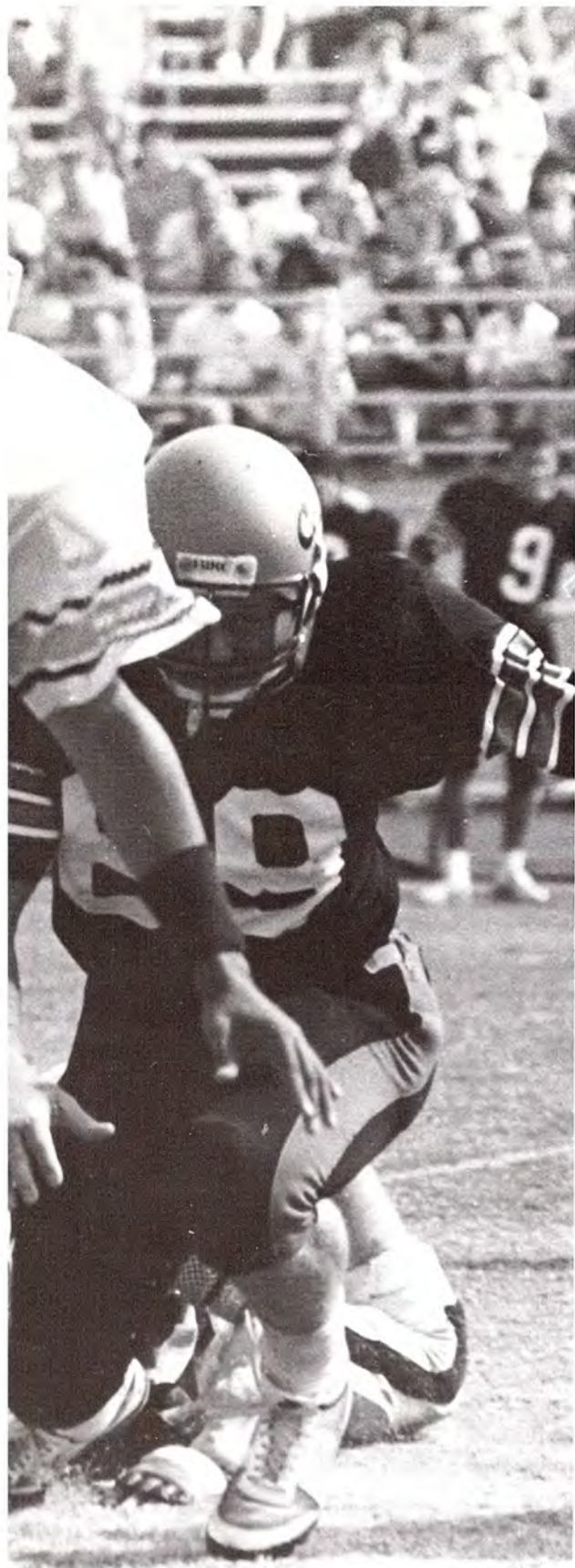
Michael Harris  
 Chris Whitaker  
 Phil Reieke  
 Keith Lagocki  
 Ken Mengel  
 Colin Oyama  
 Kevin Driskill  
 Steve Ramsey  
 Brian Chesnut  
 Rean Kailiuli  
 Jim Waltman  
 Richard Bennett  
 Dave Pelletier  
 Reid Mukai  
 Greg Burelli  
 Chris Smith  
 Mike Pulice  
 Art Acosta  
 Andrew Furuta  
 Ignacio Navarro  
 Doi Johnson  
 Rick Younger  
 Dustin Tano  
 Ian Yates  
 Louis Zavala













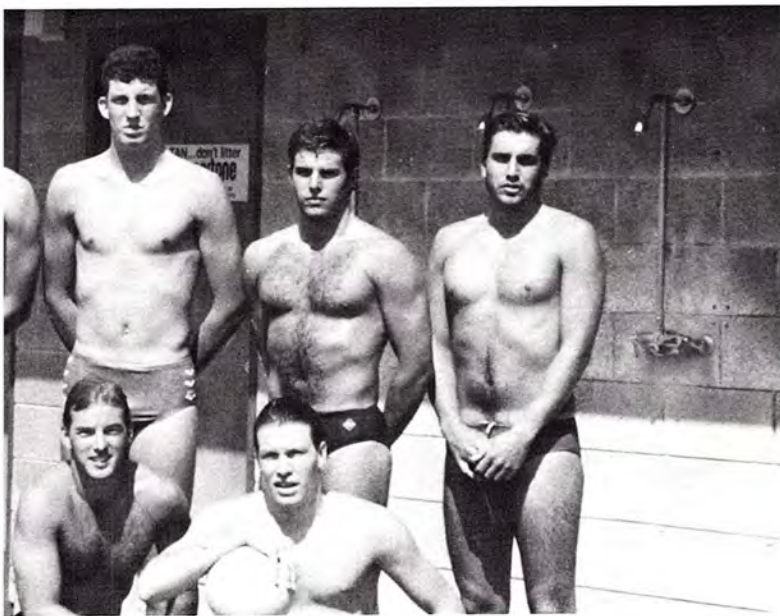
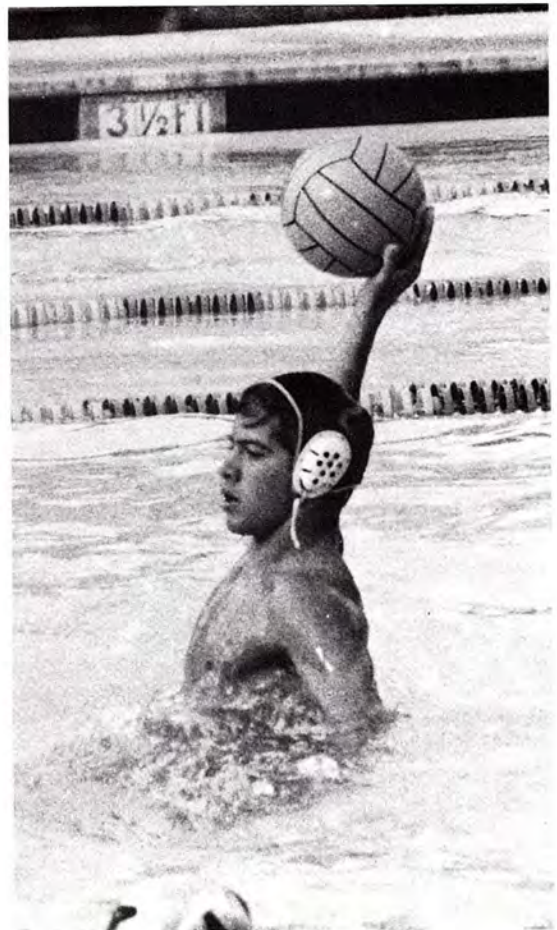
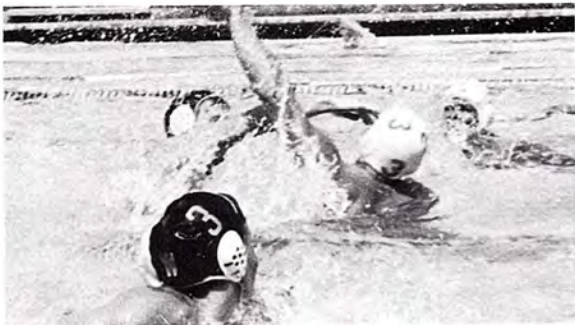
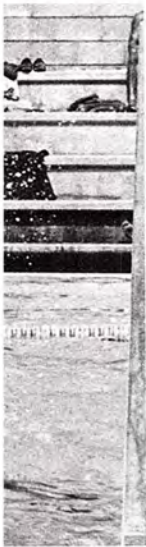
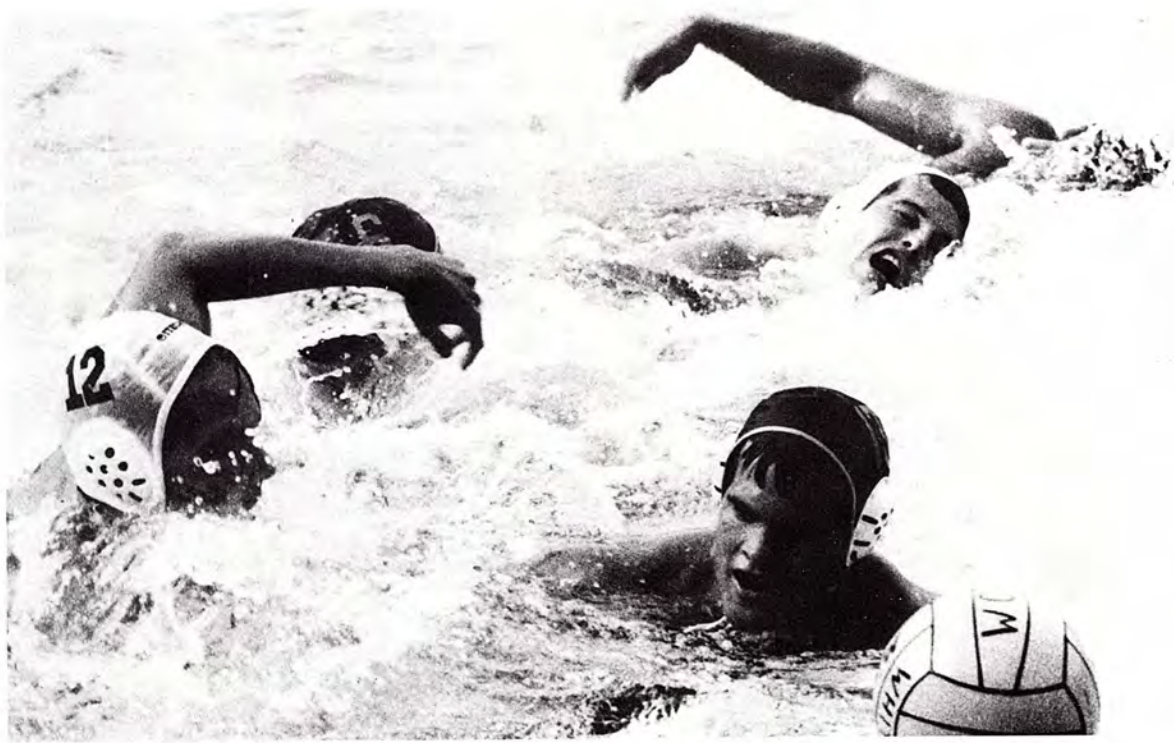
# Water Polo

## THE 1987-88 TEAM

Stephen Ames  
 Ramon Arrowsmith  
 Thomas Bienz  
 Keith Black  
 Jeff Boline  
 Edward Denyer  
 Jonathan Edge  
 Greg Gardiner  
 Mark Gothold

Paul Gothold  
 Damon Hess  
 Jeffrey Klein  
 Tony Kuhn  
 Kevin Lacey  
 Brendan Macaulay  
 Frederick Murphy  
 Charles Pratt  
 David Smith

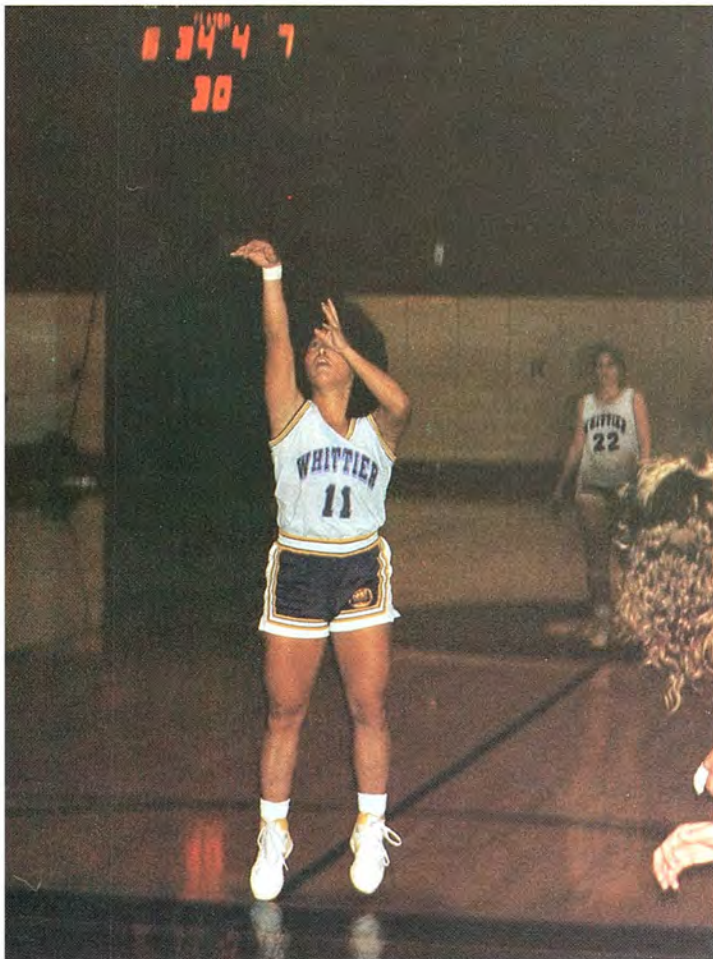




## Women's Basketball THE 1987-1988 TEAM

Danelle Beard  
Michelle Chomicz  
Joann Krohn  
Paige Matsumoto  
Jaime Morrow  
Patty Palmer  
Lizca Spalding  
Jennifer Taylor  
Karen Wright



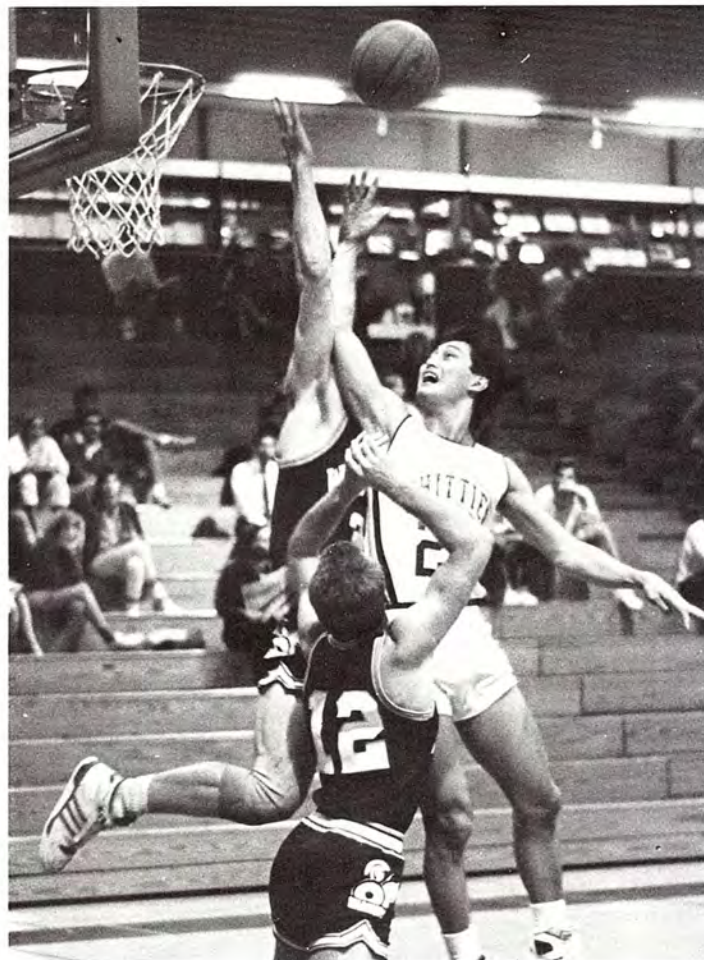


# Men's Varsity Basketball

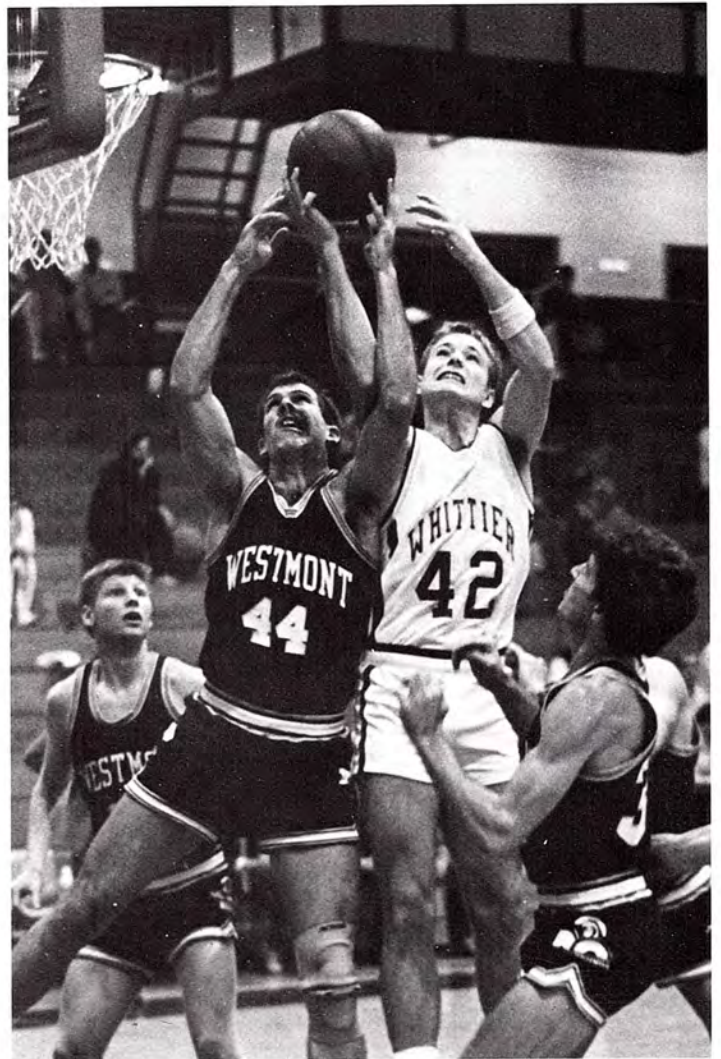
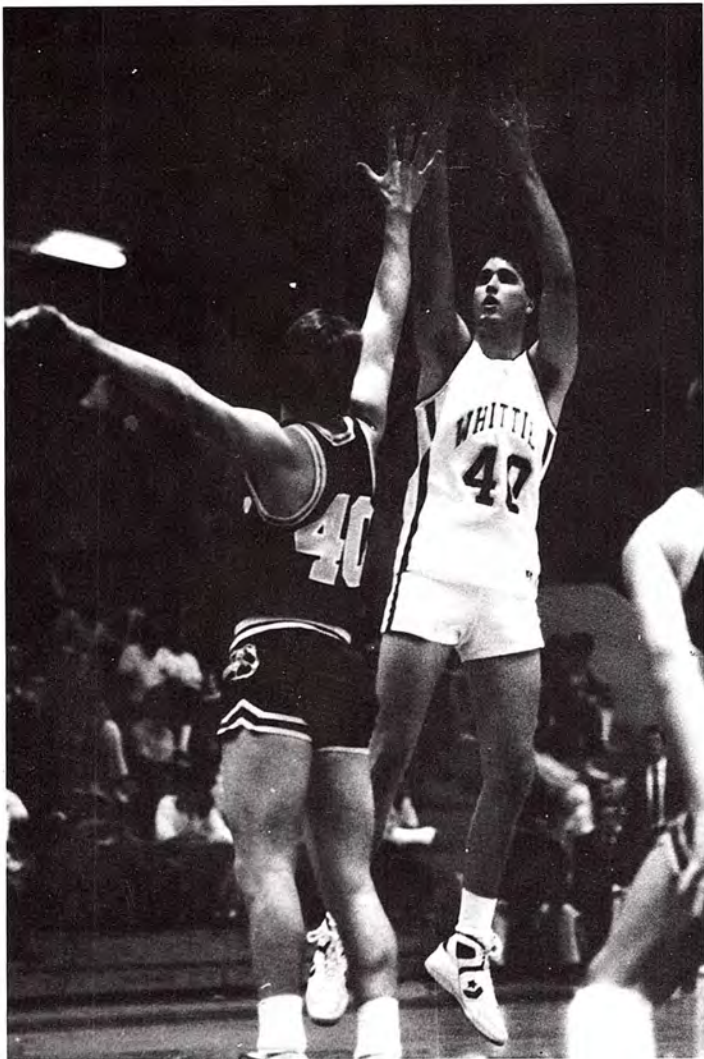
## THE 1987-88 TEAM

Charley Applegate  
Aaron Bach  
Jay Bailey  
Kimo Bajet  
Kyle Davis  
Ray DeVilla

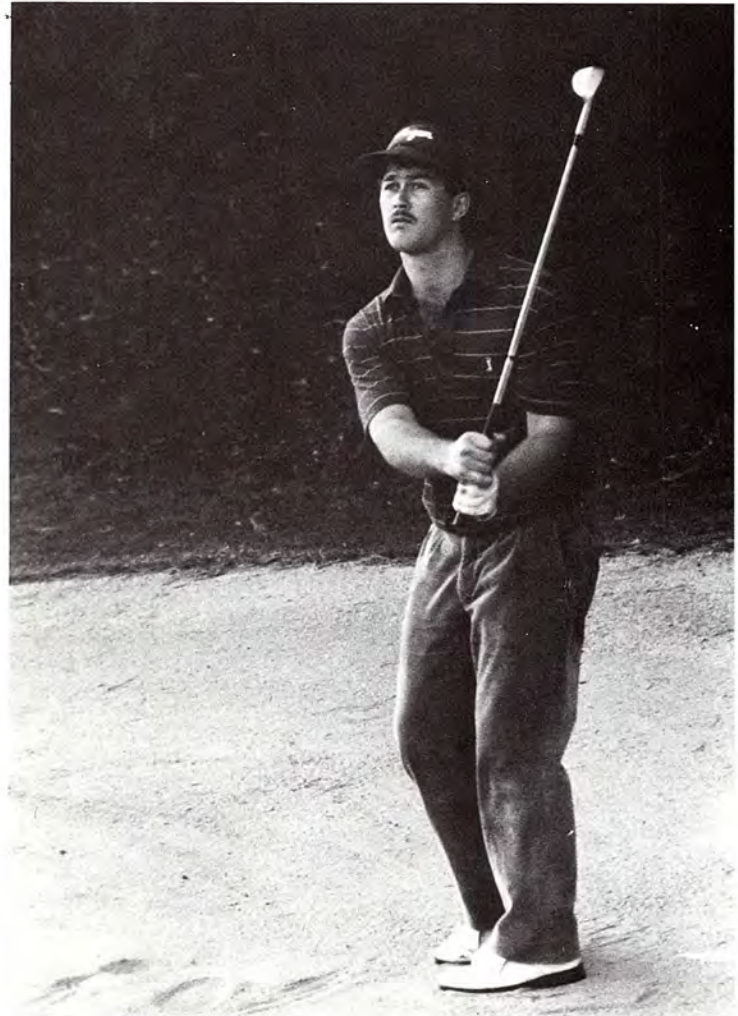
Whalen Elmore  
Freeman Greene  
Darin Mekkers  
Ricky Price  
Jim Pursell  
Ken Tano

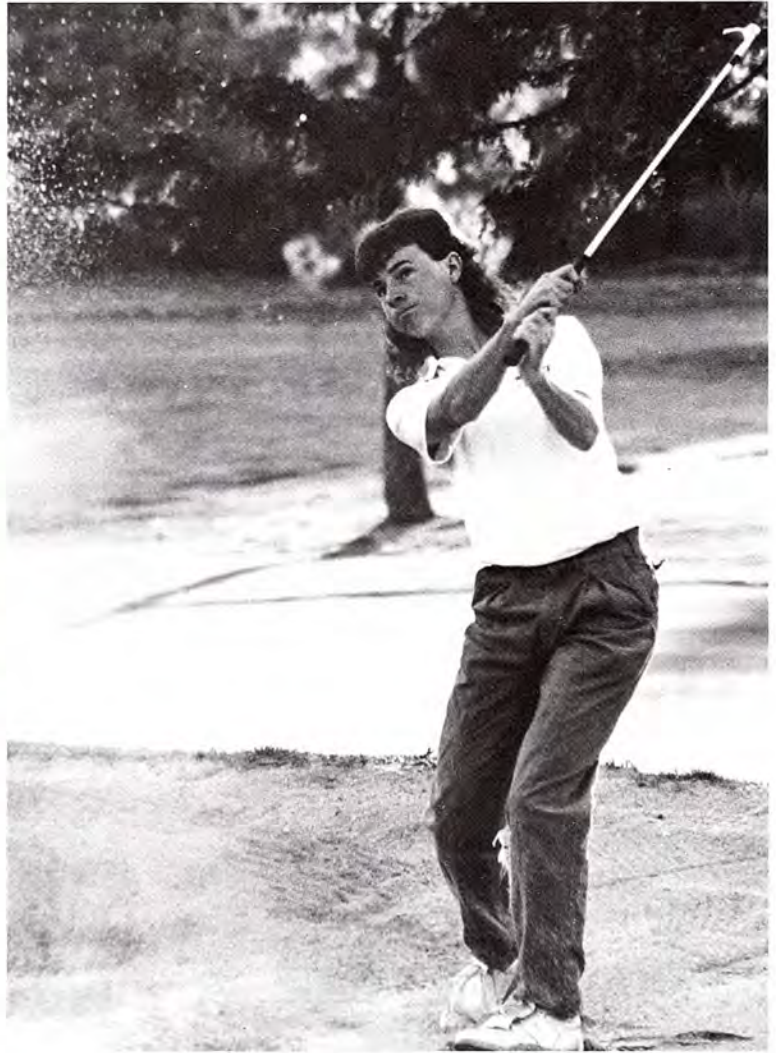
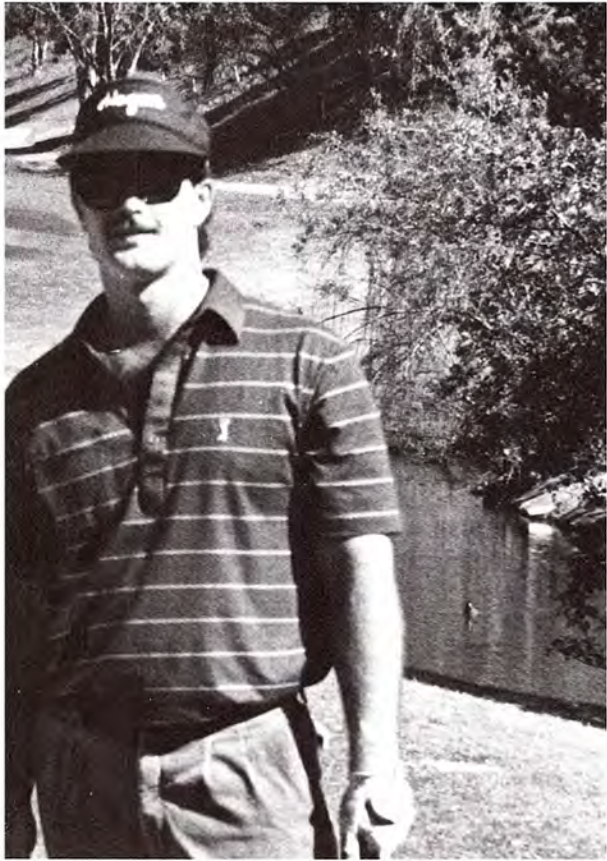






# Golf



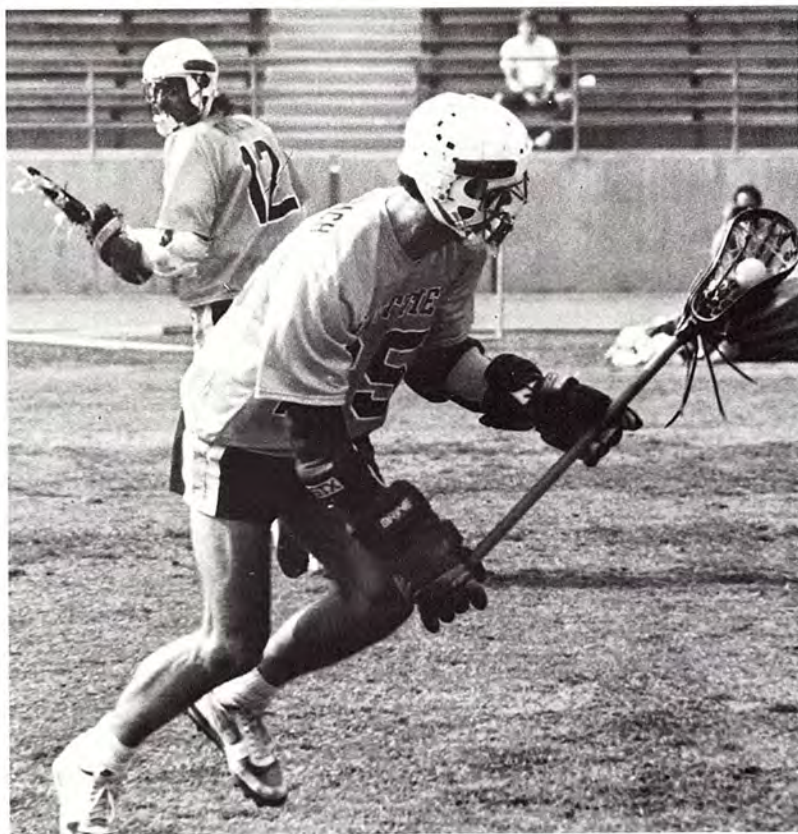


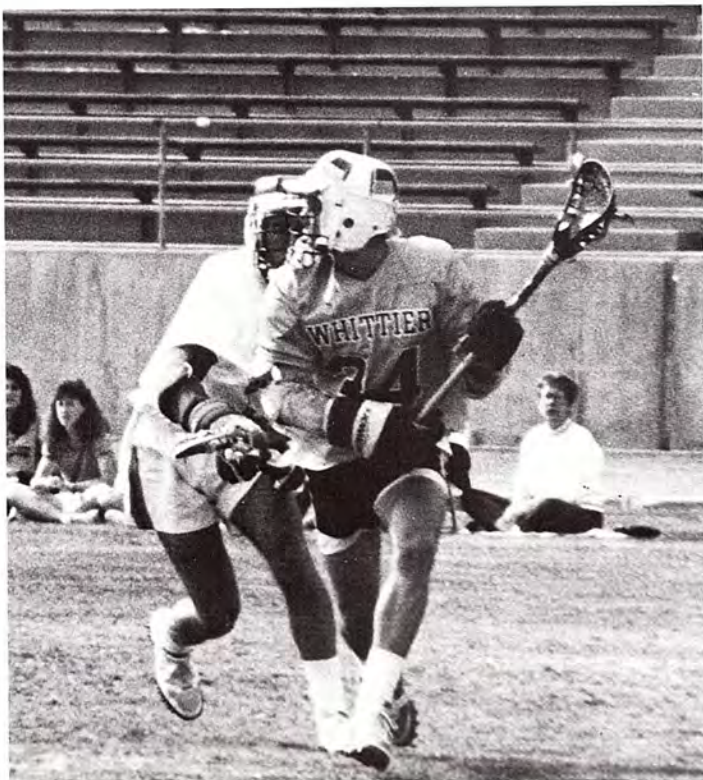
# Lacrosse

## THE 1987-88 TEAM

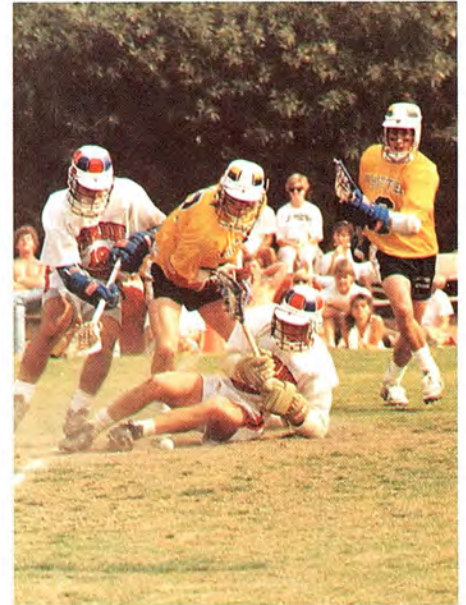
Pat Austin  
 Toby Balsey  
 Alex Barton  
 Mercer Borden  
 Scott Christenson  
 Kitt Clark  
 Ravi Dhillon  
 Bill Erikson  
 Craig Farano  
 Dean Farano  
 Tom Fridge  
 Steve Gaffney  
 Jeff Gombar  
 Frank Haun  
 Chris Heriza  
 Colin Hunter  
 Dal Hurtt  
 Kevin Hyatt

Rob Keeper  
 Adam Kurtenback  
 John Laurance  
 Sean McDaniel  
 Brian Nikula  
 Peter Pallad  
 Bryan Perry  
 John Reich  
 Burke Riggs  
 Mike Rogers  
 Steven Sather  
 Chris Schuster  
 Doug Sciotto  
 Rodney Tapp  
 Jon Tucker  
 Jim Westerberg  
 J T Wheeler  
 Rick Zimmerman









# VOLLEYBALL

## THE 1987-88 TEAM

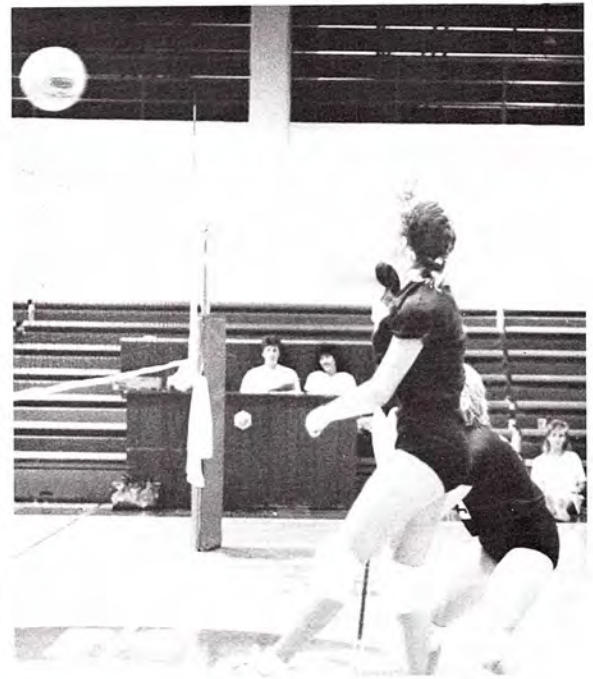
Cassandra Beyer  
Elizabeth Bowman  
Catherine Canon  
Marnie Day  
Connie Fanning  
Gretchen Geiger





THE 1987-88 TEAM

Alice Kodjababian  
Lindsay Lufkin  
Paula Molliconi  
Teresa Phelps  
Lourdes Ramboa  
Holly Tuckett  
Stacey Ward

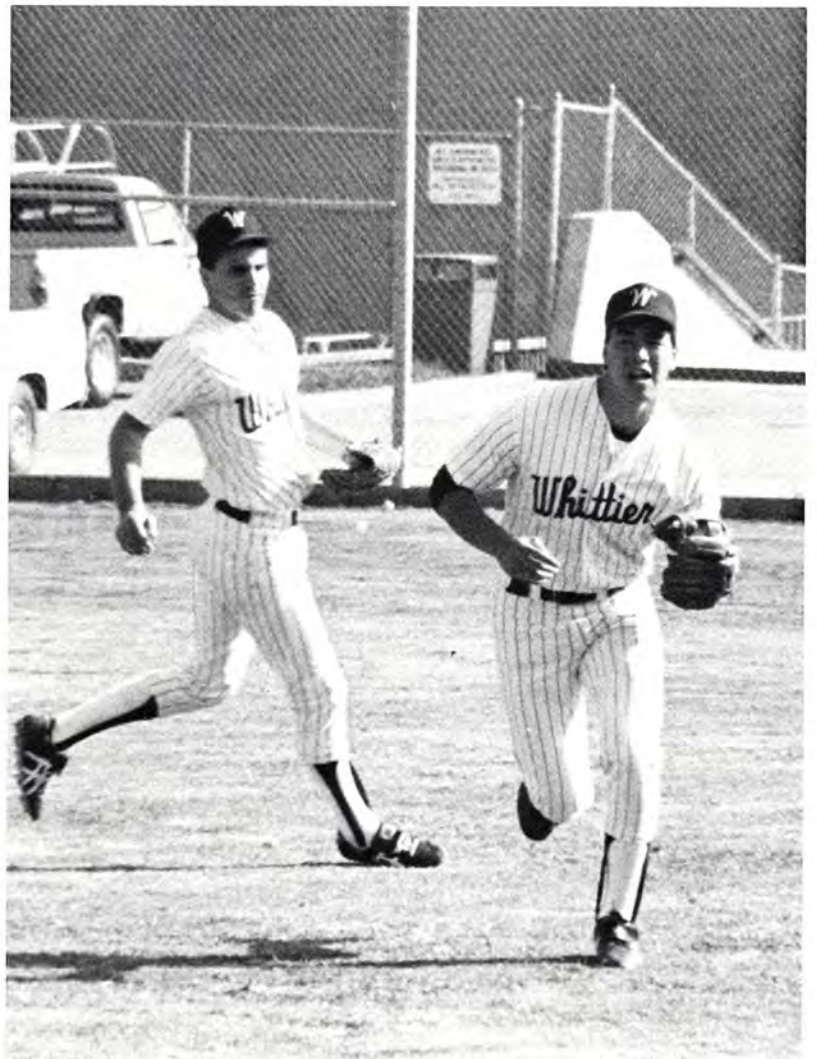


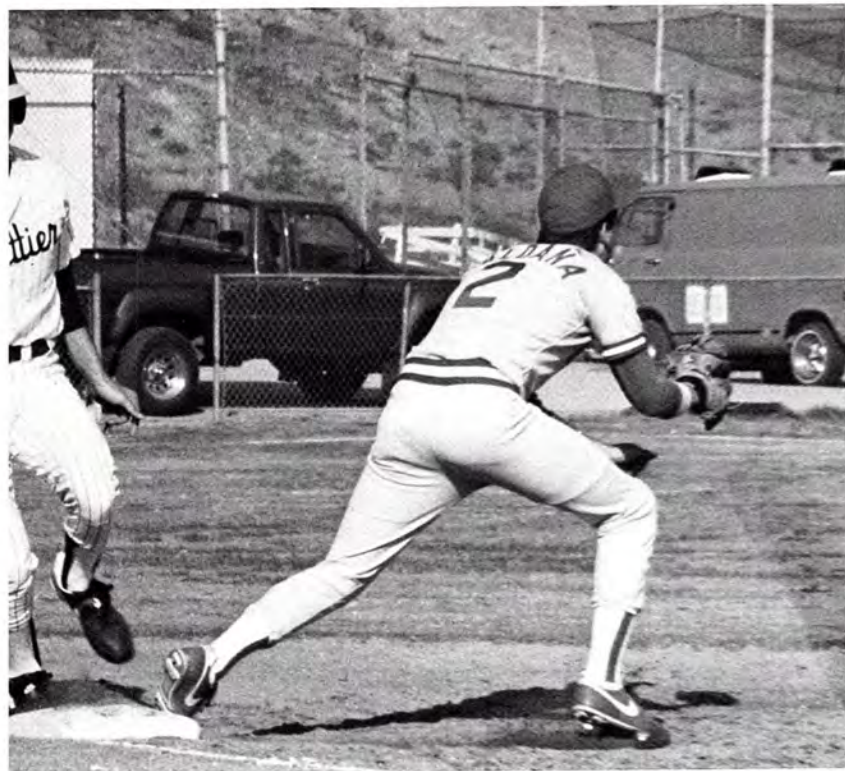
# Baseball



## THE 1987-88 TEAM

John Ashby  
Philip Beh  
Kyle Davis  
Anthony DeSa  
Adam Elberg  
Todd Fujimori  
Arnold Gil  
Scott Gill  
Troy Huseman  
Ramon Juarez  
Alika Kauleinamoku  
Robert Kittle  
David Loche  
John McGuire  
Fritz Murphy  
Yasuhiro Shiroma  
Brett Somers  
Mike Westmoreland  
James Worley





# Softball

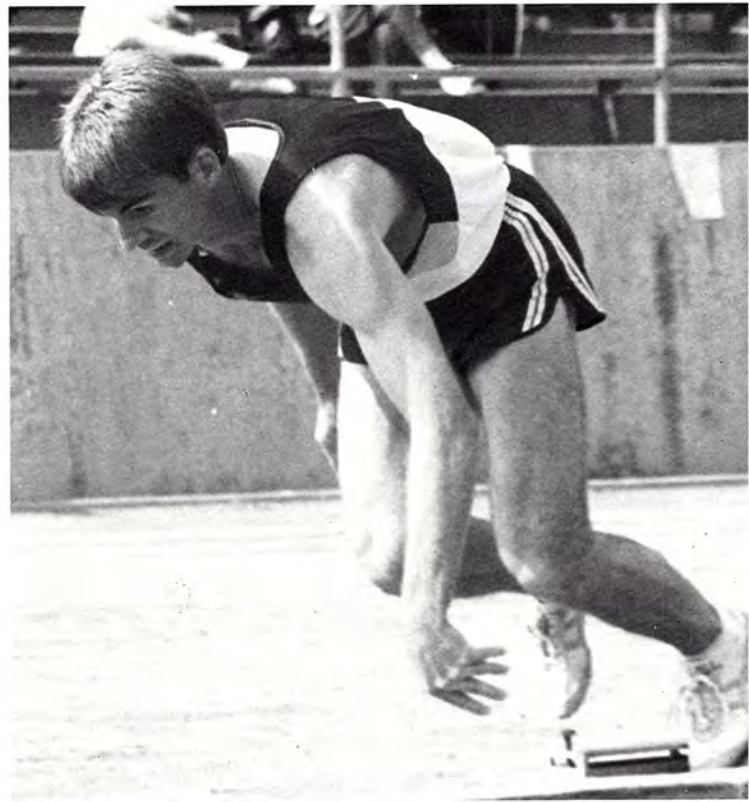


## THE 1987-88 TEAM

Tanja Amlie  
Monique Atwood  
Araceli Hernandez  
Pam Hill  
Joann Krohn  
Maria Martinez  
Paige Matsumoto  
Jamie Morrow  
Robin Roembke  
Julie Salcido  
Susan Smith  
Allyson Towersey  
Laural Wallace  
Janet Wheeler







## THE 1987-88 TEAM

Winston Aspinall  
Bruce Ball  
Elizabeth Bowman  
James Brake  
Chris Cabrera  
Valerie Cripps  
Neal Dalrymple  
Gretchen Geiger  
Wendy Guthrie  
Caitlin Guyan  
Michael Harris  
Sabine Hartmann  
Shana Jenner  
Alice Kodjababian  
Kwan Lee  
Robert Lopez  
Steve McKee  
Scott Mills  
Michael Montgomery  
Teresa Phelps  
Charles Pratt  
Leslie Rhodes  
Eric Stanley  
Paul Weitz  
Stephanie Wiggins  
Ian Yates



# Track



# Cross-Country

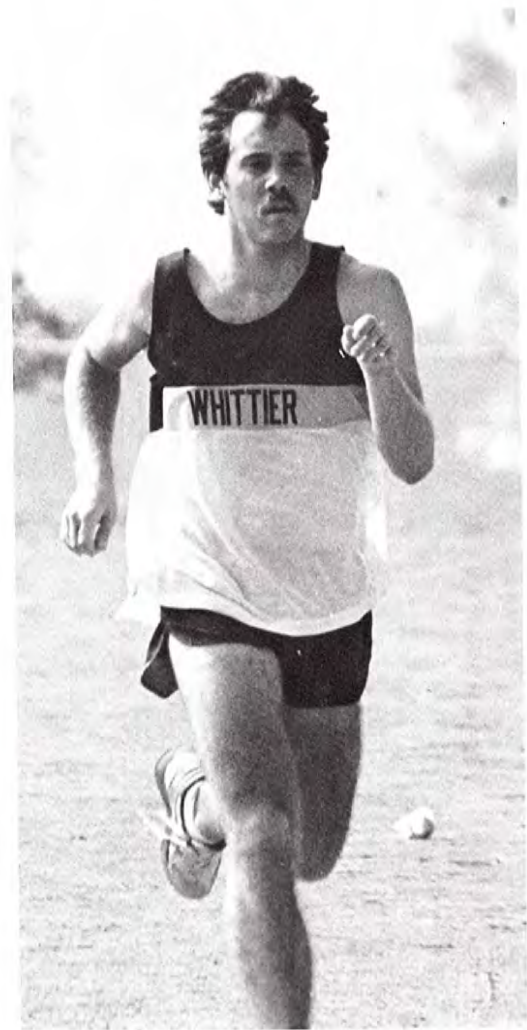
## THE 1987-88 TEAM

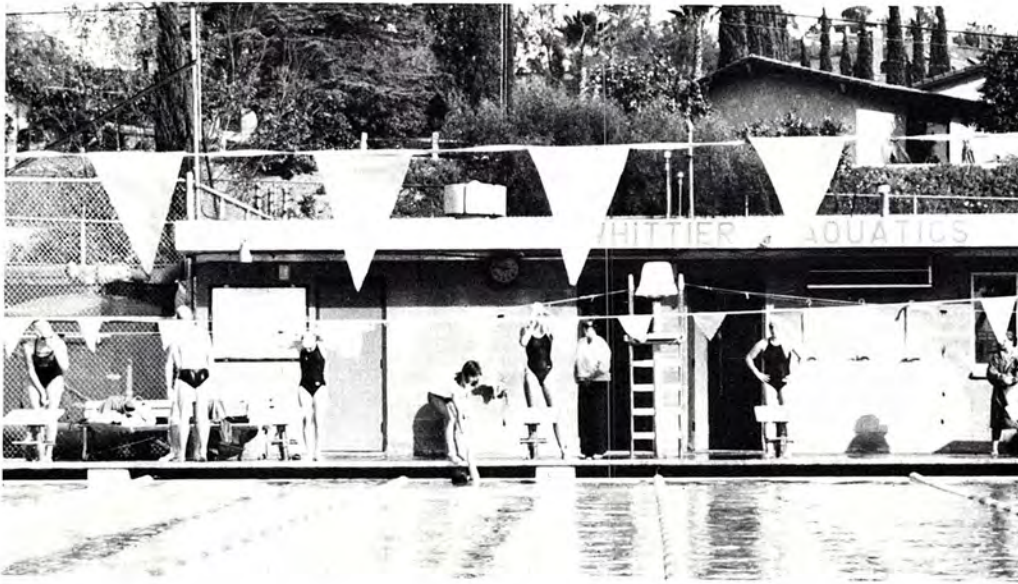
Darrin Blyden  
James Brake  
Kevin Burke  
Brackett Clark  
John Crowe  
Lisa Garman  
Suresh Gurung  
James Harrigan  
Sabine Hartmann  
Aamer Israr  
Judah Katz  
Todd Krajewski  
Evan Lewis

Tonya Lockman  
Clare Macaulay  
Brendan Meyer  
William Mitchell  
Michael Montgomery  
James Overland  
Burkeley Riggs  
Lenna Ruelas  
Andrew Runge  
Julie Rytand  
Sandra Scheiber  
Dai Tran  
Jason Wilson





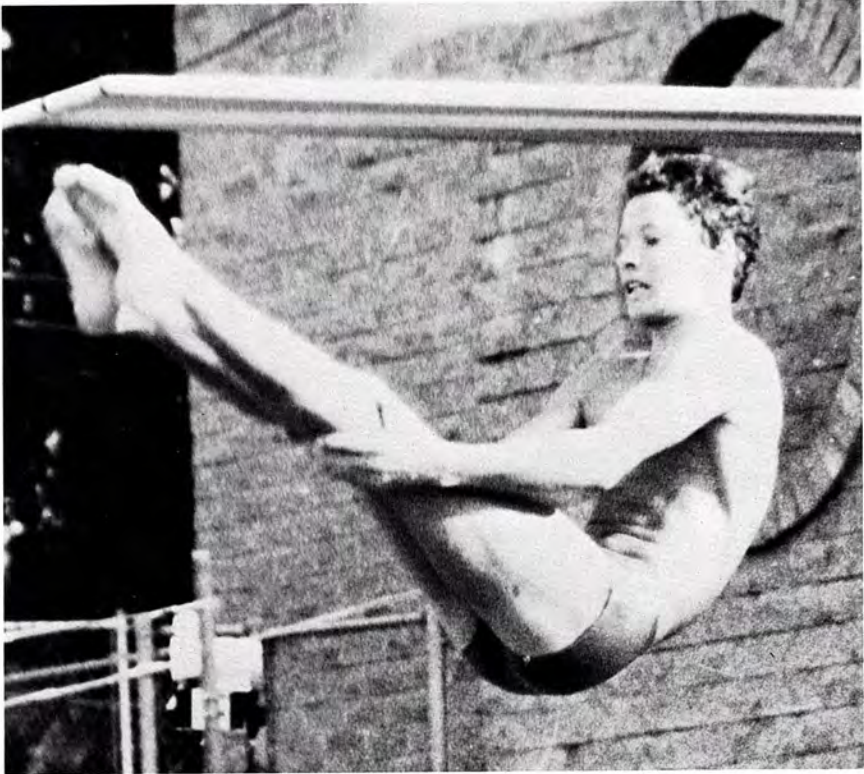
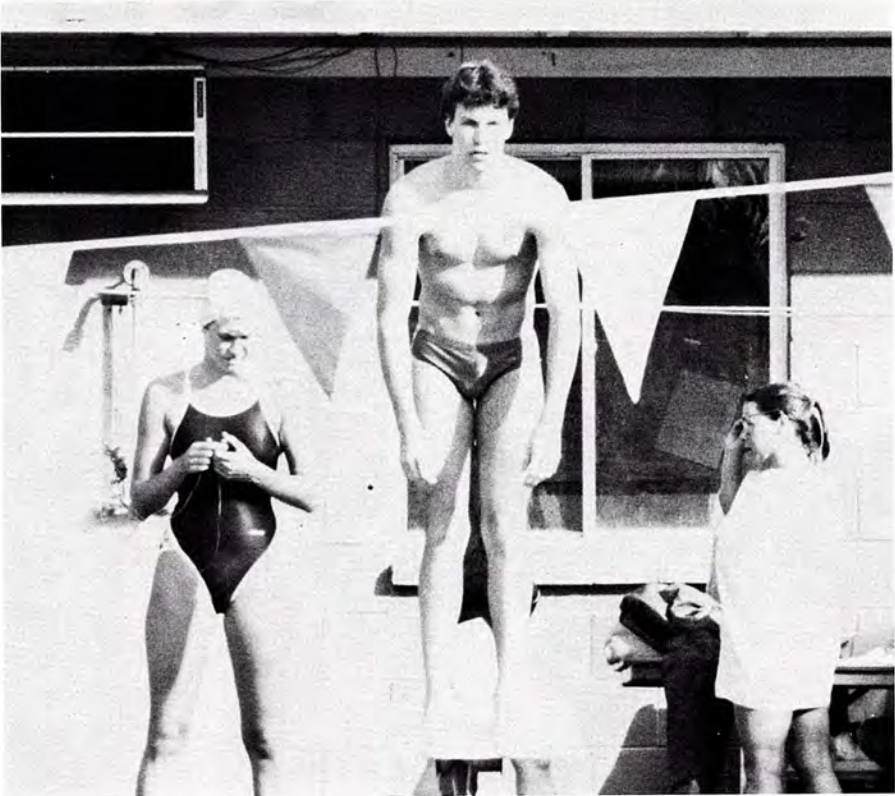


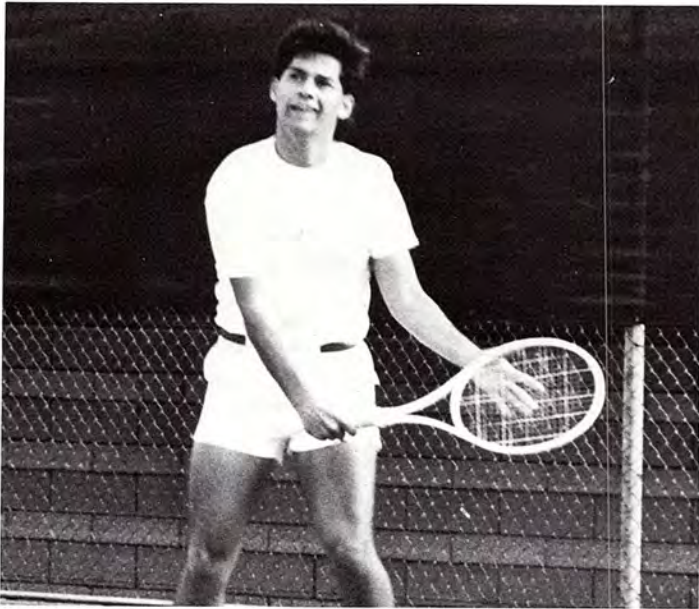


# WHITTIER



# SWIMMERS

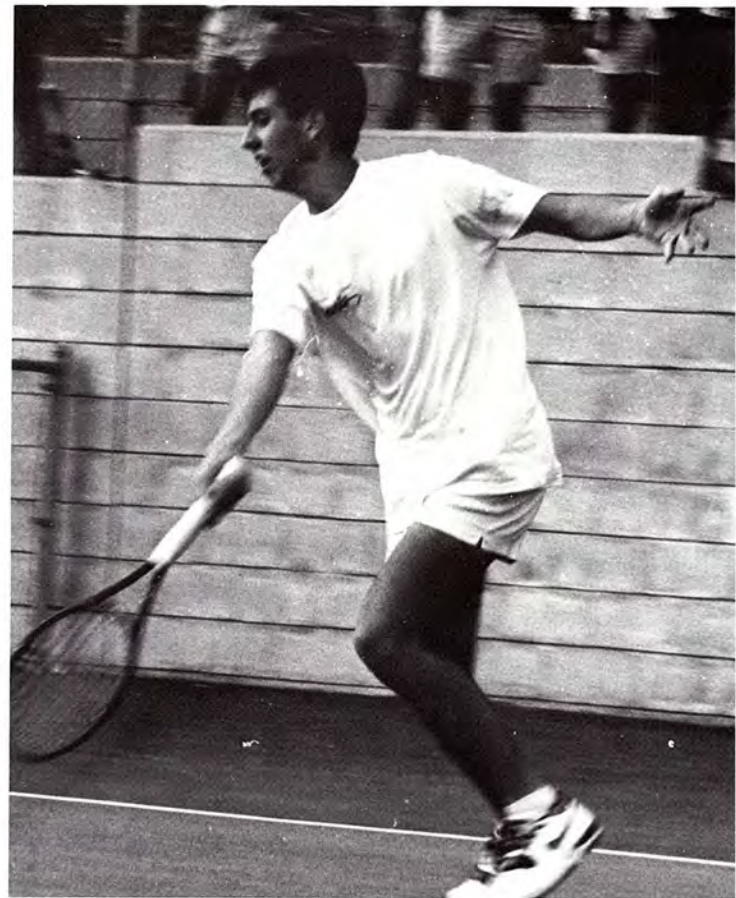


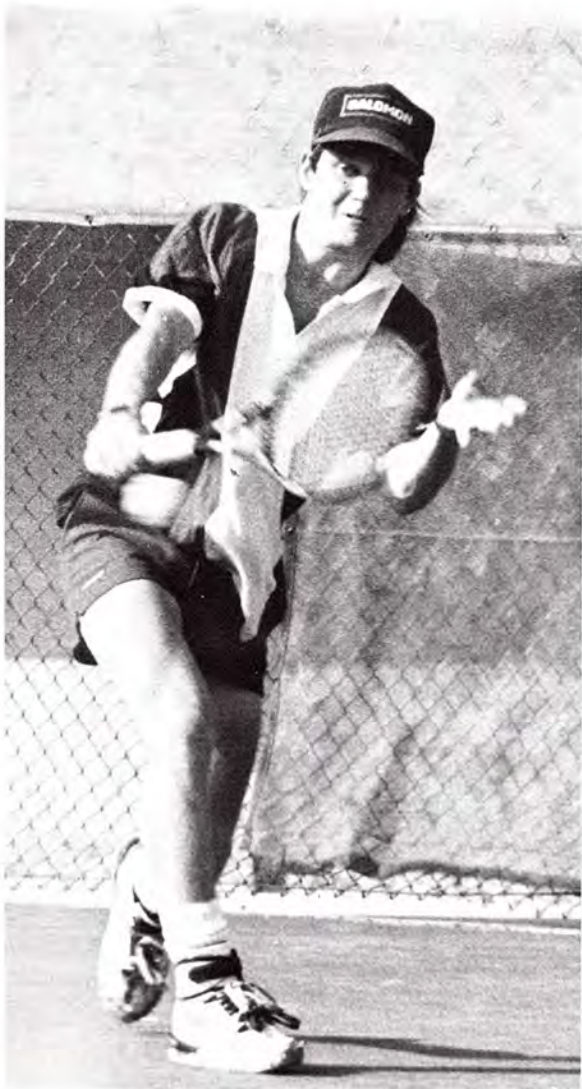
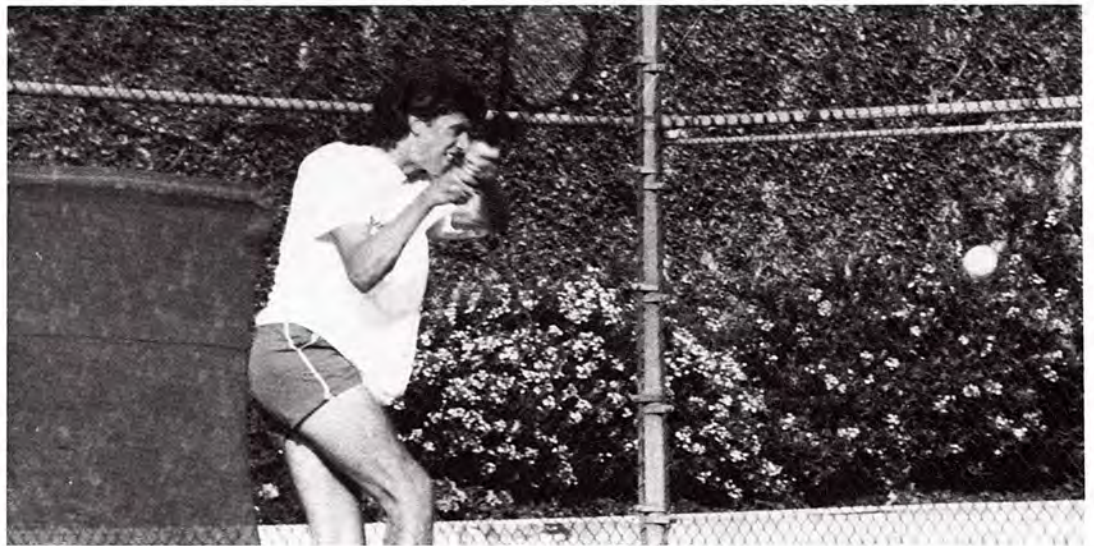


# Tennis

## THE 1987-88 TEAM

Anthony Almeida  
Stephanie Althaus  
Peter Baron  
Laurie Carr  
Elizabeth Cole  
John Crowe  
Per Davidson  
Jean Ettinger  
Thomas Forland  
Judy Francis  
Junjiro Ichihara  
Lisa Kealoha  
Beth Ladd  
Jennifer Lindholm  
David Mashaal  
Cheryl Mendoza  
Paula Molliconi  
Rommel Nacino  
Shelli Oye  
Chris Perkins  
Derek Price  
Philip Reiff  
David Smith  
Kimberly Taylor  
Jessie Vall-Spinosa  
Pete Weidenfeld  
Joel Whisler  
Marla Wolsky





# Athletic Trainers

Carol Azuma  
Debbie Semeliss  
Laurel Wallace  
Adam Elberg  
Jocelyn Erwin  
Pete Duncan  
Susan Smith  
D'Arcy Webster  
Nora Rivera

Holly Tuckett  
Joe Cropley  
Jeff Curley  
Dawn Schoenbien  
Gina Ricardo  
L. T. Wimberley  
Cathy Davitt  
Mark Reyna





- *Closing*
- *Uptown Life*
- *Whittier Earthquake*
- *Student Union*
- *Current Events*
- *Friends*
- *Fads and Fashions*
- *Message From The President*



---

---

A  
DAY  
IN  
THE  
LIFE



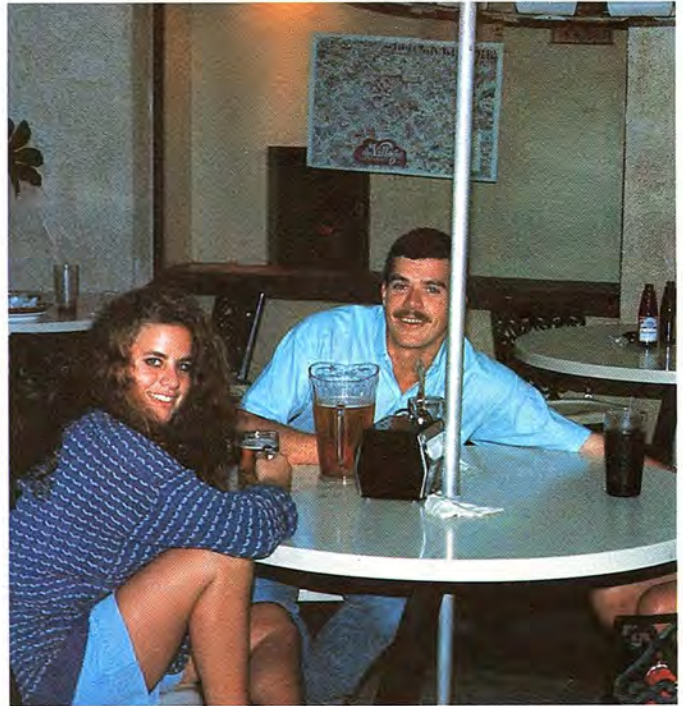
 losing

 losing

 losing

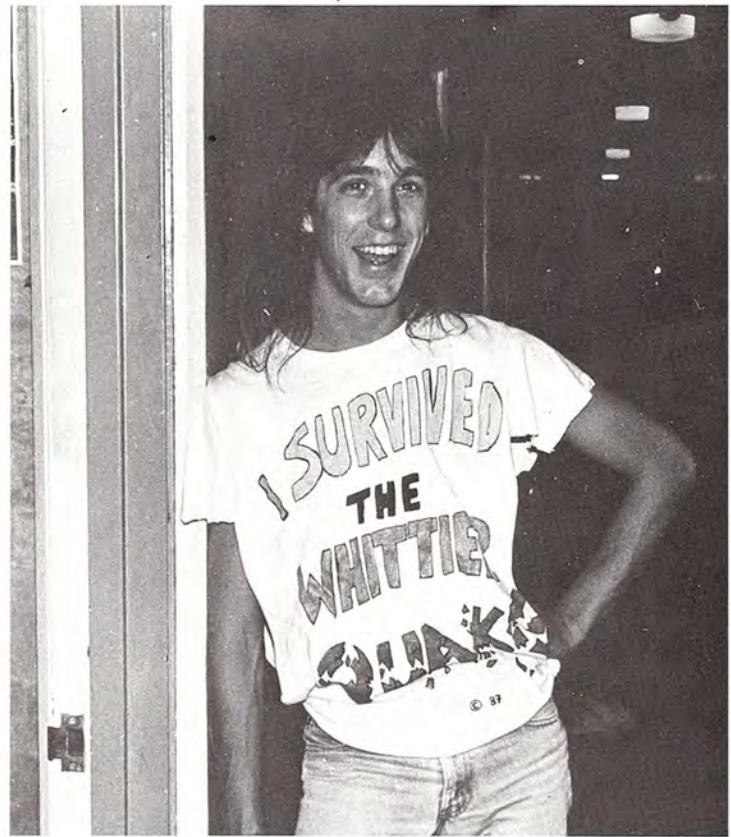
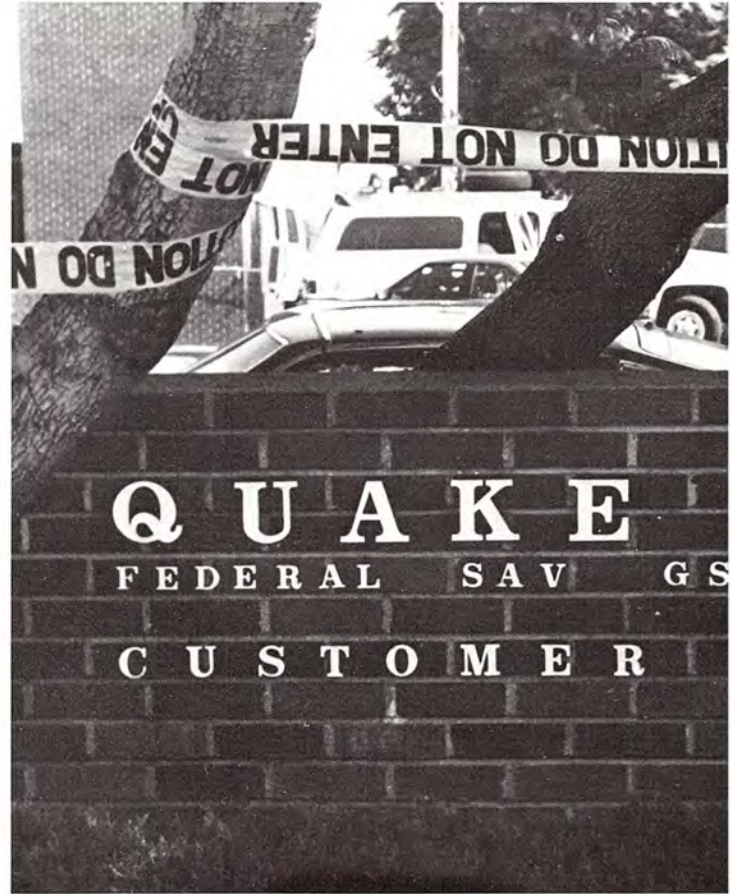
# A Hometown Flavor in Uptown Whittier

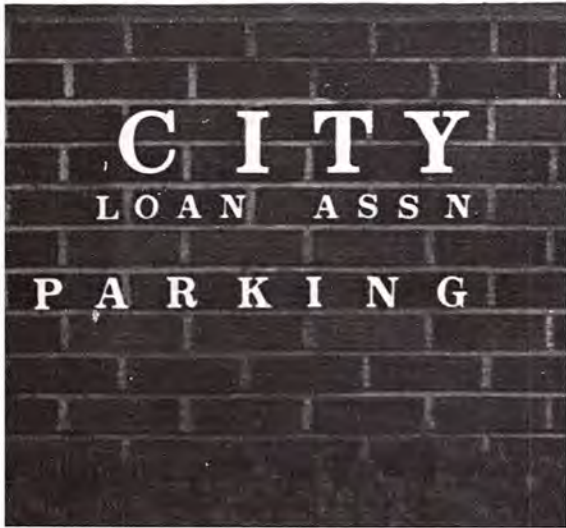
Village — The word brings images of tranquility, familiar faces, and old-fashioned buildings. Uptown Whittier, otherwise known as The Village, has these characteristics and more. As you walk along the brick sidewalks, you see the familiar faces of fellow students, shopkeepers, and the hotdog man with his cart. The Village is filled with bookstores, specialty shops, and restaurants with cuisine ranging from burgers at Bobs to pizza and pasta at Vitos and Dattilos to kebabs at Sibians. In the aftermath of the earthquake, the Village is being rebuilt. Places like Seagulls, a campus tradition, will be rebuilt. Seagulls will be located in the new Chateau Whittier complex. The Village is going to be better than ever.





# Earthquake: October 1, 1987





On the morning of October 1, at 7:45 a.m., the Whittier College campus was shaken by a 6.1 earthquake. The students of Whittier had gone the previous year without experiencing one, and for most (except possibly the native Californians) students it was the first that they had ever experienced. It startled many of the students, and it is probably something that they will never forget.

Classes were canceled for that day, and many of the students spent time calling friends and loved ones and/or getting calls from them. Others spent time looking around the area to see the damage. The college was lucky in the area of damage; the school suffered, for the most part, superficial damage; while uptown Whittier took a beating. The following Sunday another earthquake hit. This one occurred earlier in the morning (about 4:00 a.m.) and wasn't as strong, yet measured 5.5. This caused more damage and shook students up a bit.

Some students had never experienced an earthquake before, and were quite frightened by both. The student body, for the most part, had handled it well considering the circumstances. There were those who decided that the chance of another earthquake was too much for them, so they decided to leave Whittier College, yet they were very few in number.





# Student Union and The Spot



The Student Union lounge is a place that most students on campus have undoubtedly visited. The lounge offers many recreational activities which include foosball, air hockey, billiards, ping pong, video games, and a large-screen television (which usually features MTV when movies aren't being shown). You can find students occupying this place between classes, before and after lunch and dinner, and often into the evening. At times you can hear the occasional cry of outrage accompanied by the pounding of machines; however, the lounge is usually filled with an amiable atmosphere.

The Spot, which is located directly below the Student Union, is the local campus hamburger joint. It is a nice relief from the C.I. and its distinctive "cuisine," and has probably 'saved' more than one student. The food and the people are a nice change of pace.



# Current Events

CONDOM ADS ON T.V.?!?

Riots in Beijing

6.1 Earthquake Jolts L.A.

AIDS PANIC GROWS

Minimum Wage Increase to \$4.25

RIOTS IN SEOUL

FREEWAY SHOOTING: A TICKET OR A BULLET?

Bork Nomination to Supreme Court Rejected

Ginsburg Nomination to Supreme Court Rejected

ELECTION 88: WHO WILL FILL THE WHITE HOUSE?

T.V. EVANGELISM: GIVE ME THAT PRIME TIME RELIGION

Rather vs. Bush: "the Wimp Factor"

Gary Hart: "to Run or Not to Run"

March 28 US Troops Return From Honduras



Increased Conflict in the Persian Gulf

IRAN-CONTRA AFFAIR:

WHOSE SIDE ARE WE ON?

Lakers Win World Championship

Riots in Armenia

TOLL CHARGES IN THE PANAMA CANAL

Riots in Soviet Union

Kennedy Named New Supreme Court Justice

YEARBOOK EDITOR MISSING — FOUL  
PLAY SUSPECTED

WHITTIER COLLEGE RANKED 3rd IN NATION OF SMALL  
COLLEGES

German Teen Buzzes Red Square



# What Is a Friend?

A friend is one of the nicest things you can have, and one of the best things you can be. A friend is a living treasure, and if you have one, you have one of the most valuable gifts in life.

A friend is the one who will always be beside you through all the laughter and through each and every tear. A friend is the one thing you can always rely on; the someone you can always open up to; the one wonderful person who always believes in you in a way that no one else seems to.

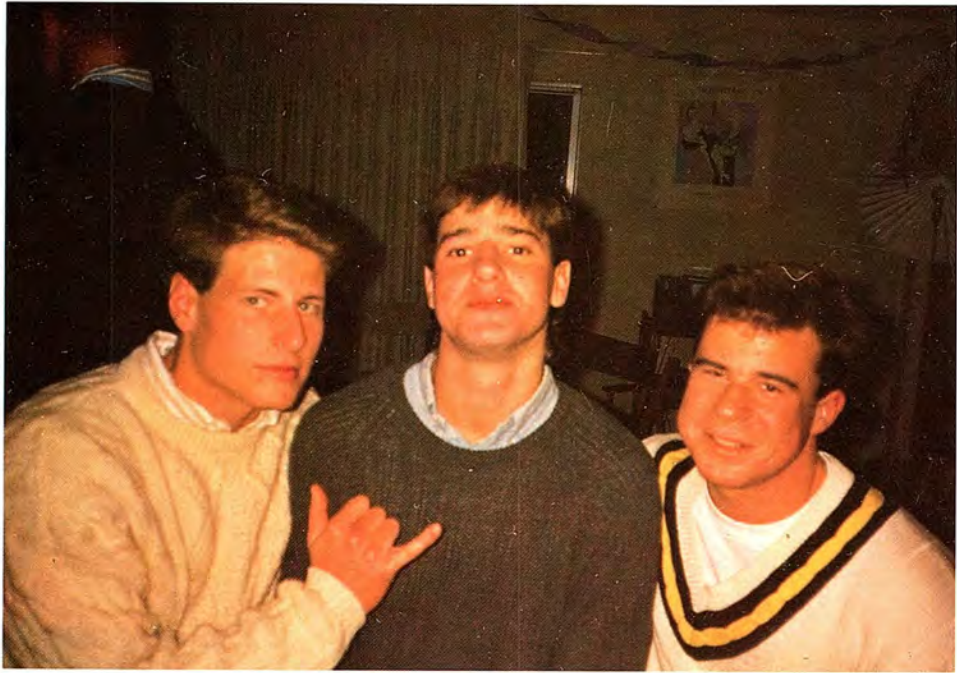
A friend is a sanctuary.

A friend is a smile.

A friend is a hand that is always holding yours, no matter where you are, no matter how close or far apart you may be. A friend is someone who is always there and will always — always — care. A friend is a feeling of forever in the heart. A friend is the one door that is always open. A friend is the one to whom you can give your key. A friend is one of the nicest things you can have, and one of the best things you can be.

— Collin McCarthy





# Fads and Fashions

SUZUKI SAMARI

Mountain Bikes

*Three Men and A Baby*

SAFE RIDE PROGRAMS

*L.A. Law*

THIRTYSOMETHING

*FATAL ATTRACTION*

Spuds MacKenzie

U2 Wins a Grammy

FRIENDSHIP BRACELETS

PEPPERMINT ELEPHANT

acid wash and tie-dye

“Just Say No”

# Whittier College Radio KWTR

VIETNAM FILMS

*Good Morning Vietnam*

*Full Metal Jacket*

SOAP OPERAS

*DAYS OF OUR LIVES*

*General Hospital*

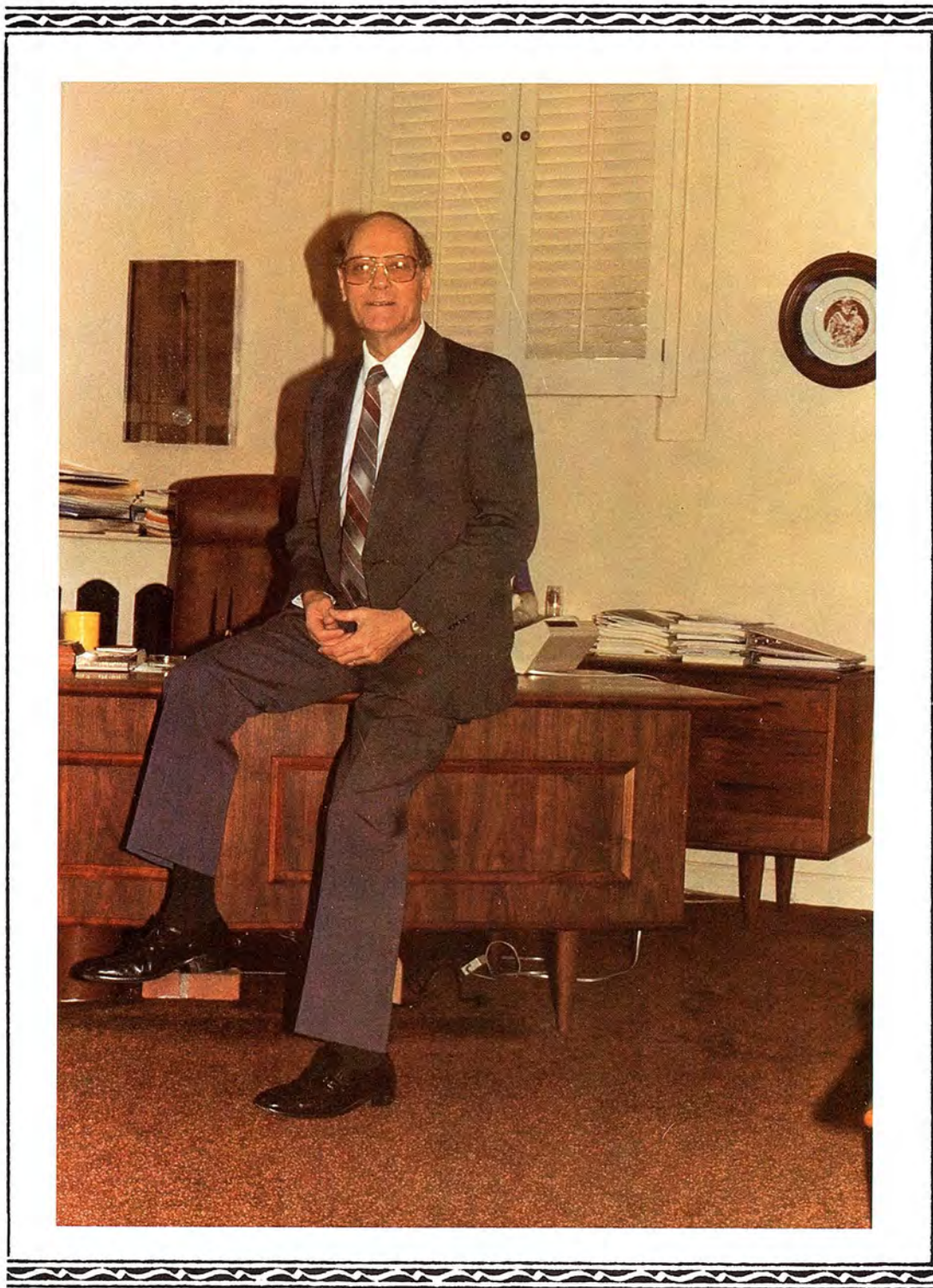
976 NUMBERS

CONVERSE HIGHTOPS



it's cool NOT to smoke

Red Onion Club



# Whittier College

Dear Friends:

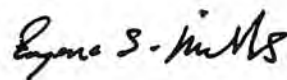
I have many pleasant memories of 1987-88 and of those who will graduate at the end of the year. While we were surviving the earthquake and completing our centennial celebration, I had the opportunity day by day to become personally acquainted with more and more students. There are some special friends in this class . . . unusually bright people, ambitious people, talented people and funny people. My memories bring together all of these characteristics and leave me with a wistful feeling concerning those who are departing the campus.

Those of us who will be staying on are proud of what you are and of what you will become in the years ahead. Frankly, we will miss you. Your leaving diminishes the college at the same time that it tells the world that we have succeeded in doing well what we are here to do . . . educating students one at a time.

The Class of '88 is the first one to graduate in our second century. That may not seem special at this time, but as the years go by I believe that each of you will find that distinction rather satisfying. I hope that you will feel some personal responsibility for the life and welfare of the college during the first half of the new century.

Remember your friends and your teachers and the challenges that you met here on the Poet campus. As you do so, remember also that, however far you travel and whenever you may return, you will find "The Rock" firmly planted on the front lawn. Fortunately, some things endure.

Good luck to all of you!



Eugene S. Mills

ESM:cr

# A Note From the Editor

Working on the *Acropolis* has been a great experience; a trifle frustrating at times, but worth-while nonetheless. A year in our lives has been captured in this book, and the task was such that I could not have done it alone. Therefore, I would like to extend my thanks to:

My staff, especially DAVE HURON, for locking himself in the darkroom for hours on end, and RENE RAMOS, for drawing and redrawing so many layouts without pulling out his hair.

My assistant editor, DOUG KOTKIN, for keeping me more or less sane, and most of all for being there as a friend.

My advisors, VAUGHN KING and FRED ROCHA, who did a wonderful job advising the staff.

CANDACE WARD and Taylor Publishing; Roz was right — you are the best yearbook representative “in the cosmos.”

And finally, my housemates and friends for listening to me scream out my frustrations.

I couldn't have done it without you — again, THANKS.

Carrie Durden  
Editor in Chief





CONGRATULATIONS  
*and*  
BEST WISHES  
*to the*  
GRADUATING CLASS  
*of*  
1988  
WHITTIER COLLEGE



James P. Fitzgerald, M.D.  
Robert H. Goebel, M.D.  
Marvin H. Kantor, M.D.  
Samuel S. Kurohara, M.D. Ph.D.

Hours: 9-7 — Sat. 9-6 — Sun. 9-3  
 "A LITTLE BIT OF ITALY"  
**LA PRIMA DELI AND BAKERY**

14114 E. Lambert Road — Whittier  
 693-5617 \* 945-2768

**The Best Italian Bread in Town**  
**Made Fresh Daily**



We Specialize in Sandwiches,  
 Pizzas, Ravioli, Lasagna, Spaghetti,  
 4' — 5' — 6' Sandwiches, Party  
 Trays  
 "OH MAMA MIA"

RICHARD SERGE — Owners — EDITH COOPER



Walt  
 and  
 Barbara  
 Mason  
 (213) 945-2961

7201 GREENLEAF AVENUE, WHITTIER, CALIFORNIA 90602

"SERVING THE WHOLE CHILD" K-8



**St. Mary of the Assumption School**

7203 South Newlin Avenue  
 Whittier, Ca 90602  
 (213) 698-0253

**ST MARY'S OF THE  
 ASSUMPTION  
 CATHOLIC COMMUNITY**

Extends Best Wishes to  
 the Students of  
 Whittier College

Redemptionist Priest & Brothers  
 7215 S. Newlin  
 Whittier, CA

EVERYTHING PHOTOGRAPHIC

BINOCULARS

**Monte's CAMERA SHOP**

6533 GREENLEAF AVENUE  
 WHITTIER CALIFORNIA

MONTE WICKER

(213) 696-8842

WHITTIER  
 VILLAGE REALTY



**ED ORTIZ**  
 ASSOCIATE BROKER

MEMBER OF



7041 BRIGHT AVE.  
 WHITTIER, CA 90607  
 BUS. (213) 698-9564  
 RES. (213) 693-9924

# AUTOGRAPHS



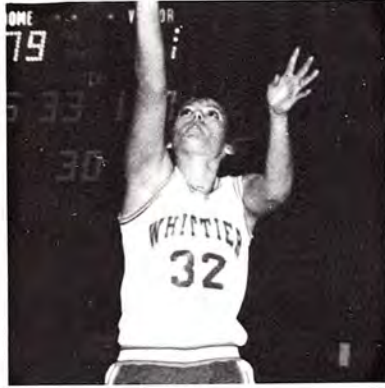
A  
DAY  
IN  
THE  
LIFE



S  
T  
U  
D  
E  
N  
T  
S



# AUTOGRAPHS

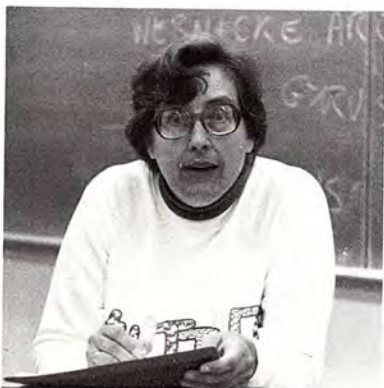
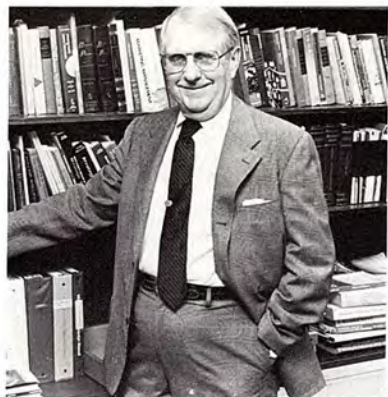


A  
DAY  
IN  
THE  
LIFE



A  
T  
H  
L  
E  
T  
I  
C  
S





# AUTOGRAPHS

# A DAY IN THE LIFE AT WHITTIER COLLEGE











hittier



college



988