



Whittier College
Wardman Library
Poet Commons

Acropolis (Yearbook)

Archives and Special Collections

1949

1949 Acropolis

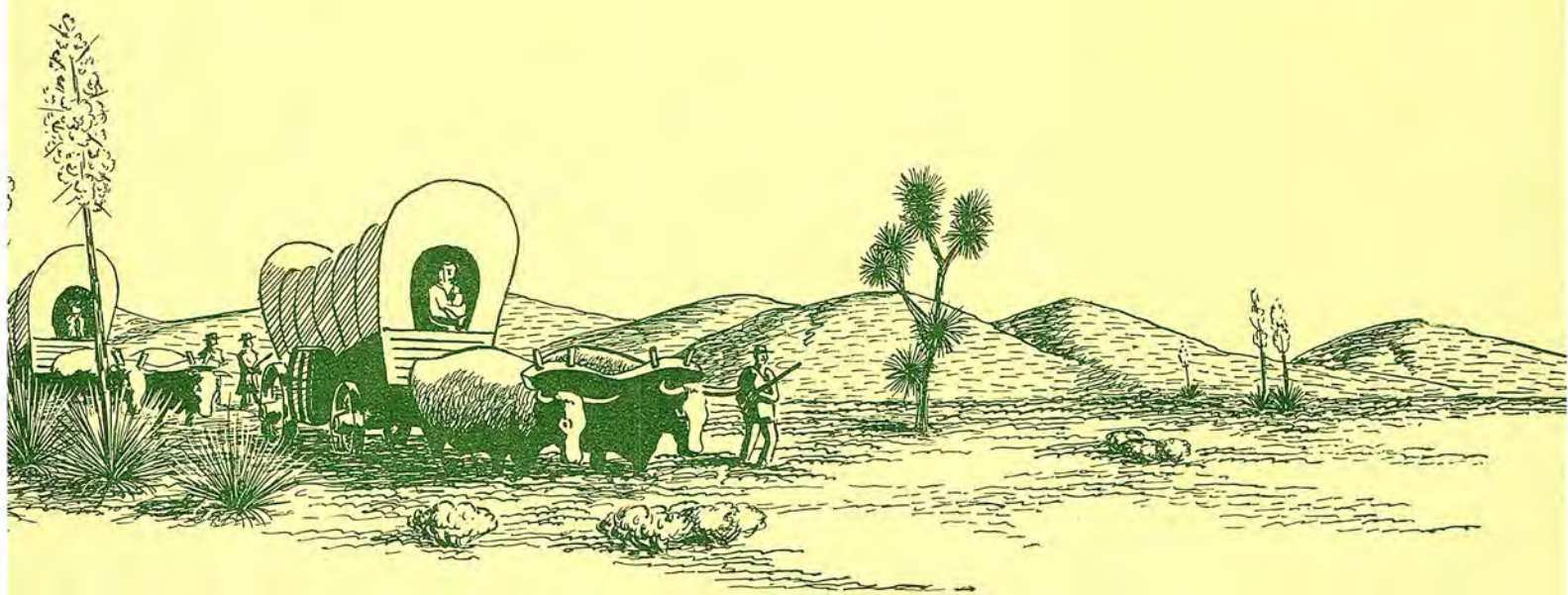
Whittier College

Follow this and additional works at: <https://poetcommons.whittier.edu/acropolis>

49

ACROPOLIS





ACROPOLIS



1 9 4 9



Acropolis 1949

Annual Publication of Whittier College

EDITOR . . Bill Keim

BUSINESS MANAGER . . Richard Deihl

*From the citied East... toward the virgin West
came the gold seekers*







But they were too hard on the earth





... and gone too soon was the bonanza



With a new respect.



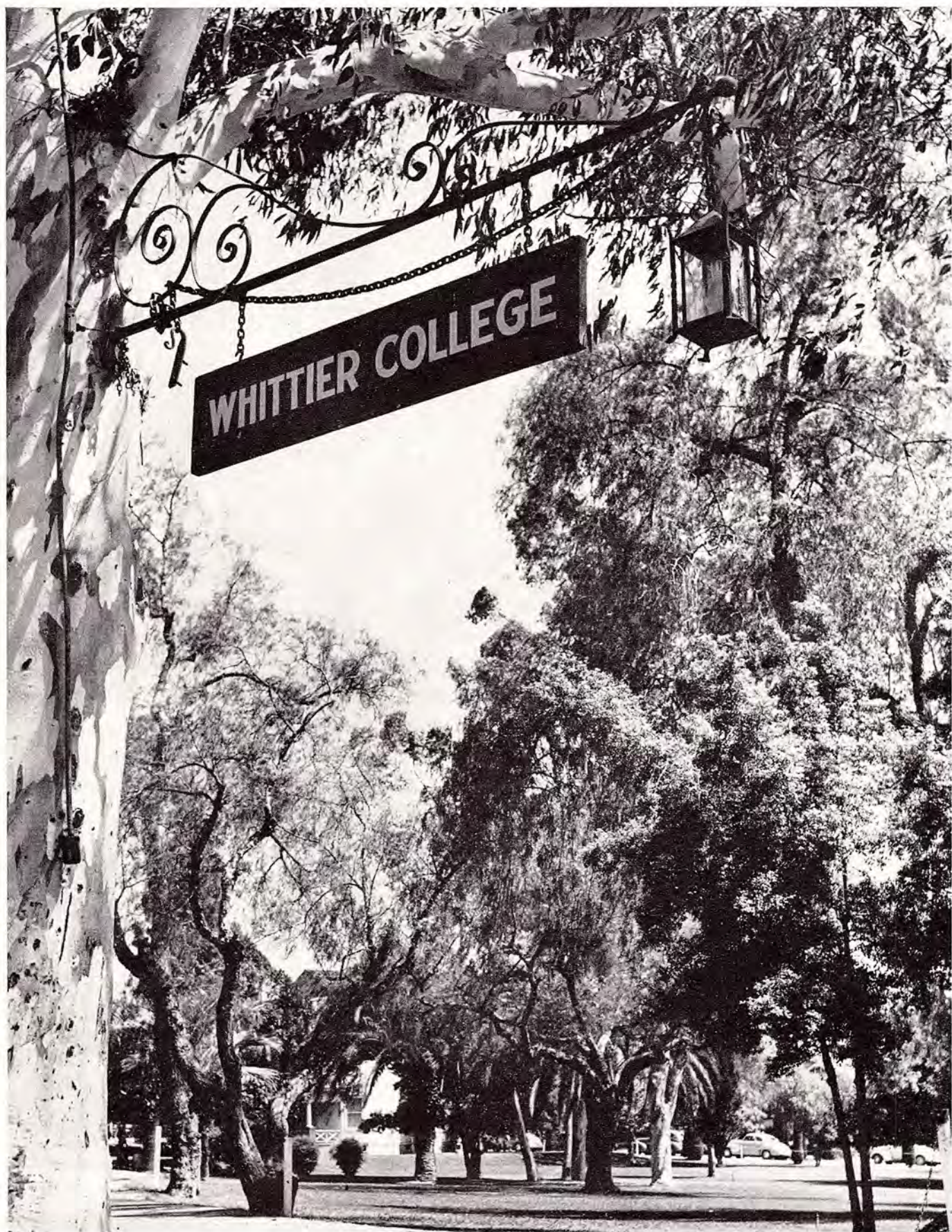
seekers and those who followed turned to the land





*this time to love it,
and to discover its true wealth*





*We at this College salute these seekers, for we
share in their heritage, and we also search . . .*



Class of '52

Arriving on campus as a relatively uncoordinated group, the Freshmen are traditionally the butts of endless jokes and pranks; yet they possess a friendly spirit which enlivens the school from one end to the other. As the Class of '52 got acquainted with the campus and settled down to the college routine they entered into school activities with real enthusiasm. At the Kangaroo Court the spirited Frosh proved that justice can work two ways as they traded blow for blow with the Soph jurors. The traditional Frosh-Soph Brawl ended in a tie for the first time in history. During the year the class carried on an active social program and supported college activities, proving itself a worthy successor to the preceding classes at Whittier College.



Mob scene on Hadley Field

Shower bath for the Frosh



Dr. Nerhood integrates



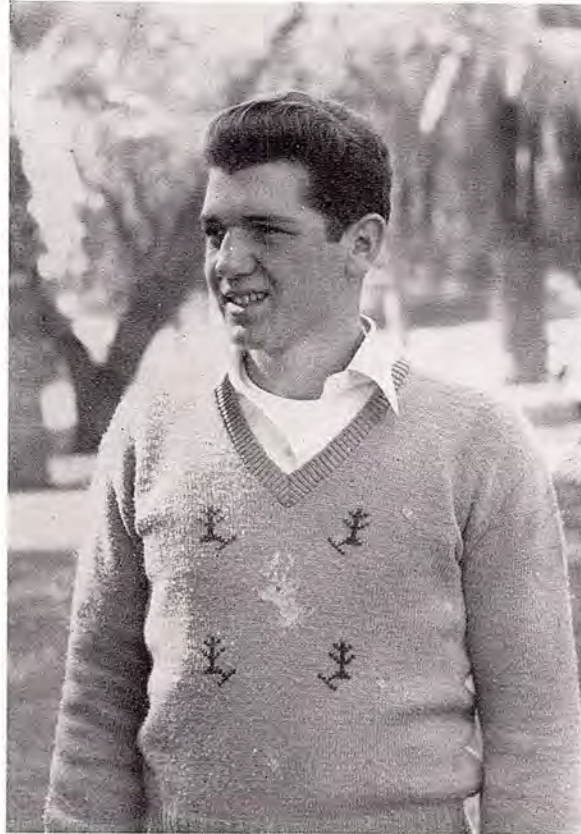
Swimming lesson for the Sophs





First semester officers—left to right: E. Knox, R. Marshall, C. Coomer, M. Lima, S. Raddon.

Frosh Exec



MICKEY LIMA



RUSTY MARSHALL

Heading the first semester frosh exec was friendly, dynamic RUSTY MARSHALL. Rusty was a real go-getter as he directed frosh activities and molded the newcomers on campus into a unified, spirited group. Vice president MICKEY LIMA could always be counted on to help out, and CAROL COOMER did a good job as secretary. BETTY KNOX kept the treasury straight, and SUSIE RADDON planned and carried out the frosh social events. During the second semester a new set of officers was installed. ROGER COOPER took over the president's gavel and carried on frosh affairs with characteristic enthusiasm and vitality. His cabinet included ROD BURROUGHS, vice president; CAROL CHAFFEE, secretary; JO AHLQUIST, treasurer; and NADINE CASTOR, social chairman, all of whom cooperated nicely to round out a very successful first year for the Class of '52.



The Freshman Squad—Front row, left to right: Coach Fair, Kienholz, Walters, Wagoner, Bailey, Rasmussen, Thornton, Coach Richardson. Second row: Macrorie, Lima, Day, Much, Foltzer, Benedetti, Love. Third row: Wellington, Kelsch, Cory, Myers, Meahler, Nickrel, Sucksdorf. Fourth row: Coach Chandler, Babcock, Fazio, Chapman, Burroughs, Morgan, Axe.

This year's Frosh team, coached by Kenny Richardson, was characterized more by good, balanced teamwork than by any standout stars, although a number of good varsity prospects were developed. Playing a schedule of hard fought games, they placed third in the conference and won four of their seven contests. The results were:

Frosh	7	Mt. San Antonio	6
	41	Caltech Frosh	0
	7	Occidental Frosh	13
	14	Palomar J. C.	0
	13	Pomona Frosh	21
	0	Pierce J. C.	32
	21	Redlands Frosh	14



Squad



Shirt-tail tackle by Chapman



KENNY RICHARDSON

Fazio punts out of danger



Burroughs with the ball



Class of '51

An energetic executive committee under the leadership of president BEN TREGOE made the year an active one for fun-loving Sophomores. GUS WISE did a great job in promoting class doings from the vice presidential spot, and PAT PAGET was a helpful and efficient secretary. Treasurer BARBARA BOLTON provided many fine ideas and suggestions, while credit for the success of soph social activities goes to their conscientious social chairman, DORIS STRANDBERG.



BEN TREGOE, Sophomore president, is noted for his scholastic ability as well as his consistent good temper and sound judgment. His sensible, imaginative leadership sparked the members of the Class of '51 to successes which mark them as future school leaders.





PAT PAGET



BARBARA BOLTON



DORIS STRANDBERG

Sophs ponder over Sir Esme



MALCOLM WISE



Freshman "Who's Hula"—E. Barton

Sophs serve seltzer at Kangaroo Court



Sophs

Men vs. Sack



The Soph Social—Is everybody happy?



Class of '50

The Junior Class executive committee was topped by big, hard-working LARRY SNYDER, who guided Junior activities throughout an unusually successful social and academic year. Larry, a potent Poet basketballer, handled the job of class president with precision and drive, making the Class of '50 an influential force in student body activities. KEN CHAMBERS played an important part in the vice presidential spot, and FLORALIE ROGERS was an efficient and helpful secretary. The class treasury was capably handled by WALLY GRESCH, while MIKKI FOSSUM worked tirelessly to plan and direct the many social events sponsored by the Junior during the year.



WALLY GRESCH and MIKKI FOSSUM



KEN CHAMBERS and FLORALIE ROGERS

LARRY SNYDER
Junior Class President



Campus memories . . . Founders on the hill

Social



The Junior-Senior Party
—big financial operations



Poets incognito at the Mardi Gras dance

Although the battles with Significs and the early morning sessions with Doctors Smith, Nerhood, and Heming were over, the Juniors found plenty to keep them busy as they worked towards their college degree. The social year, too, was far from dull. Highlights among the various class activities were the Mardi Gras masquerade dance, at which many weird and original costumes were displayed, the Junior-Senior Party, the all day Snow Party, and the long-to-be-remembered Junior-Senior Prom at the Hollywood Riviera Country Club.



Upper-classmen dance in Provident



Class of '49



Graduation! Caps and gowns under the eucalypti mark the culmination of the college career. Years of planning and study fade into the past as the problems of the future loom before us. Our stay at Whittier College is over; but the friendships we have made, the affection we feel for our Alma Mater, and the memories of the campus . . . our favorite professors, our toughest classes, our best games and dances, all the fun we've had . . . will never fade from our hearts. Like many classes before us and many others to follow, we must face the challenge of the future; but it will be with the recognition that our class, the Class of 1949, has left a firm impression in the history of Whittier College. We will not soon be forgotten, nor will we soon forget.



CHARLIE HALL
Senior Class Prexy



The days went fast for the Seniors; the final classes . . . exams . . . the last-minute rush before graduation . . . and then the Class of '49 was history. But the year had been a full one. Members of the class were busy in various important student body offices setting a fast pace for the underclassmen. Senior class affairs were under the direction of Senior president, popular, level-headed CHARLIE HALL, a top Poet football and baseball man. Vice president WARREN KNOX headed the exec committee, which included HOPE STICKNEY, secretary, BOB ARMSTRONG, treasury boss, and JEAN DICKY, who directed Senior social events, including Senior Week activities, the Christmas Party, and the Senior Beach Outing.

Senior Exec—left to right: H. Stickney, W. Knox, J. Dickey, B. Armstrong.

Prominent Poets



Each year comes the time for voting for Prominent Poets. They are chosen on the basis of general personality, service to the school, participation in student body affairs, and popularity. This year, as usual, we are very proud of our Prominent Poets.

CHUCK DEPUE—A.S.W.C. Athletic Representative . . . Rally committee Chairman . . . always a friendly grin . . . Social Chairman Orthogonian Society.

Lower Left, JEAN DICKY—A.W.S. Secretary . . . Senior class Social Chairman . . . Sponsor . . . President Metaphonian Society . . . always busy . . . President inter-Society Council.



HOPE STICKNEY—A.S.W. Secretary . . . A.W.S. Treasurer . . . Sponsor . . . Athenian . . . Soseco . . . well liked gal.

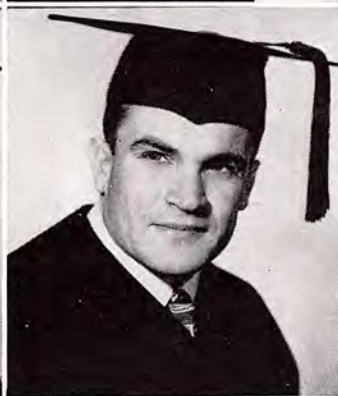
Grads



R. ARMSTRONG

P. AULENBROCH

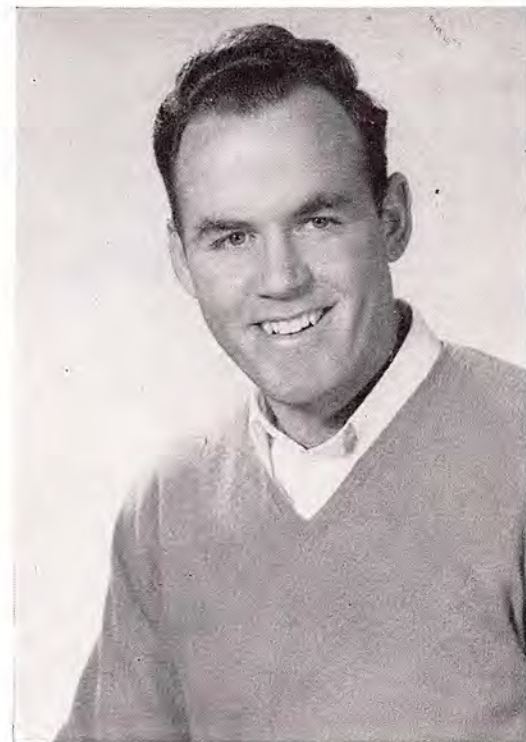
J. BALDWIN



W. ANDERSON
B. BARTLESON

J. ARANGUREN
F. BARTON

CHARLIE HALL—A.S.W.C. Athletic Representative . . . Franklin Society Vice President . . . active on the gridiron . . . Executive committee . . . Baseball captain . . . Senior Class president . . . Who's Who.



E. BATES
J. BLAKEMORE
C. BLOOM
R. BOUCHER

J. BELL
V. BLANK
R. BLURTON
W. BOWMAN



J. BARTON
J. BERTRAM

M. BASS
P. BERTSCH

A. BATES
D. BILLHARDT





W. BOYD
J. BRITTIAN

G. BRACE
C. BROADY



D. BRANCA
R. BROWN
G. BUCK



W. BRANCA
R. BROWN
R. BURCH
C. CASJENS

G. BRAY
W. BROWN
E. CARTMELL
J. CHENEY

HALL—Editor 1948 Acropolis . . .
nian President . . . Sponsor . . . Man-
; Editor Acropolis . . . Exec. Com-
e . . . Soseco . . . song leader . . .
's Who.

BILL KEIM—Business Manager 1948 Acropolis . . . active in college theatre . . . Social Science and Constitution Coach . . . Exec. Committee . . . Lancer Society Vice President . . . Editor 1949 Acropolis.

G. CLEAVELIN
S. CLEMENTS
L. CROW
E. DANA



J. CONDON
B. CROWL

K. CORY
G. CROWL

M. COVINGTON
G. CUNNINGHAM

T. CRAWFORD
H. CURTIS



R. DEEDON
 DELEISSEGUES
 R. DEIHL
 M. EASTON

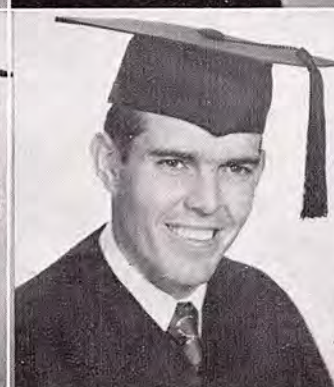
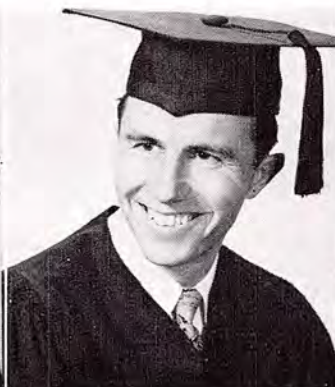


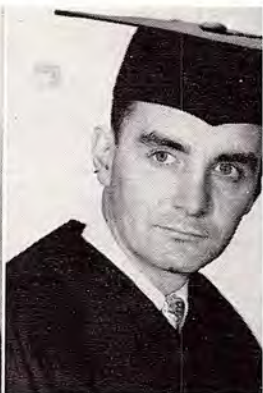
C. DELLINGER
 G. DOWELL
 J. EDBORG

G. DENNIS
 B. DUFF
 J. ELIAS

C. DE PUE
 B. DUKES
 R. ERBE

J. DICKY
 M. DUNMAN
 T. FACKRALL



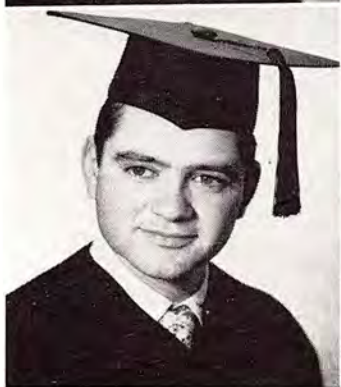
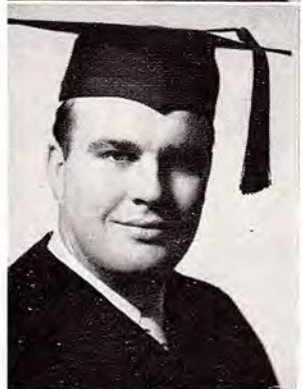


R. FLAVIN

A. FLETCHER

D. FLYNN

R. FREEBORN



M. GOFF

R. GOODNIGHT

J. GOGGIN

E. FLAUS

D. GOULD

E. HADLEY

B. GRAHAM

B. HAGLER

A. GREENE

C. HALL



S. GARRO
J. GIRTON



MARGARET KIMBER — Palmer Society
Social Chairman and Vice President . . .
Cap and Gown . . . Sophomore Class Social
Chairman . . . always on the run . . . viva-
cious . . . A.S.W.C. Social Chairman . . .
Sponsor . . . Who's Who.



E. GRIFFITH
J. HALL

W. GRISHAM
T. HALL

J. GROBE
C. HAMILTON

N. GRORUD
J. HANSON

H. GUENTHNER
P. HARDEN



J. HARMON
D. HARPER
B. HARRINGTON



E. HARRIS
A. HARSHBARGER
M. HART

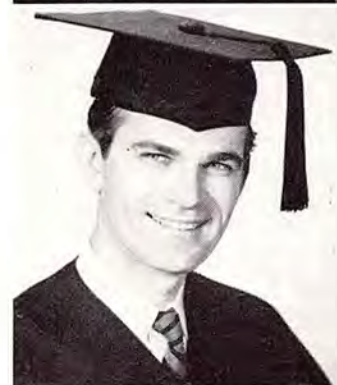


LEE KULZER — A.S.W.C. Treasurer . . . Orthogonian Society . . . popular guy around campus . . . Captain 1948 football squad . . . Who's Who.

Y. HOUZE
H. HOWELL



B. HOOKER
C. HULSE



J. HARTWICK
H. HATTEL
B. HEARD



B. HEGGEM
W. HEIMERDINGER
C. HEISLER



P. HOLT
R. HUMISTON



M. HODSON
W. JACKSON



R. HODSON
A. JACOBS



W. HILL
D. JENNINGS



W. HICKMAN
B. JOHNSON





G. KLUG
W. KNOX

F. KITCHEN
E. KOENING

M. KIMBER
J. KONNO

G. KERSHNER
C. KRUEGER

H. KENWORTHY
D. KRUEGER

L. JOHNSON

E. JONES

L. JONES

S. JONES

P. JORDAN





W. KEIM
L. KULZER

J. KAHLER
C. LaRUE



BILL MOORE—Orthogonian . . . our pride and joy on the basketball team . . . Captain 1948 Conference co-champs, All-conference Forward . . . Knight . . . Captain basketball team.

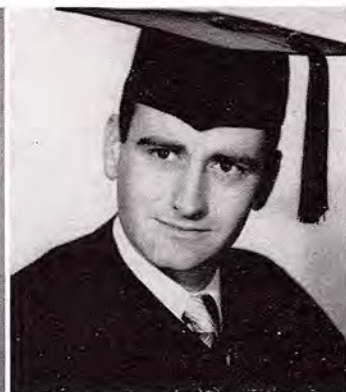
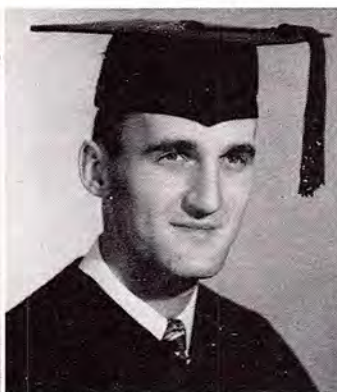
F. LEIGH
J. LIGHTNER

K. LAWSON
B. LOGAN

H. LAUGHEAD
V. LONG

D. LAUDERDALE
I. McCAUSLAND

J. LaRUE
E. McCLOUD





W. McLOCHLIN



G. McKAY



R. MACLEAN



L. MAGNUSSON



B. MARSHALL

D. MASTAIN

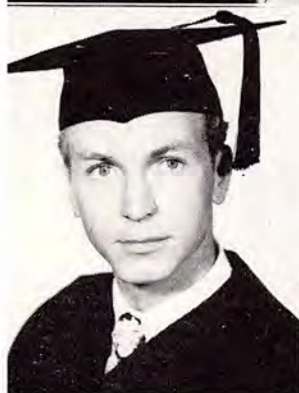
G. MILLER

D. MINTZ

P. MECKNA

B. MENKE

K. MITCHELL



CARLEY PATTEN—A.S.W.C. Women's representative . . . Secretary Sophomore class . . . married to Jack . . . Cap and Gown Chairman . . . Sponsor . . . Soseco Secretary . . . President Palmer Society . . . Who's Who.





L. MORRISON
C. MULFORD

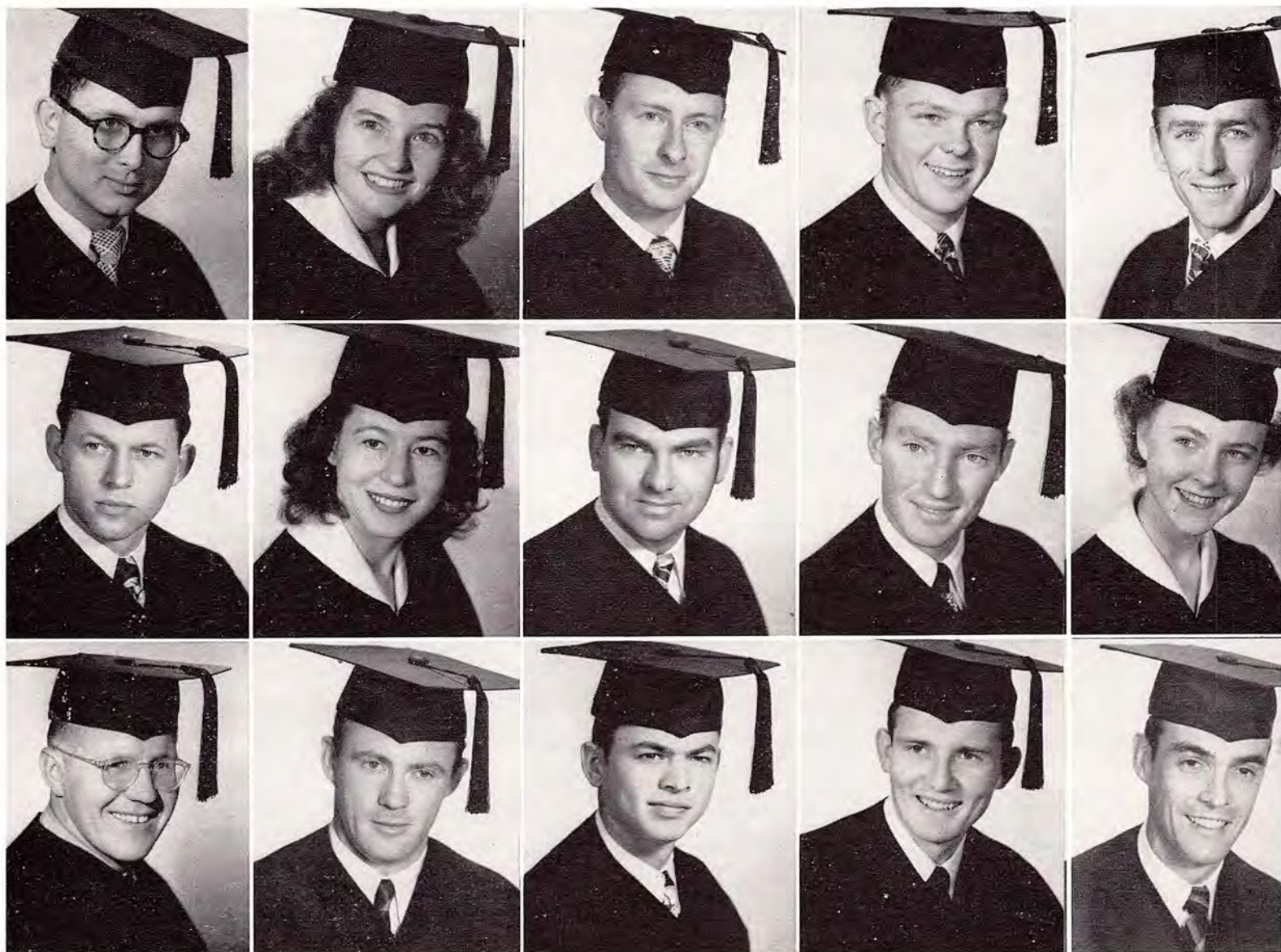
W. MORRIS
W. MUNDT



W. MOORE
R. MYERS
M. OLSEN
R. OLSEN

S. MOLNAR
R. NAKAMURA
E. ODY
J. OSTREM

R. MITCHELL
H. NUFFER
J. ODELL
L. PARKER



T. PARKER
J. POWERS
G. PRINCE

C. PATTEN
F. POWERS
K. RAWLINSON

J. PATTEN
C. PIPER
E. RAULSTON

H. PEDERSON
G. PIKE
R. REESE

W. PELTON
C. PETERSON
D. REINEMAN

BOBBIE HAGLER — A.W.S. President . . . Treasurer Freshman Class . . . Cap and Gown . . . Sponsor . . . Soseco . . . Athenian Society, Vice President, Social Chairman, Secretary, Treasurer . . . P.E. Club, Vice President, Social Chairman . . . President Green Peppers . . . Who's Who.



D. RUSSELL
E. RYERSON

P. ROREM
J. SCHMIDT

R. ROOF
F. SCHNERINGER

N. ROBINSON
L. SCHWALLEY

H. RENFRO
M. SCHWARTZ





J. SEITZ

J. SESMA

W. SHAFER

JACK PATTEN—A.S.W.C. Vice President . . . Sophomore and Junior Class Representative . . . Lancer perpetual Service Award . . . Sociology Major . . . Pep Band, College Community Orchestra . . . Treasurer Lancer Society . . . S.C.A. President . . . College Representative on the Peace Plane Delegation to Washington . . . Who's Who.



D. SHEARER
H. SIMONS
B. SNIVELY
E. SPEAR

T. SIMON
J. SMITH
S. SMITH
W. SPENCER

H. STANFIELD
W. STANLEY
L. STIMPSON
F. SWAN

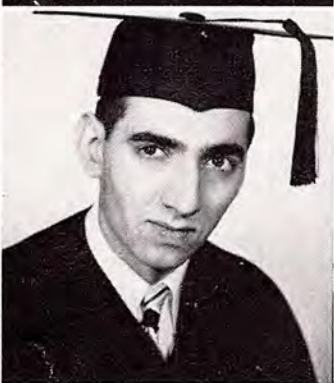
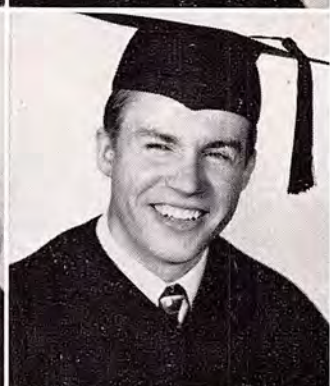
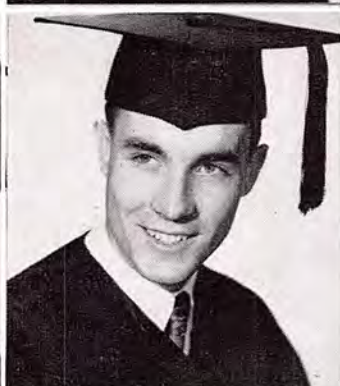
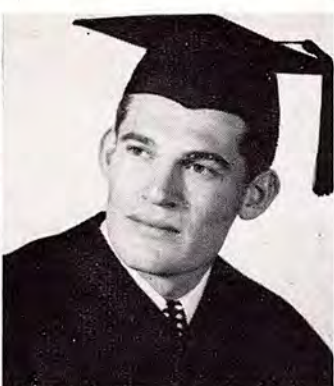
J. SPRECHER
M. STEELE
H. STICKNEY
C. SZALKOWSKI

D. SPOON
R. STEINER
W. STEVENSON
W. TALBOT



B. STREEPER
STRENGBERG

A. STOLL
D. SUTTON





A. TASHMA



P. THOMAS



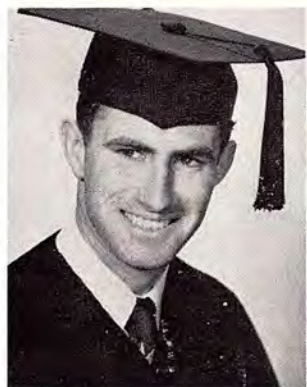
G. THOMPSON



J. THOMPSON



J. THOMPSON



J. TRAUX
C. TURNER



E. TORKELSON
D. ULERY



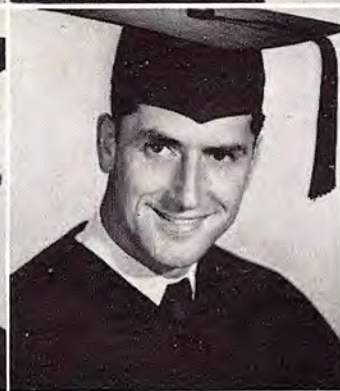
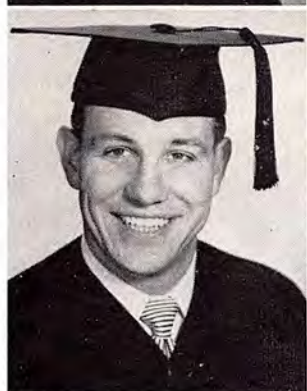
H. TIPTON
E. VESELY



L. TILTON
A. WAER



J. THOMPSON
E. WAGNER



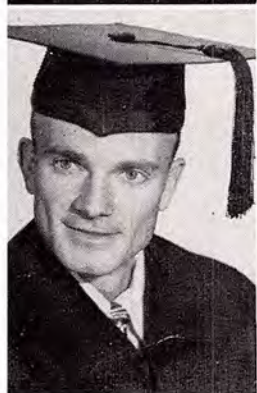
E. WALLACE
A. WONG
L. WOODLAND

D. WARDMAN
R. WILLIAMS
V. WOODWARD

B. WARE
O. WILKES
H. YATES

C. WARREN
J. WHITTAKER
A. ZAEKE

W. WEIR
M. WHITE
R. ZUFALL





LEONARD CROFOOT

A capable, practical, energetic student leader throughout his entire college career, Leonard Crofoot, president of the Associated Students, earned the respect and wholehearted cooperation of everyone with whom he worked. One of the friendliest men on campus, Len is always ready with a genial smile and a cheerful hello; while in the conference room he tempers his good humor with sane judgment and a real concern for the welfare of the student body. In the growing and expanding period in Whittier history he directed an expanding student activity program and growing student spirit and participation in an exceptionally successful school year.

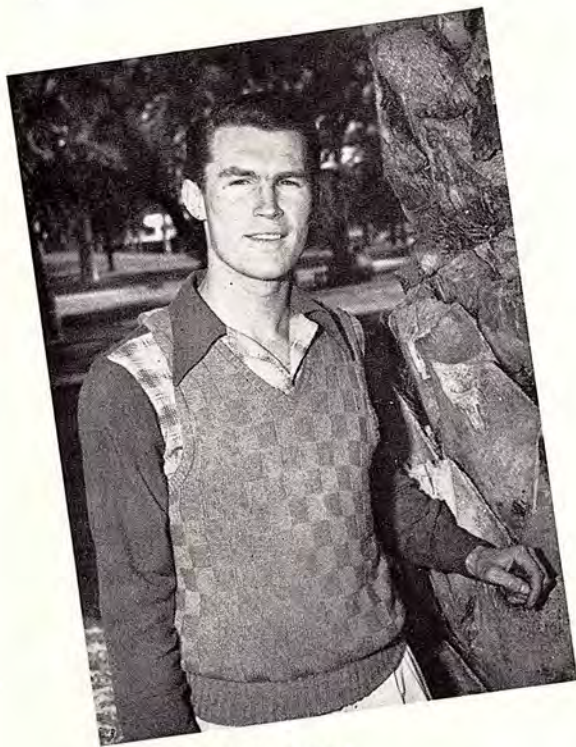
Student Exec

Efficiency and hard work were the keynote in the activities of the Student Executive Committee. Its members, outstanding student leaders who represent various organizations on campus or who fill ASWC offices, worked energetically under the leadership of Len Crofoot and Jack Patten to plan and direct all the various aspects of student body activities on and off campus. Outstanding among the improvements initiated by the exec committee during the year were the Homecoming celebration, reorganization of the Knights, a uniformed, prize-winning Band, formation of The Spot, increased A.M.S. activities, and improved efficiency in student government.

JACK PATTEN
ASWC Vice President



Student Exec—left to right: T. Parker, H. Stickney, L. Kulzer, J. Price, B. Hagler, L. Snyder, B. Tregoe, P. Lindell, C. Depue, L. Crofoot, B. Keim, M. Kimber, J. Patten.



SID SHUTT
Knight President

The Knights



Knights—Row one, left to right: F. Grundeman, G. Ikeda, R. Ponce, J. Robins, T. DeHart, H. Clay. Row two: R. Phelps, S. Shutt, W. Norling, R. Mills, J. Stang. Row three: B. Bartleson, E. Ewy, C. Cochran, C. Burnette, L. Armstrong, Mr. Richardson.

The Spot

Of the many changes around campus one of the most welcome was the construction of the student lounge and fountain, The Spot. Incorporated with the book store, The Spot was a favorite place for get-togethers over coffee and donuts and for whiling away free time between classes. We all hope this is one "spot" that won't be removed!



Spot Employees—M. Schwartz, Mrs. Kimmel, M. Kimber.

Student Councils

The Board of Publications this year set up a Publications Fund to improve the Q.C. and Acropolis and expedite their operation. Left to right: Duncan Wimpress, P. Lindell, B. Keim, K. Chambers, Kenny Richardson.



The Chapel Committee arranged the many interesting, inspiring, and meditative chapel programs provided during the year. Left to right: Dr. Connick, H. Stanfield, N. Slater, Dr. Pyle, R. Mitchell, E. Draper.



The Joint Council, one of the strongest links between faculty and students, helps provide that characteristic Whittier feeling of cooperation and mutual interest. Left to right: L. Kulzer, L. Crofoot, H. Stickney, J. Patten, B. Hagler, Dean Richardson, Dean Gregg, Dean Spencer, President Jones.

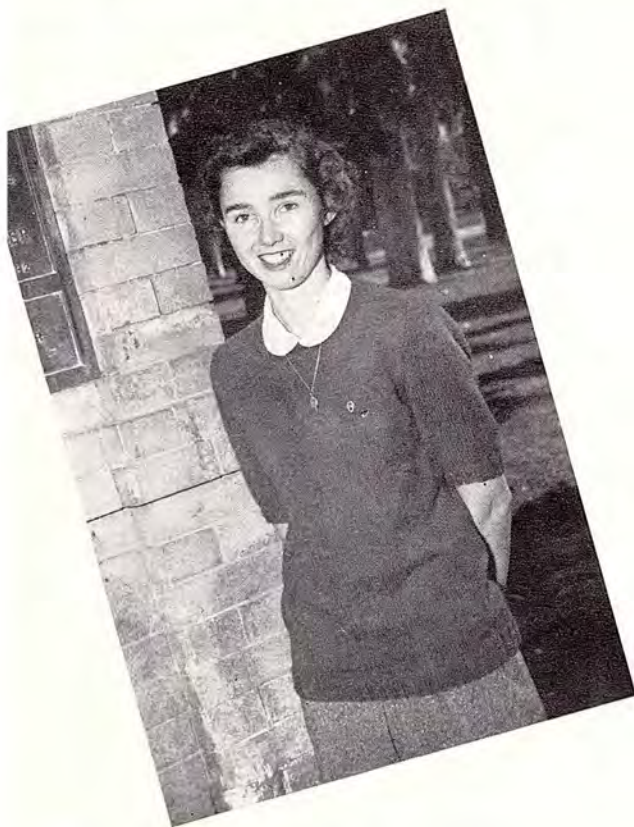


The Interclass Council helps arrange all class activities, providing particular help to the incoming Freshmen. Left to right: R. Marshall, C. Hall, N. Castor, M. Fossum, S. Rad-don, Dean Gregg, Dean Richardson, D. Strandberg, L. Snyder, Dean Spencer, B. Tregoe.



A.W.S.

The Associated Women Students had an active year under the efficient leadership of Barbara Hagler. When Bobbie attended Whittier Union High School she started down the road to leadership by holding the office of Girls' League President. She leaves us this year to become a physical education teacher. Good luck, Bobbie.



BOBBIE HAGLER
President



B. Hale, vice-president; D. Throckmorton, treasurer; J. Dickey, secretary



JOEY SMITH

Chairman of the Sophomore Service Committee, a group operating under the auspices of the A.W.S.

Sosecos



Sosecos smile for Mr. Dill

The Sosecos Coke and Gab at one of their many get togethers.





The A. W. S.

"Does this mean we'll have our pictures in the annual?"

Green peppers is the organization for women freshmen living off-campus. It gives the girls a chance to get together, like the dorm and society groups, to plan picnics and parties.

Green Peppers



NADINE CASTOR
President

nd a hand

Sponsors squire the new girls around campus, introducing and generally making the girls feel at home. But home was never like this!

Sponsors



"Welcome, frosh."—Soseco's greet new girls



Fourteen sponsors pose on Platner lawn; Row 1: H. Tipton, V. Blank, J. Brittain, J. Bell, B. Wood, M. E. Hart, B. Beane; Row 2: Y. Houze, D. Colwell, L. Green, D. Throckmorton, M. Dunman, B. Hale, J. Hanson.

Prom committee

Prom committee plans another affair. Row 1: J. Newman, B. Johnson, N. Hart, J. Batson; Row 2: F. Rogers, G. DeGarmo, M. Steele, P. Rhoads.



Cap and Gown



VIRGINIA BLANK



BOBBIE HAGLER

Cap and Gown members are chosen for their high academic standing, leadership, and outstanding personality traits. It is their handbook which guides freshmen through their introduction to the rules and mores of Whittier College. The tapping ceremony by which they are chosen is a high point at the annual A.W.S. Banquet at the end of the year.



HOPE STICKNEY



MARGARET KIMBER



CARLEY PATTEN



Isn't there any more ice cream?"



Every year the A.W.S. holds their barbeque in the Harris Amphitheatre, where new girls and old eat together and get acquainted. Student-planned programs afterward provide the evening's entertainment.





JOHN PRICE
AMS President

AMS

The Associated Men Students experienced an upsurge of activity under the energetic leadership of president John Price and his exec committee. An innovation at Whittier was the all-school picture sponsored this year by the AMS, while the older Student Loan Fund was put back into operation as well by this group. The annual AMS-AWS Dads' Day was a triumph of paternal devotion as hundreds of students and their fathers flocked to the campus for the celebration. Men's Week activities featured two snappy dances, the Shamrock Shamble and the Hobo Hobble, a men's smoker in Wardman Gym, and some of the handsomest stubble ever to adorn a masculine chin at Whittier College.

AMS Cabinet—T. Wood, K. Chandler, D. Tucker





om, Jack, and three weeks' growth.



Mona, Joyan, and Bob examine the schcol picture.



Dads' Day dinner at the Campus Inn



BRUCE MITCHELL
Sports Editor



GWEN SCHLANGE
News Editor



DWIGHT BECK
Sports Editor



LARENE OREM
Feature Editor



JIM MITCHELL
Rewrite Editor



BARBARA RANZONA
HELEN WATERS
Circulation Editors

Quaker Campus

The Quaker Campus is the official weekly publication on the campus. Under the editorship of Phyllis Lindell this year, the Q.C. gave us complete coverage of college news, sports, public opinion polls, societies, fashions, and a page of features. Bruce Mitchell and Dwight Beck were active as Sports Editor, and Gwen Schlange handled a difficult job as editor of Page I.



PHYLLIS LINDELL
Editor



FRANK QUINONEZ
Business Manager



BETTY OSBORNE, DOLORES NAGGAS
Society Editors

Acropolis

PHILLIPPA WEICKERT
Publicity Manager



GLORIA PLATENBERG
Women's Sports



DICK DEIHL, Business Manager
TOM HOBBS, Assistant



JACK CHENNEY
Men's Sports



Left, DONNA UNDERWOOD, DARLEEN COLWELL, PATTIE PAGET

Picture scheduling

Right, BOB CASJENS, STEVE MOLNAR, MARILYN SCHULZ, LORALEE BOONE

Layout



Unlike any other publication the annual represents the varied aspects of school activity for the entire year. It attempts to paint a picture, a pleasant picture we hope, but because of this, the job of putting out the Acropolis becomes a public relations project with every person on Campus. This is no easy task. We have tried to present a valid cross-section of living at Whittier College, and we feel that we have succeeded.



BILL KEIM
Editor and Compromiser

Upper left: DORRIS DANN, Managing Editor
Upper right: JOEY SMITH, Art Editor
Lower: GENE TERRELL and KENTON CHAMBERS
Literary Editors



JOAN SANQUIST and SHIRLEY CARROLL
Picture Scheduling



Who's Who



HOPE STICKNEY



HERB ROESENER

CHARLIE HALL

Eleven outstanding members of the Class of '49 and two graduate students received nation wide recognition this year as they were chosen to represent Whittier College in Who's Who in American Colleges and Universities. These top student leaders, who were chosen on a basis of leadership, cooperation, and willingness to work, have been active in student affairs all through their college careers and have worked long and hard in earning the individual recognition given them in this national publication. An unusual feature was the selection of two married couples for this award, Charlie and Joy Hall, and Jack and Carley Patten.

Who's Who: VIRGINIA BLANK—sponsor chairman . . . Cap and Gown . . . SoSeCo . . . AWS officer . . . Athenian prexy . . . WENDELL BROWN—chairman of WSSF drive . . . active in SCA and Theophilus club . . . track team . . . LEONARD CROFOOT—ASWC president . . . Orthogonian . . . president of his sophomore and junior classes . . . basketball team . . . BARBARA HAGLER—president of AWS . . . Cap and Gown . . . PE club . . . SoSeCo . . . Athenian . . . CHARLES HALL—Senior president . . . former athletic representative . . . Franklin . . . football and baseball letterman . . . JOY HALL—Athenian president . . . former Acropolis editor . . . SoSeCo . . . song leader . . . sponsor . . . MARGARET KIMBER—ASWC social chairman . . . sponsor . . . Cap and Gown . . . SoSeCo . . . Palmer . . .

JOY HALL

LEN CROFOOT

MARGARET KIMBER



JACK PATTEN

CARLEY PATTEN

VIRGINIA BLANK



LELAND KULZER—treasurer of student body . . . captain of football team . . . Orthogonian . . . CARLEY PATTEN—Cap and Town chairman . . . sponsor . . . oSeCo . . . former women's representative to executive committee . . . Palmer . . . JACK PATTEN—ASWC vice president . . . former sophomore and junior representative to exec committee . . . Lancer . . . HERB ROSENER—organizer and former director of college Band . . . graduate student . . . Lancer . . . HOPE TICKNEY—student body secretary . . . sponsor . . . Cap and Town . . . Senior class secretary . . . Athenian . . . GEORGE ENOPIR—former ASWC vice president . . . social science coach . . . graduate . . . top honor student . . . manager of "The Spot".

GEORGE TENOPIR

BARBARA HAGLER



LELAND KULZER

WENDELL BROWN





President William C. Jones

In this year we celebrate the centennial of the Gold Rush. The romantic narrative of those who came to California hoping to find quick wealth in the golden sands and hills and who remained, harvesting over the years more bountiful wealth from the fields and orchards, will always be a thrilling story to all Americans.

Thirty-eight years after the Days of '49, a company of Quakers established the village of Whittier on a barley and wild mustard field on the southwest slope of the Puente Hills. Nine months later, reflecting the concern of Friends for the education of youth, a meeting was called for the establishment of a college. On that evening in February of 1888, brave and grandiose plans were formulated to bring a college quickly into being. Six months later the ambitious project came to naught in the collapse of the fabulous land boom.

Then began the process of building slowly and substantially. Academy succeeded academy until 1891 when the secondary school which became Whittier Col-

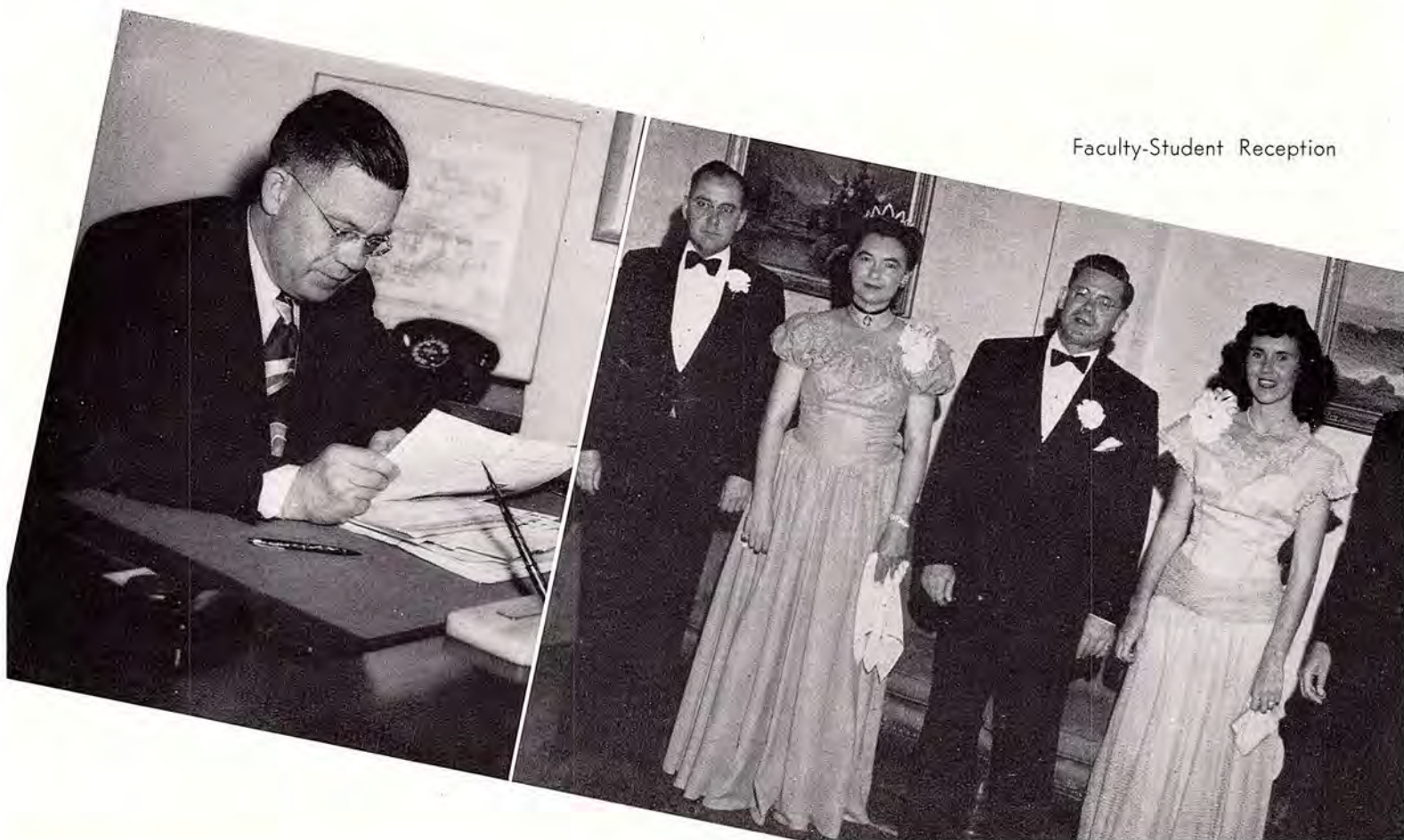
lege was established. Construction of Founders Hall was begun in 1893. In 1901 Whittier College, collegiate institution, came into being—in 1904 the first class, three women and one man, was graduated.

Through the almost half-century since that day, through economic depression and prosperity and crisis of war, Whittier College has grown in material wealth, educational prestige and spiritual stature. In a world which has frequently been one of struggle and cynicism and opportunism, the "College on the Hill" has stood as a blessed area of freedom, tolerance, good-will and common sense.

Whittier College is truly a California institution. Founded in an atmosphere of romance and optimism, tempered in days of adversity, matured through the generous devotion of scores of inspiring teachers and wise benefactors, Whittier College comes to the Centennial Year with gratitude for its glorious past, strength for its useful present, and confidence in its greater future.

WILLIAM C. JONES '26
President

Faculty-Student Reception





WALDENA BALDWIN
Assistant Registrar



WILLIAM FERGUSON
Auditor



ROBERT ASHBROOK
Business Manager

KENNETH BEYER
Graduate Manager and Alumni Secretary



G. DUNCAN WIMPRESS
Director of Public Relations

Administration

Among the most complex problems of a college are those of its inner workings, the machinery of its operation. Finances, endowments, supplies, maintenance, registration, alumni and public relations all require skillful management. At Whittier we are justly proud of our administrators and of the excellent facilities and organization of the school plant.

The Deans of a school have always been the normal connecting link between the administration and the students. Whittier College is fortunate in having Deans who stress guidance and friendly assistance over formality, maintaining a close feeling of cooperation between students and faculty.



KENNETH RICHARDSON
Dean of Students

HAROLD F. SPENCER
Dean of the College



MARJORIE GREGG
Acting Dean of Women



BEN WHITTEN
Librarian



HILDA PLYLER and
ELLANORA KRAMER
Assistant Librarians



Medical Staff—DR. WILLARD SMITH,
FRANCIS KULZER, LEILA FINCK

General Office—CLARA DALLAS,
LILIAN LAIRD, STELLA PIERCE



Registrar's Office—BEVERLY NICHOLS,
VETA DENTON, ROSELLA SZALKOWSKI



Staff

ALICE ROOP
President's Secretary



To maintain an efficiently run institution requires the work of a large number of people. Our thanks go out to the many members of the college staff, without whose help Whittier would not be the fine college it is. To the librarians and their assistants belongs the credit for our fine library facilities. The General Office staff, the registrars, and the administrative and office secretaries solve the many problems of record files, correspondence, bulletins, and paper work necessary in a large institution. We entrust our health to the school Medical Staff, who cure our ills and arrange as well for such precautionary services as the chest X-ray and cold shots.

Deans' Secretaries—MARJORIE BROWN,
MERIEL BAKER, MABEL BUMGARDNER



GRIPP
oller's Office

Administrators' Sec'ys—BEVERLY NUFFER
and JOSEPHINE HAMANN



CAROL COOPER
Public Relations Secretary

Maintenance

Beauticians of the face of Whittier College are Mr. Ramsey and his maintenance crew. The green sweep of lawns, colorful borders of flowers, and carefully manicured hedges are the products of the gardeners' art; while the building supervisors keep offices, class-rooms, and laboratories clean and fresh. We are proud of our campus and building facilities, and we are grateful to the men who keep them in top shape, always providing the college with an attractive appearance to match her fine tradition and reputation.



H. SCOTT RAMSEY
Superintendent



MR. GIST and MR. PARKS
Grounds



MR. HUNDLEY
Janitor



MR. STEELE and MR. KRAUSE
Painters

Feeding the largest group of on-campus students in the school's history was a big job, but it was ably handled by Mr. O'Herron and her staff at the Campus Inn. The management, the waiters and waitresses, the cooks, and the kitchen staff all worked as a co-operative team to keep the Inn running smoothly, providing the excellent food it did throughout the year.



Cooks—Left to right: Mrs. Foley, Mrs. Miller, Mrs. Garver, Mrs. Enlow, Mrs. Nilson, Mrs. Smith, Mrs. DeLics, Mrs. Bischel.

Campus Inn

Now time!

ROSALIE O'HERRON
Home Economics



Departments



ELNORA LAUGHLIN
Art

Art

The Art department, homeless since the old Art building was taken down prior to the construction of Hoover Hall, took up residence this year in bright new rooms in the south wing of Provident. Under the direction of art instructor Elnora Laughlin, the talented artists of the school exercised their special abilities in painting, drawing, sculpturing, and designing. Though not a major department of instruction, the Art department nevertheless plays an invaluable part in school life, expressing itself in the various publications, posters, decoration, theater work, and cultural aspects of the college.

The sculptors' art



Economics and Business Administration



Business Administration and Economics majors last year organized the Diogenian society, aiming to increase the professional and educational opportunities of the members and to give the men in this department a chance to get together and discuss their common interests. Main activities of the club are the semi-monthly dinner meetings, which usually include outstanding lecturers in the fields of professional economics or business administration. Each spring the Diogenians provide to various industries and business houses in the area a brochure of the graduating members and their qualifications for business work. Diogenian prexys were Ed Griffith and Frank Cleland.

PETER PALMER
Economics



Diogenian discussion



HARRY ROGGENBERG
Business Administration



W. E. HEMING
Biology



HAROLD F. SPENCER
Biology



HENRY J. THOMPSON
Biology

Biology

Although there has been no organized Biology Club for several years, the Biology majors find plenty of common interests to bind them into a fairly unified group. There are always several departmental field trips every year to various parts of California, as well as the annual boat outing to Catalina each Spring and the various class field trips to the beach, desert, and mountains. Plainly enough, all is not formaldehyde and microscopes for this energetic bunch.



Biology Majors—Front row, left to right: D. P. Rorem, H. Schmuck, E. Thompson, J. Th K. Chambers. Second row: K. Lawson, B. Duff, D. S. Parsons, R. Mills, M. Hartman, H. Guenthr Thompson, D. Reineman, W. Knox. Back row: Dr. G. Cory, G. Wyne, A. Tashma, R. Nakamura, W. P. DeVries, Mr. Lance, F. Grundeman, D. Kyhos.



Stack back men!



Familiar scene in Naylor

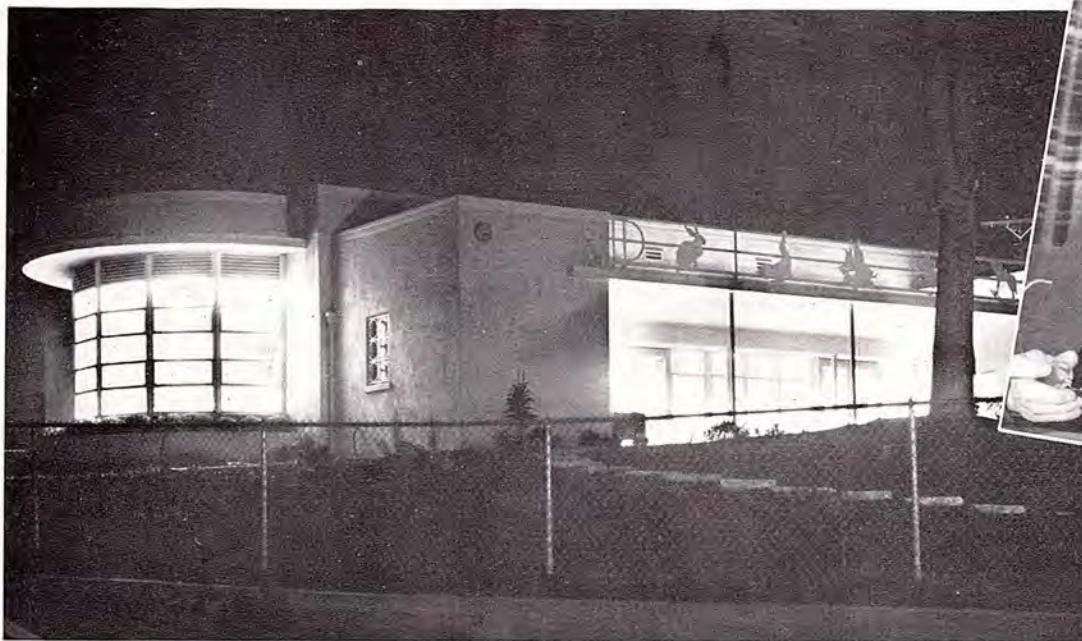
Firmly ensconced in Naylor Hall and surrounded by test tubes, beakers, and bunsen burners, the Chemistry majors lead a fairly secluded life, although we are often reminded of their presence by a scent of hydrogen sulfide in the air. Notoriously hard working, they are nevertheless a cheerful, spirited group, always ready for fun and always mindful of a good-natured rivalry with their fellow scientists in Provident Hall and Founder's basement.

JOHN HAMAKER
Chemistry

Chemistry

ROY NEWSOM
Chemistry





Broadoaks by night



MABEL RICE
Education

Education

ELSIE GRIME
Education



Delta Phi Upsilon—Row one, left to right: J. Brittain, M. Steele, R. Hodson. Row two: V. Blank, L. Crow, D. Spoon, V. Woodward, J. Edborg, B. Johnson.

Throughout the years Whittier College has gained a reputation as one of the outstanding teacher-training institutions in California, as hundreds of her graduates have shown their ability in school systems from coast to coast. This is a great credit to our department of Education, which even now is growing and developing to keep pace with the expansion of the college. Excellent new facilities for nursery and kindergarten training are provided at the recently completed Broadoaks building, famous also as an outstanding laboratory for the study of normal child development.

Delta Phi Upsilon, an honorary organization for primary school education and child development majors, was well represented on campus by a large group under the leadership of president Mary Lou Steele.



VIOLA LAURING
Education



EDWARD SPENCER
Education



Broadoaks "students" love story-telling time

PHILIP PERDEW, Education, and Bob Otto examine a film



English

ROBERTA FORSBERG
English



ALBERT UPTON
English



RENA GRANT
English

Basic Communications Coaches—Row one, left to right: J. Beals, I. McCausland, Plank. Row two: R. Anderson, J. Dart, B. Smith, N. Thorbern, B. Tregoe.





Speech clinic in action

Widening the scope of the integrated Freshman English course to cover all phases of communication, written and spoken, the English and Speech departments united forces this year to offer a class in Basic Communications, which absorbs the old Significs course.

Speech and Drama

DUNCAN WIMPRESS
Journalism



HEROLD LILLYWHITE
Speech

ALFRED LARR
Speech

DeLISLE CRAWFORD
Drama





Freshman Social Science Coaches—Row one, left to right: G. Prince, D. Russell, B. Smith, R. Heard, R. Fitzgerald. Row two: A. Stoll, B. Tregoe, F. Glover, W. Weiler, W. Stevenson, H. LaFavre, S. Garro, A. Bates.

Firm in the belief that a well educated man must have a strong foundation in the history of American thought and institutions to meet adequately his future responsibilities in society, the History and Social Science departments offer special courses in the integrated curriculum to every Freshman and Sophomore student at Whitier College. The basic tenets are clear thinking, a broad scope of understanding, and a strong faith in the democratic ideal, aiming always to develop in us the social consciousness and social conscience which are so necessary for the future welfare of America and the world.

History and

ALEXANDER DE CONDE
History



HARRY NERHOOD
History





More Social Science Coaches—Left to right:
 Haffer, L. Burger, B. Logan, C. Casjens, G.
 Sir, W. Keim, W. Stevenson, R. Olsen, G.
 nge, W. Hill.

Social Science

A Whittier tradition—Dr. Smith and Constitution.



PAUL S. SMITH
 History and
 Director of the Summer School



Ann Regar builds a chair

The Home Economics Club, an energetic though small group, actively promotes the cause of good homemaking and provides to Home Ec. majors the opportunity to learn about various vocations and avocations in the homemaker's art. Members had a busy time at various club activities: dinner parties, a hat show, model home demonstration, tricks in cake decoration; and they had many chances to develop and display their culinary skill at their cake and cookie sale and at several school functions during the year. Club presidents were Blossom Snively and Barbara Fessier.

Home Economics



GLADYS STEVENSON
Home Economics

MARJORIE HAWKINS
Home Economics



Home Ec Club—Row one, left to right: Miss kins, B. Snively, J. Singrey, S. Crawford, E. S. Dr. Stevenson. Row two: M. Schwartz, S. Ri- son, P. Smith, J. Walton, B. Morton. Row N. Jensen, P. Morse, O. Elliott, D. Wild, C. I C. Shanahan, B. Thomas.

Foreign language courses at Whittier serve a double purpose, acquainting the student with the basic grammar and vocabulary requirements of the language necessary for a reading and speaking knowledge, and by selected reading in the literature of the various countries giving him a view of the culture, customs, and currents of thought of his neighbors around the world.

Not pictured here is ESTHER C. ANDREWS, Professor of German.



ALMA ANDERSON
Romance Languages



BONNIE HILTON
French

Language

Mathematics and Physics



ELLSWORTH STECKLEIN
Physics and Math



RANDOLPH PYLE
Mathematics

Scientists in the Physics and Math departments probe the mysteries of the universe with telescopes, slide rule, and cathode tube, seeing always to extend the limits of man's understanding. The Foundation Society, composed largely of men from these departments, meets regularly to discuss various aspects of the natural sciences and to plan worthwhile projects in the scientific field. An important event for the group this year was a visit to the newly completed Mount Palomar observatory.



DAVID BENDER
Physics

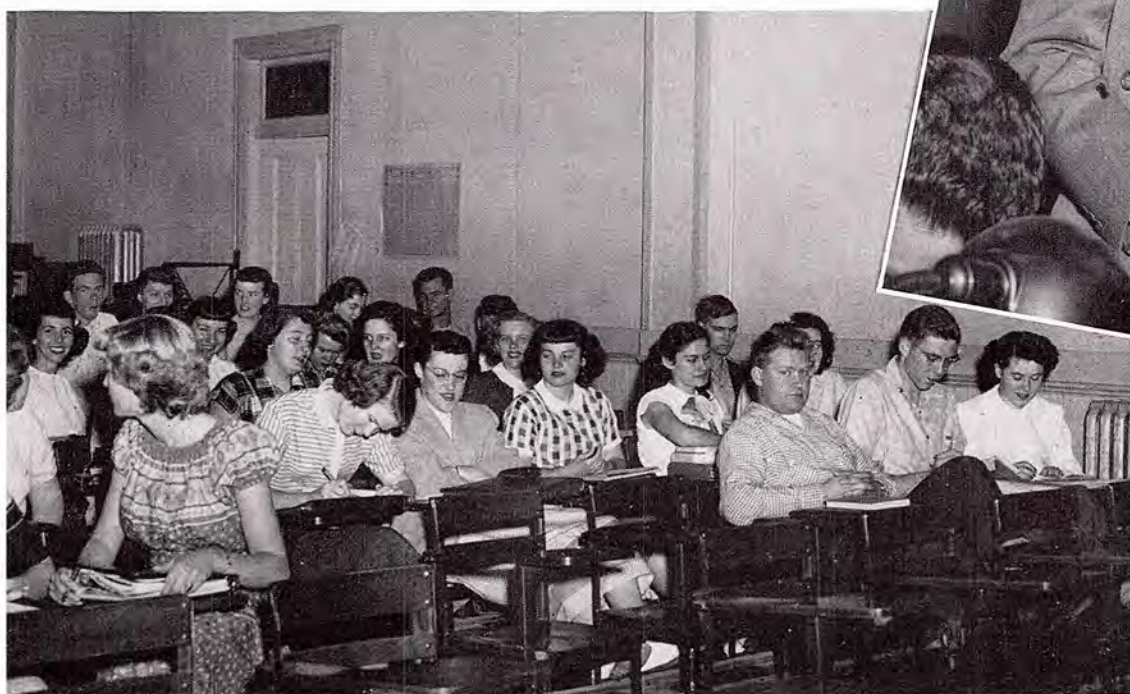
See anything, George?

Physical Science

For many Whittier students the only contact with the department of Natural Science is in the Freshman and Sophomore integrated courses in Physical and Life Science. Here one learns the process of scientific reasoning and becomes acquainted with some of the basic principles of the natural universe and with the forms and processes of living things. These important aspects of a well-rounded education, the observation of our environment and the introspection of the processes of human life here are made an integral part of the Whittier College curriculum.



JOHN LANCE
Geology



Freshman Physical Science
geology class



Sophomores learn the secrets of
Physical Science.



EUGENE RIDDLE
Organ and Voice

Music

Voices raised in happy song are a familiar sound on the Whittier Campus, with the A Cappella Choir, the Women's Glee Club, and the Madrigal Singers all offering an opportunity for vocal expression on the part of talented Poet singers.

A Cappella Choir—Row one, left to right: L. Payne, G. Giddings, P. Anderson, L. Wheeler, P. Milligan, A. Gorman, H. Wittman, F. Burnight, Mr. Riddle. Row two: B. Fauskin, M. Hodson, D. Burnett, C. LaRue, H. Tipton, B. Main, J. Hanson, E. Kendall, J. Hall. Row three: E. Craven, E. Stecklein, P. Bertsch, R. Jeffrey, J. LaRue, E. Curl, M. Hartman, J. Deleissegues. Row four: D. Russell, G. Hasselblad, H. Huppert, BB. Boucher, Ken Mitchell, E. Copper-smith, J. Murdy, L. Burger, W. Turley.



These several vocal groups were active this year in many musical programs at Whittier and throughout Southern California, the A Cappella Choir and the Women's Glee Club giving special concerts in the spring and the Madrigal Singers taking part in numerous student programs and assemblies.



Alma Mater



JAMES McKELVY
Voice



MARYO VAN DEMAN
Music Composition



Women's Glee Club—Row one, left to right: B. Butler, G. Elias, M. Tregenza, J. Kahler, F. Rogers, B. Bolton, Mr. Riddle. Row two: J. Blumen, J. Saito, E. Kendall, J. Lee, D. Burnett, C. Murtland, P. Brown. Row three: M. Stroschein, M. Rayburn, J. Meyer, B. Collins, B. Leach, S. Woolard, J. Deleissegues. Row four: J. Hall, D. Strandberg, B. Main, F. Burnight, B. French, B. Fauskin, M. Hershey.

DARWIN RUSSELL
Organist



MARGARETHA LOHMANN
Piano and Music Theory

The Whittier College Music department has gained a reputation as one of the outstanding among small colleges on the Pacific coast. The department's annual Brahms and Bach festivals are well known throughout the Southwest, while vocal and instrumental groups have represented Whittier with shining success in college competitions for many years.

The Whittier College Community Symphony Orchestra, with members from the college and surrounding communities, represents the feeling of close cooperation between cultural groups in the local area and those of the college. Directed by Miss Ruth Haroldson, the orchestra presents several symphonic concerts each year and offers a chance for students to gain valuable experience in orchestral work.



RUTH HAROLDSON
Violin





Afternoon game at Pomona



"Oh You Basketball!"

Band and song leaders prep for Cal Aggies game



Band Poet

Another important first this year was the addition to the Music department of a thirty piece, uniformed Poet Band. Growing out of the college Pep Band organized two years ago by Herb Roesener, the Band was ably directed by James McKelvy with Tom Simon as Drum Major. Members were outfitted in striking blue and gold uniforms purchased by the student body and administration. School spirit got a big boost too, as the Band performed regularly at football and basketball games, rallies, and parades and won first prize in the college division of the All Western Band Review at Long Beach.



Tom and the Long Beach trophy





J. HERSCHEL COFFIN
Philosophy and Psychology



ONIAS B. BALDWIN
Psychology

Psychology

The Psychology Club, first organized last year for the purpose of bringing the department's majors in contact with people in the various professional fields of psychology Club, first organized last year for the purpose of bringing the department's majors in contact with people in the various professional fields of psychology, this year initiated a series of programs designed to interest a larger group of students. One such event was a lecture and demonstration on hypnosis given by a Whittier grad now in the field of psychiatry, while other programs included speakers from different branches of applied psychology. Bruce Bartleson served as the club's president.



Psych Club—M. Horner, E. Brandt,
B. Bartleson



Sociology and Political Science

Following the Whittier tradition of Christian service and a feeling of social responsibility, great stress is laid on the fields of Sociology and Political Science, making our college almost world famous as a training institution for YMCA and YWCA social workers. Each year Whittier is a center of Y activity, and Whittier students engage in social welfare projects all through the Southland. Famous too is the Whittier Institute of International Relations, held each year on the Poet campus, and noteworthy are the many foreign students enrolled in our Sociology department.



GERALD PATTON
Sociology

CHARLES SPAULDING
Sociology and Economics



J. GUSTAV WHITE
Sociology



J. W. ROBINSON
Political Science

HAROLD ENARSON
Political Science

Women's



Rhythm and expression

P.E. Club presidents—ESTHER HARRIS and JOAN BELL



men's P.E. Club—Row one, left to right: B. Betts, J. Gudgell, L. Tregenza, P. Clark, z, P. Weickert, M. McCall. Row two: B. Bolton, C. Kranz, S. Martin, B. Curtis, gler, C. Henninger, D. Swift, L. Gordon, J. Batson. Row three: N. Fien, Miss aska, J. Newman, F. Gallucci, M. Byrnes, J. Bell, D. Burnett, E. Harris, B. Strang. our: G. Bray, L. Jellison, C. Broady, B. Hooker, F. Swan, J. Ofsthun, N. Hart.



Physical Education

One of the oldest departmental clubs on campus and one of the most active in school affairs is the Women's Physical Education Club. Girls majoring or minoring in P.E. can have a great time in the club's varied program of events, which this year included athletic contests with other schools, as at the Whittier-sponsored Southern California Play Day, parties in the snow and at the beach, programs in folk dancing and modern dance, and a formal banquet. Fun, recreation, and fellowship are the secrets of this group's success.

Women's P.E. Coaches—left to right: C. Broady, G. Bray, M. McCall, J. Bell, F. Swan, B. Hooker, J. Newman, B. Hagler.



LORINE PROCHASKA
Physical Education

LOIS JELLISON
Physical Education



Whittier College, founded by a religious group and endowed with a heritage of Christian service and brotherhood, today stands as an institution with an ideal, rooted in a Christian faith and branching and flowering through all the fields of service to mankind. The department of Religion and the student organizations connected with this department reflect this feeling of devotion and service.

The Student Christian Association, a leader among campus groups, planned this year dozens of educational programs, discussions, work projects, and group fellowships in addition to regular meetings and yearly participation in YMCA and YWCA area and regional conferences.

The Theophilus Association, an organization for students planning full-time Christian service, as part of its many projects set up a service through which members might contact alumni and prominent people in the fields of religious education, social work, and the ministry.

Religion

Student Christian Association



Theophilus Association—Row one, left to right: R. Mitchell, J. Thompson, T. Thompson, M. Marshburn, E. Draper, N. Slater. Row two: L. Parker, C. Storing, M. Waltz, J. Stup, L. Marshburn, R. Case, H. Stan-ley, C. Maloney, Mrs. Connick, Dr. Connick, J. Barron, R. Rayburn.

Men's Physical Education

The Men's Physical Education department has constantly gained new prestige as a training spot for fine coaches as Whittier grads are distinguishing themselves with championship teams all over California. For the athlete the department offers a wide range of sports and games, for the student there are classes in all aspects of physical education. The Men's P.E. Club was active this year, sponsoring a showing of World Olympic films for the whole student body and several programs of direct interest to P.E. majors.

C. MILO CONNICK
Religion



WALLACE NEWMAN
Physical Education

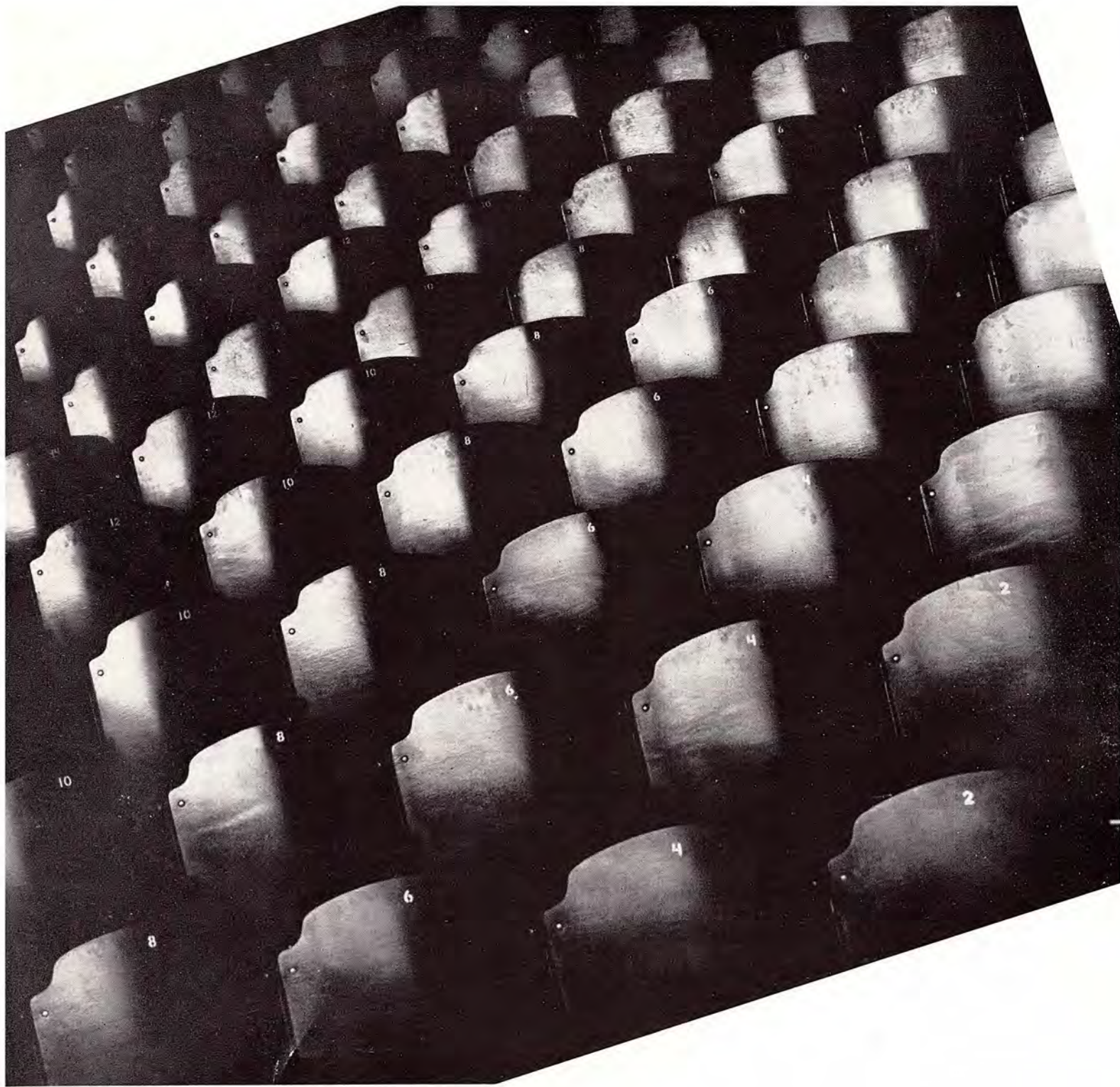


AUBREY BONHAM
Physical Education



ELMER JOHNSON
Physical Education





College Theatre

With two masters shows and two regular productions, the college theatre gave us this year four varied and excellent shows — "The Man Who Married a Dumb Wife," "All My Sons," "Pelleas and Melisande," and "The Sorcerer." DeLisle Crawford carried out his third year as director with the same astuteness and precision which marks our theatre as one of the finest of the small college dramatic groups.



DIRECTOR CRAWFORD



Five minutes before curtain

The House



"The trouble with these wigs
is they won't stay on"



lights dim...



"Why can't you powder your own face?"

Chiaroscuro



"Mirror, mirror, on the wall. . ."



"Away—peasant!"



MARILYN SCHULZ,
Clerk

ROLLIN BUCKMAN,
Technical Director



VIRGINIA DORN,
Directorial Assistant



The college theatre staff members are responsible for supervising and carrying out work in their specialized fields. Working with the director, it is their efforts and continual lackeying that makes the theatre productions possible. Virginia Dorn and Rolin Buckman directed this year their own shows in preparation for their masters degrees. Despite the hard work involved, the staff positions are highly coveted and mean fun as well as work.



GENE TERRELL,
Wardrobe Mistress



DAVID MINTZ,
Technical Assistant

"I'll take
you to San
Francisco. . ."



"The Man Who Married a Dumb Wife"



"Prithee, pretty maiden. . ."



VIRGINIA DORN,
Director

Masters Show

Giles Boiscourtier	- - - -	Carlton Casjens
Alison	- - - - -	Avis Tallon
Master Adam Fumee	- - -	Lewis McClellan
Master Leonard Botal	- - - - -	Bill Turley
Catherine	- - - - -	Dorris Dann
Master Simon Colline	- -	Richard Whitcomb
Master Jean Maugier	- - - - -	Ralph Lee
Doctor's Attendants	- -	Richard Ver Steeg
		Malcolm Wise
Master Serafin Dulaurier	- - -	Donald Lahr
Mademoiselle de la Garandiere	-	Anne King
Passers-by	- -	David Mintz, George Jacobs
		Barbara Smith, William Keim,
		Bob Fitzgerald, Truman Brewster,
		Harriet Curtis, Carol Odell

"Cophosis, pure and simple!"



"Get thee hence!"
 "My dear friend Leonard. . ."





Cast of Characters

Company manager	Jack Thompson
Stage Manager	Ed Reynolds
Prop Man	Don Lahr
Scenery Men	Ralph Lee, George Spelvin, Scott Adams
Joe Keller	Bill Keim
Dr. Jim Bayliss	Richard Ver Steeg
Frank Lubey	Kenneth Pascoe
Sue Bayliss	Barbara Smith
Lydia Lubey	Shirley Jones
Chris Keller	David Mintz
Bert	Arthur Spencer
Kate Keller	Dorris Dann
Ann Deever	Lynn Green
George Deever	Carlton Casjens

"This is when I need your help, Kate."



"Smile again for me."





"First thing you know I'm going to make you a detective, Bert."

"Coming, my little rose."



"I've never been sick a day of my life."

"All My Sons"

Pelleas and



"I am afraid of Arkel"

"They do not close their eyes"



ROLLIN BUCKMAN
Director

Melisande

Cast of Characters

Arkel	Donald Lahr
Genevieve	Marguerite Gilliam
Pelleas	Truman Brewster
Golaud	Carlton Casjens
Melisande	Jacqueline Hartwick
Little Yniold	Howell Thompson
A Physician	Ed Reynolds
The Maidservants	Marylou West, Audrey Jacobs, Dorris Dann, Corinne Pehrson, Evelyn Reed, Martha Reynolds, Doris Throckmorton, Ila Mae Warner, Barbara Streeper, Sue Rogers
The Porter	Ed Reynolds
The Beggars	Jack Thompson, John Wiley, Dave Krueger



"Do you see the gulf, Pelleas, Pelleas . . ."

"It is cold in the room, grandfather"

"We can never find another"



Societies

Palmers parade



Fascinated Franklins
Mets mingle



Meeting in private homes, out of doors, the student lounge, or wherever they could find a place, the societies this year carried on a full round of social activities. Friendship teas and rushes occupied many an afternoon and evening, along with regular meetings, and the traditional seasonal parties. Along in October the women's societies joined in the annual Inter-society Formal, a backwards date affair, where the women were hostess to Whittier men.

Inter-society array



Tacoing A's



"O" Nicholas





"I's right!"

Fledgling Palmers smile



Franklins cut a linoleum rug



Thalian party progresses

Societies are People

Mets and dates



Penn Student directories



I pledges



J. Bell
M. Gartin

J. Brittain
J. Gudgell

C. Broady
B. Hagler

L. Brydon
N. Holmblad

Christmas greetings were extended by the Athenian Society when they sang carols to the men's and other women's societies during the last meeting before vacation. New Years, for every "A," will be associated with pleasant memories of a dinner party and dance. The society finished its academic year with the traditional selling of popcorn balls at the school carnival.



rson
her
e
Call
gomery
rne

J. Batson
G. DeGarmo
C. LaRue
M. McCormick
D. Naggas
G. Platenberg

B. Beane
M. Fossum
P. Lindell
M. Madden
J. Newman
J. Roberts



JOY HALL,
First Semester President



Rogers Stickney	J. Schneringer D. Strandberg	C. Shanahan L. Tregenza	J. Singrey P. Weickert	J. Smith B. Wood	M. Steele V. Woodward
--------------------	---------------------------------	----------------------------	---------------------------	---------------------	--------------------------

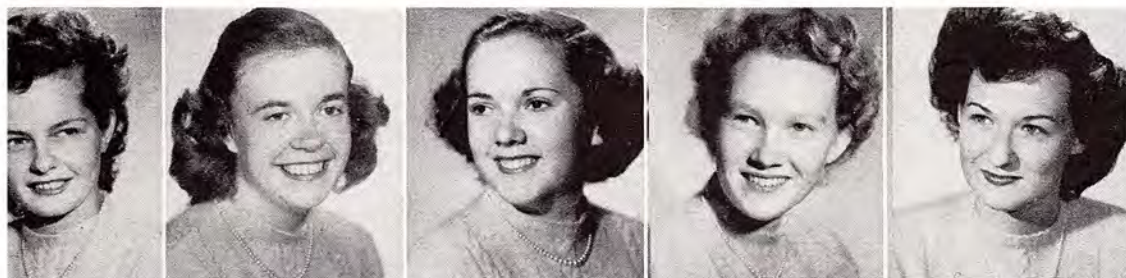


VIRGINIA BLANK,
Second Semester President

Athenians



A's plan



C. Adden
D. Burnett
M. Byrnes
P. Clark
B. Curtis



E. Durston
A. Gorman
L. Green
N. Hart
L. Hawley



I. Helgeson
B. Hooker
J. Martin
R. Miller



F. Moyle
C. Murtland
K. Odle
M. Reynolds



B. Rohland
E. Smith
B. Streeper
F. Swan



B. Thomas
D. Throckmorton
B. Van Daele
P. Van Velzer



JOYCE WYVELL
President Second Semester



JANET LEEVER
President First Semester

A beach party was the first activity of the Ionian Society in the summer where members saw each other again in July. This group followed their fellows in forming a volleyball team for after-school sports with other societies, dorms, and classes. This activity cemented many friendships among the girls. Emerald Bay, Laguna, during Christmas vacation found the members and their dates dancing at the semi-annual informal. Another high-light of the Ionian year was the viewing of "Allegro" at the Biltmore by members and their rushees.



"Ooh, chocolates!"

Ionians



JEAN DICKEY,
Second Semester President



VIRGINIA SPRAGINS,
First Semester President

a
cher
ard

L. Boone
I. Girard
M. McDougal

E. Brandt
P. Hudson
J. Matthews

L. Brandt
B. Hale
P. Paget

C. Cotton
H. Hulst
H. Patterson

J. Craun
B. Johnson
C. Peterson

M. Elliott
M. Klein
B. Prigge



Arizona
Hoads
Richards
Robinson
Smith



D. Underwood
D. Van Ness
P. Wallace
H. Walters
P. Whittaker

Metaphonians

The cold weather found the Metaphonian Society at the snow, from which all the members returned, tired, but positive that they had had a wonderful time. The Met rushees traveled to the date country to spend an exciting day at beautiful Palm Springs. A luncheon at the Racket Club was the sendoff for an afternoon of touring the stores of that city. During election time this group caused much suspense among the other societies. They are the only ones who keep their officers a secret until after a banquet in the winter.

Mets Meet



n
ents
ssegues
rg
on

S. Carroll
D. Colwell
G. Giddings
J. Girton
D. Jones
D. Spoon

M. Christian
J. Corfield
B. Fauskin
E. Harris
E. Kendall
D. Tench



CARLEY PATTEN
Second semester president

B. Betts
M. Kimber
G. Terrell

B. Bolton
C. Kranz
J. Tholl

W. Bowman
T. Markham
M. Thomas



S. Martin
M. Tood





BETTY JO MENKE
First semester president

Palmers



Informal Palmers

A Buttons and Bows barn dance party started the Palmers off to an active year, which ended with the informal and a joint meeting with its alumni. The society gathered clothes to be shipped to China for the needy. Every month it sends gifts to an orphanage for children having birthdays during that period. For the second time the members traveled with their rushees to Welch's in Long Beach for their Spring rush.



E. Reed
H. Rogers



M. Weed
P. Weigel
L. Weingartner
B. Worthen



MARILYN JOHNS,
Second Semester President



MARY LOU DUNMAN,
First Semester President

Bates
Hanson
Schwartz

J. Beals
M. E. Hart
J. Smith

J. Bertram
S. Jones
J. Thompson

H. Curtis
B. Johnson
T. Thompson

E. Draper
G. Kershner
S. Wagoner

G. Elias
F. Kitchen
I. Warner

E. Farr
H. Lilley
D. Welbon



Thalians pose



The Thalian Society deserves a vote of thanks from the entire studentbody for making pom-pons for the cheering section during football season. They made many of the special effects possible. Teen-agers at the County Hospital won't soon forget the Thalians and the kind things that have been done for them since that society started bringing cheer into their lives. The Huntington Hotel and the Pasadena Playhouse made up the rush program for a year climaxed by a very successful informal.

Thalians



M. Fredriksen
B. French
J. Gregory



I. McCausland
M. Moir
M. Olsen



M. White
M. Williams
J. Wise
A. Wong



ates
Cochran
rees
ones
Miller

D. Baudrand
R. Deedon
E. Hadley
J. Konno
B. Mitchell

R. Bushman
G. Crowl
C. Hall
D. Lauderdale
J. Murdy

J. Cheney
W. Dolph
C. Hamilton
K. Lawson
R. Myers

T. Clements
G. Dowell
H. Harrison
R. MacLean
C. Oakes

G. Clifgard
R. Flavin
R. Hoffman
P. Meckna
J. Ostrem

klins will remember this year as a busy one, with a steady round of social get-togethers for members and lges. Highlight of the season was the traditional Franklin Formal, held in April at the Altadena Country s. "The Shoes" award, annual trophy for the Poet-Oxy football victor, was engraved and given, tempor- y, to Oxy by the society.

Franklins



DAVE WICKER
First Semester President



LELAND JONES
Second Semester President

L. Parker
D. Reineman
R. Robbins



H. Simons
P. Smith
J. Smith



J. Streater
W. Talbot
B. Tregoe



T. Tucker
C. Warren
J. Weston
J. Wilcox



R. Williams
M. Wise
L. Woodland
H. Woods
S. Wright





JOHN LA RUE
First Semester President



WARREN KNOX
Second Semester President



on
more
denburg
h
sle
mbers

and
y
v
nningham
l
inger

and
esch
ademan
l
nick

Lancers



H. Laughea
G. McLaren
F. Moore
H. Nuffer
R. Otto
J. Patten

T. Parker
E. Parminte
R. Plank
F. Schnering
J. Stecklein
W. Stimpson

C. Szalkowski
T. Thompson
C. Turner
S. Wiklund
W. Wirt
A. Zaelke

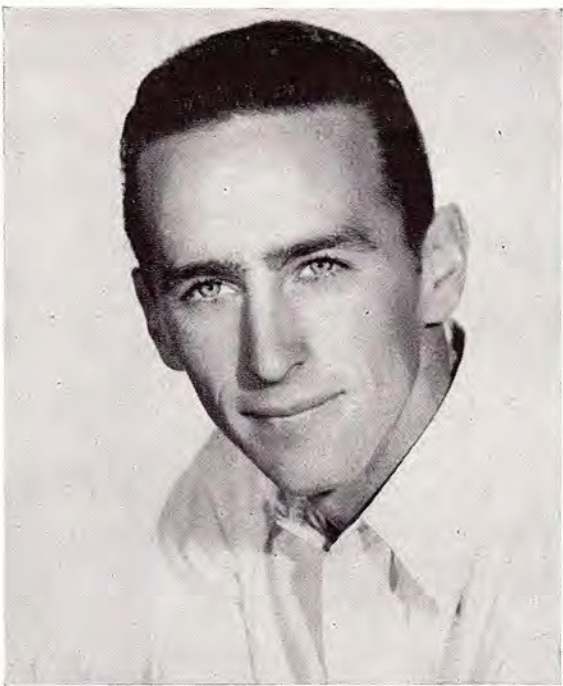
Lancer meeting in Hoover Hall

Foregoing pledging during the first semester the Lancers were able to carry on an active program of social events which included theater and ice skating parties, dances, and picnics. The Lancer Formal was the big event of the second semester, while elaborate plans were also made to present a special program to aid the society's growing Memorial Chapel Fund.

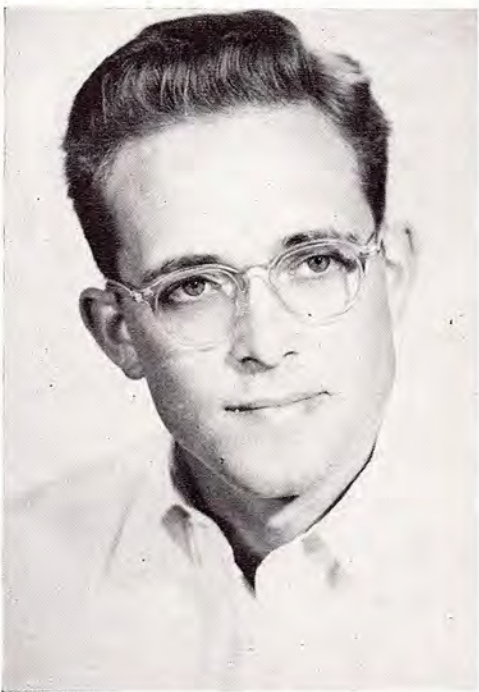


R. Armstrong
 J. Axelson
 G. Bliss
 C. Bloom
 W. Crandall
 R. Galvez

L. Averill
 L. Benedetti
 R. Block
 G. Brandon
 L. Crofoot
 E. Griffith



WAYNE PELTON
 First Semester President



TOM WOOD
 Second Semester President

P. Bryeans
 C. DePue
 J. Haddon

K. Chandler
 W. Dial
 T. Hall

B. Chapman
 J. Dyer
 B. Harris

J. Cheffers
 J. Feary
 T. Hays

C. Cole
 R. Fisher
 R. Headlanc



Orthogonians

J. Hedges
J. Lightner
W. Morris
C. Reed
D. Tucker

B. Heimerdinger
W. McLachlin
R. Nichols
R. Reese
A. Waer

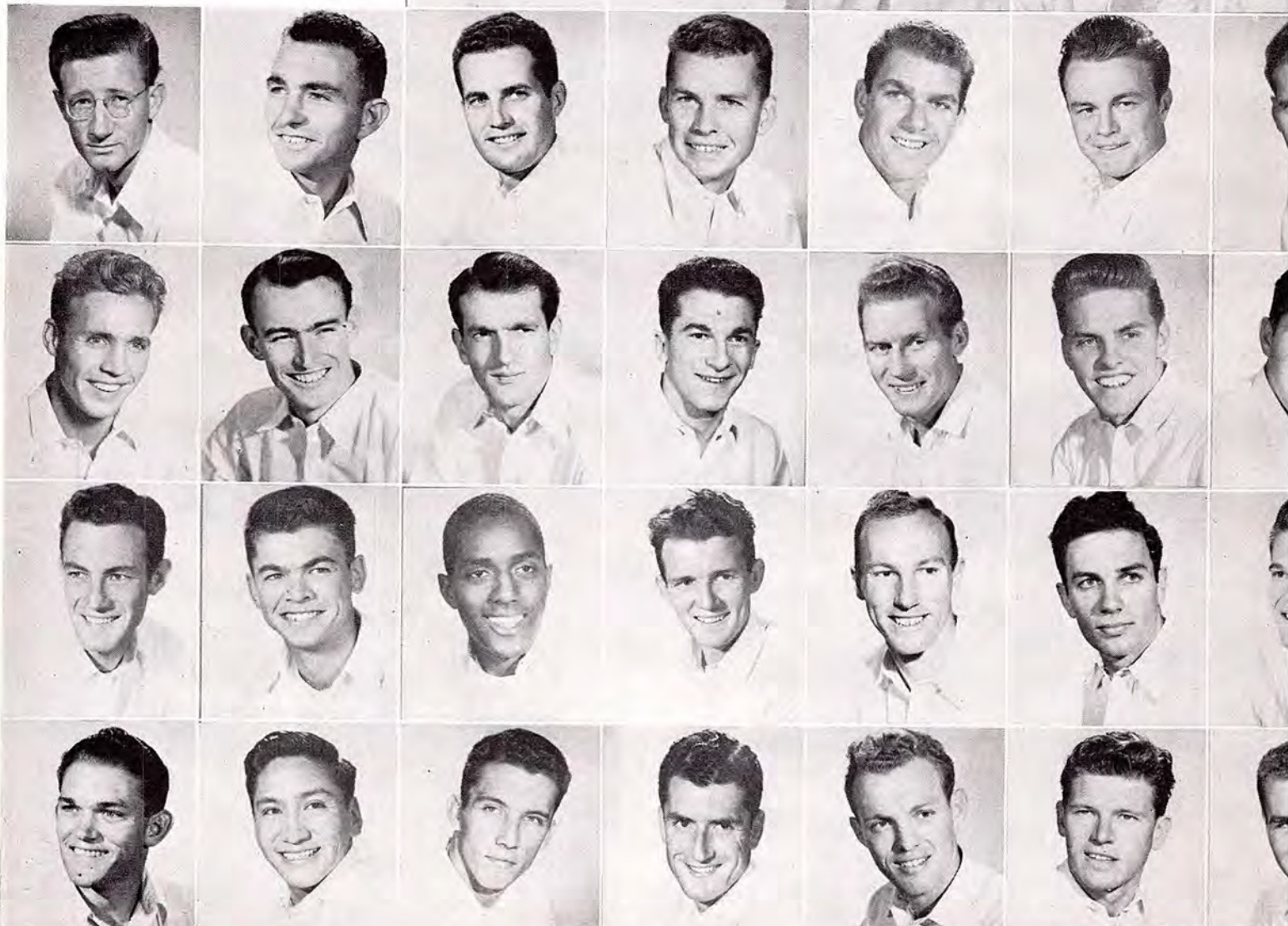
B. Hook
E. Marrs
K. Nowels
E. Simonin
D. Wardman

R. Ives
R. Marvin
B. Patton
L. Snyder
M. Wonacott

W. Kin
J. Mari
W. Pay
A. Sto
A. Wo

C. Krueger
R. Mastain
J. Price
G. Stoll

L. Kulzer
B. Moore
E. Raulston
B. Strong





DON DONATO
First Semester President



HANK CLAY
Second Semester President

Talking things over



Sachsens

With the great increase in college enrollment in the last several years there has been a definite need on campus for a new men's society. To meet this need a small group of men met early in 1948 and with the support of the Dean of Men drafted the constitution of the Sachsen Society, sparking to life an energetic new organization which has matured very rapidly in the past year and taken its place as an integral part of Whittier College tradition. Charter membership in the Sachsens was extended to twelve men: Chuck Burnette, Hank Clay, Charles Demos, Don Donato, James Fries, Bill Harrison, Jim Jones, Jim Kemp, Rupert Ridgeway, John Robbins, Ed Spurr, and Ken Wolfe. Starting with this nucleus of stalwart gentlemen, the society wasted no time in setting up an active program of dances, parties, rushing, and pledging; and they supported school functions with originality and enthusiasm. We look to a great future for the Green and Black crossed swords of the Sachsen Society.

Jim Butler
John Butler



C. Burnette
T. DeHart



A. DeRant
D. Heil



W. Harrison
J. Jones
E. Koenig
H. Lister
N. Odell



R. Ridgeway
J. Robbins
E. Spurr
A. Vautrin
K. Wolfe



William Penns



HARRY HATTEL
First Semester President



LLOYD MAGNUSSON
Second Semester President

J. Aranguren
B. Boucher
L. Brady
W. Branca



R. Brown
J. Groot
R. Heard
C. Heisler



The William Penns, smallest society on campus but always a closely knit organization, performed an important service again this year in publishing and distributing their annual Whittier College Directory. Highlights of the society's activities during the year were the traditional Snow Party for Penns and pledges and the prize-winning float for the Homecoming parade.



Dr. Smith gets a Directory from Penn Chet Heisler



G. Ikeda
T. Marshburn
C. Mulford



W. Norling
L. Petterson
R. Ponce
S. Shutt

Societies satisfy



Inter-society Council—At desk: J. Dickey;
Standing: J. Wyvell, Nellie Hart, M.
Steele, B. Menke; Seated: B. Bolton, B.
Johnson, B. Johnson, Miss Gregg.



Thaliam tete a tete

Lancers feed rushees



Mets accept





O's rehash past games



Palmers and alums reminisce

Brunch

Past and present I's



One literate Franklin



Lancers listen at brunch



Ionian

Thalian

Pledges Pose

Metaphonian



Palmer



Athenian

Social Stuff



Pat's chocolates



Ready?



Out for the afternoon



Dorms

Dorm Life—an integral part of Whittier College. Crowded though they may be, they provide welcome homes for many students. There is something about six girls sharing a room and their experiences that is peculiar to college. Or Newlin—admittedly a madhouse, and not built to be a dorm. Whirling with social activities, all the dorms have parties of one sort or another. Many of these are date affairs, but traditional is the Wardman Whing-Ding.



Dorm Mothers—Row 1: Mrs. Williams, Mrs. Corless, Mrs. Latimer. Row 2: Mrs. Watson, Mrs. Meyers, Mrs. Dilly.

Interdorm Council—Row 1: D. Spoon, S. Parsons, R. Mitchell, J. Leever, G. Kershner, H. Rogers. Row 2: D. Tench, M. K. Smith, M. Johns, P. Whittaker, E. Brandt.



Home Sweet Newlin



YVONNE BAKER
President of Berkeley

Each semester the dorms are scenes of campaigns and voting to select a president. After the election, and each dorm has chosen the person they want to rule their living group, the new president takes over duties. It is through their individual planning, with committees, that the dorms every year have an active year of social affairs; and through them that the daily (and nightly) routine runs smoothly.



GLORIA KERSHNER
President of Way



MARILYN JOHNS
President of Bolte

Dorm Presidents



ESTHER BRANDT
President of Platner



DONNA SPOON
President of Wardman



RUBY MITCHELL
President of Friends



DON DONATO
President of Newlin



M. K. SMITH
President of Painter



BETTY HOOKER
President of Earlham

Dorm



At home for the evening

Earlham entertains



Study talk?

living . . .

Family Portrait



Finals start next week

"Listen to this. . ."



Rally Committee



TOM PARKER

The Rally Committee, under chairman Tom Parker, kept school spirit high with many well-planned rallies, convocations, half-time stunts, and after-game dances. Working along with Tom and the committee were the song and cheer leaders, the Band, and of course Peter Poet, alias Frank Caldwell.



Song Leaders—L. Brydon, P. Montgomery, J. Roberts, G. DeGarmo, D. Strandberg, P. Weickert





The flying young men—C. Burnette, P. Caldwell, W. Stimpson

Noon rally—Poets on the march



Old Pete himself





Picnic snapshots



All School Picnic

We all look forward each year to the annual All-School Picnic, which traditionally has been a chance for students and faculty to escape from the class room and get better acquainted in an invigorating outdoor setting. An assortment of games, good food, and plenty of just plain relaxation were the order of the day at this year's outing in Arcadia Park. A fine time was had by all.

Hot dog!





Homecoming Queen contestants—left to right: Mary Ellen Seaman, Carley Lattin, Pat Read



Poet alumni received a welcome as never before at this year's gala Homecoming Day celebrations. "Mardi Gras" was the theme of the day's festivities which included a spectacular float and band parade led by Queen Carley Lattin and her court, the traditional Alumni Banquet, and an evening game on Hadley Field at which parading bands and floats, half-time stunts, fireworks, and a victorious team greeted the grads.



Upper right: The Orthogonian Cow—1st prize float

Center: Parade view down Philadelphia

Lower right: Prize-winning Athenian float

Mardi Gras ...



Sachsen bottle babies

The Green Peppers were Snow-Bound

Song leaders cheer the team

Flower-decked Met f



Winter



Stimpson, Brown, and Co.—Sculptors

Down the hill from Founders



"Mer-r-y Christmas" with Santa a la Nerhood



set . . .



Mother Nature dug deeply into her bag of tricks this winter and produced an unusual but beautiful surprise — snow on the Whittier College campus. In the early morning hours the lawns were covered with a glistening blanket of white, and familiar pathways took on a strange and novel appearance. Melting snow dripped from the palm trees, and the hill up to Wardman resembled a Swiss ski run. Snow men of various shapes and sizes appeared about the campus. Yes, it will be some time before we forget the winter it snowed in Whittier.

Miss Rice tells a Christmas story



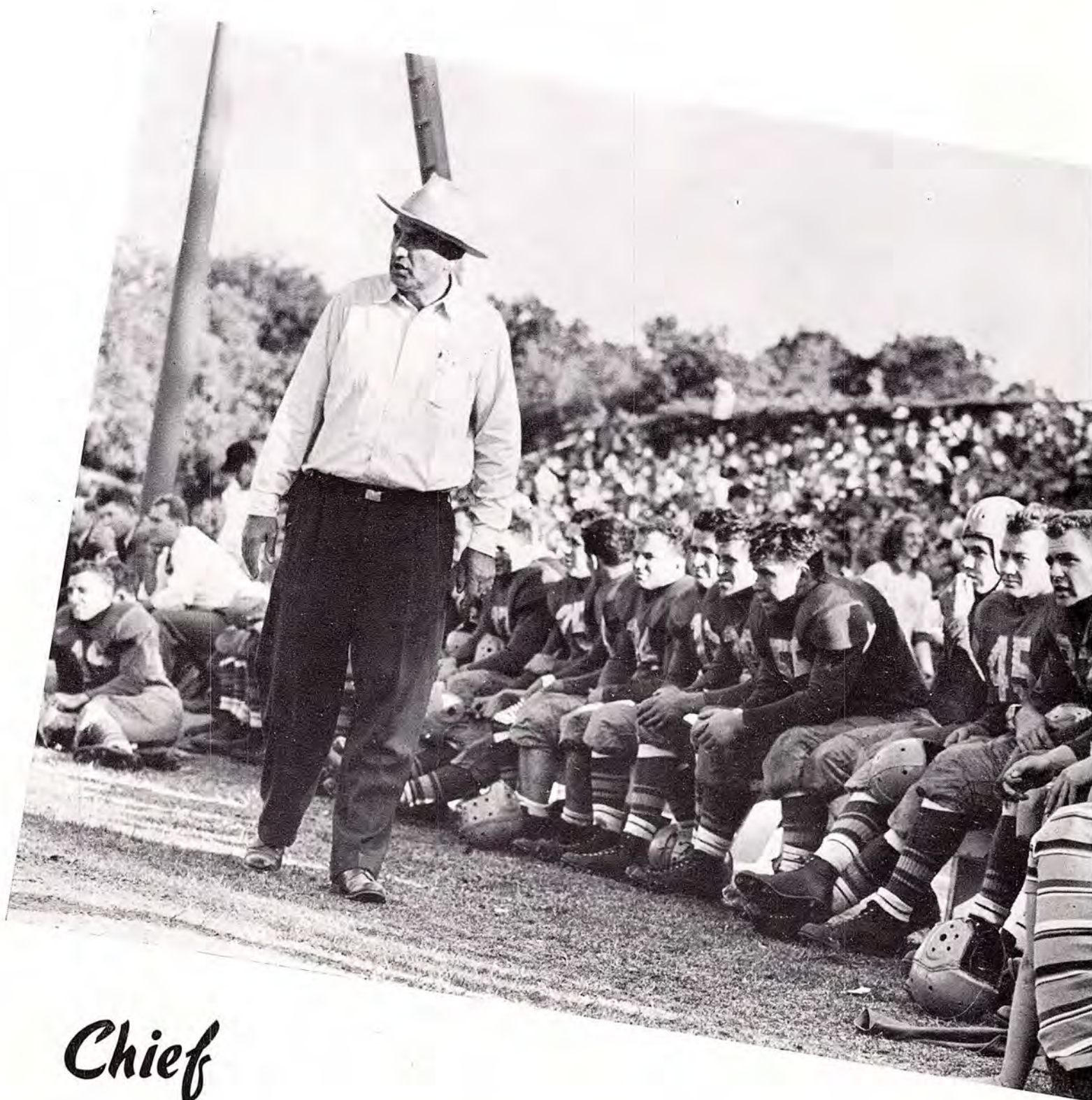
Football

Season Record

Poets 19	Santa Barbara 21	Poets 26	Cal Poly (S. L.) 13
7	San Francisco 18	0	Pomona 14
26	Cal Poly (S. D.) 7	14	Cal Aggies 7
27	Cal Tech 7	22	Redlands 7
6	Oxy 20	27	Arizona State 13

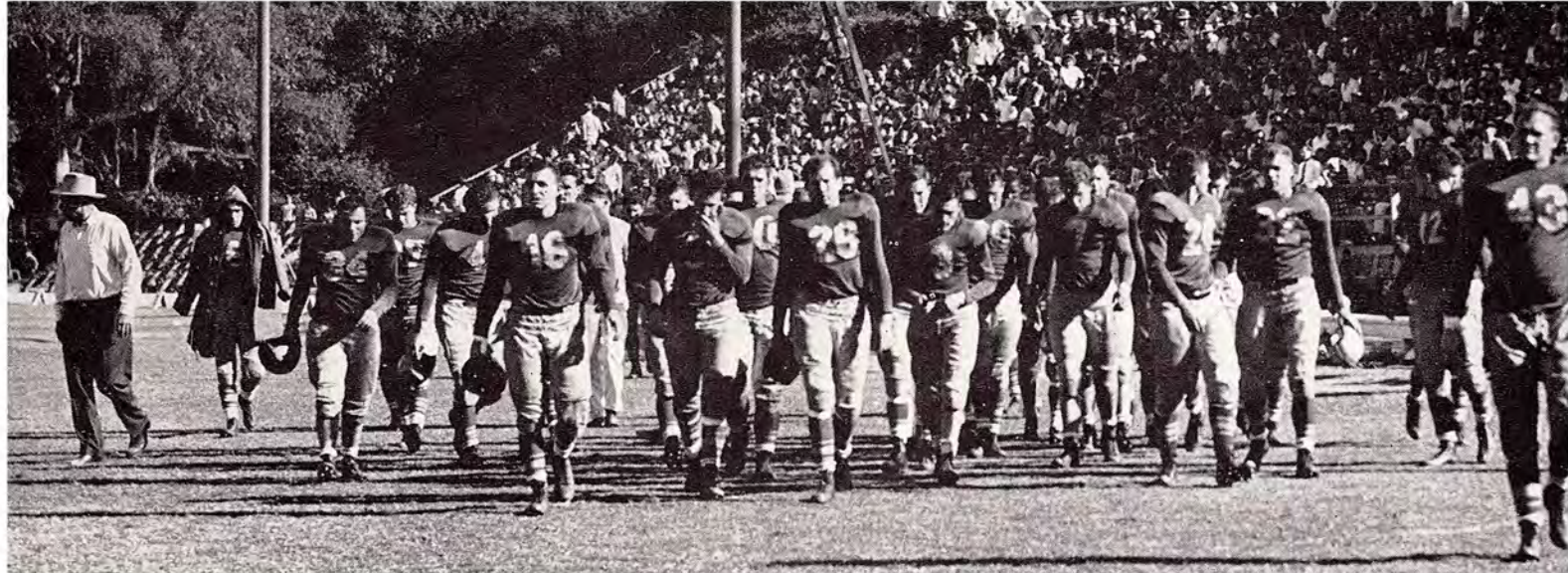
The 1948-49 Poet Football Varsity—Front row, left to right; Trainer G. Solun, Looney, Ameluxen, Paine, Ryerson, Tucker, McKinney, Kulzer, C. Reed, Parry. Second row: Marrs, Cheffers, Strong, Murdy, Block, Brandon, Patton, A. Stoll. Third row: Hook, H. Reed, G. Stoll, Reese, Haddon, Harris, Feary, Headland. Fourth row: Ryan, Marvin, Cleminson, Bomberger, Conde, Axelson, Nichols, Dial, Stecklein. Fifth row: Limbaugh, Hacket, Oakes, Hall, Wood, Beckner, Rodia, Harlow, Coach Newman. Top row: Coach Tebbs, Eropkin, Wheeler, Chandler, Matias, Dilsaver, Siciliano





Chief

Coaching his twentieth year at Whittier College this season, Wallace 'Chief' Newman saw his popularity rise to a great height as he fielded a hard fighting, never say die Poet football team. Winning six and losing four, the 1948 Purple and Gold squad was typical of Newman's coaching, being lauded by many southlanders for its well-drilled fundamentals and great sportsmanship.



Herman Reed polishes off
a Santa Barbara man



Rocky Rodia scores against Cal Poly

Action...

Things don't look too good
at the Pomona half



Joe Feary rockets through the Cal Aggies

They're on the run at Redlands





AL STOLL
Guard



JOHN AMULUXEN
Tackle



CHARLIE HALL
Back

EVAN McKINNEY
Guard



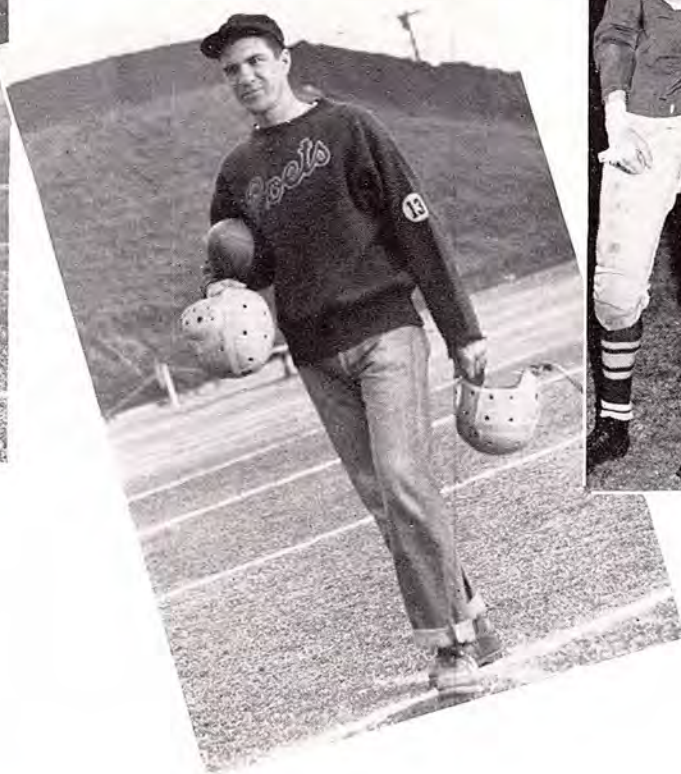
GENE MARRS
Tackle





DON CONDE
Center

JOHN PARRY
Manager



HACKET, CHIEF, TEBBS

Tucker speeds over



Matias plunges over

Siciliano makes a ga

Reed rambles against Pomona



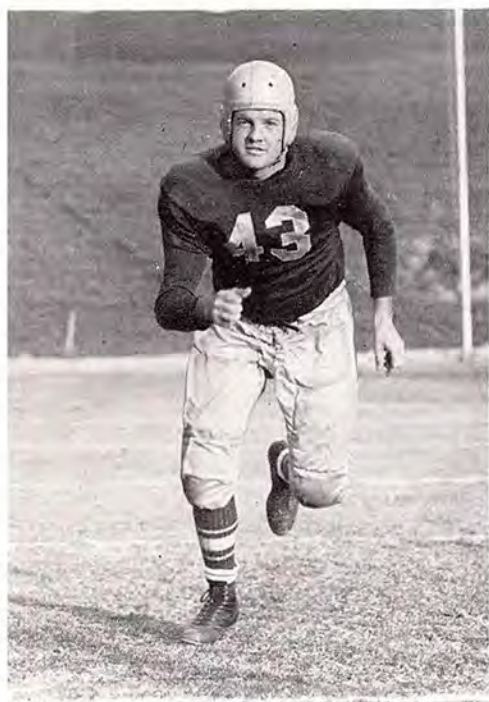
NICK EROPKIN
End



JIM CHEFFERS
Tackle

WALT HACKET
Tackle

TONY SICILIANO
Back





JOE FEARY
Back



ROCKY RODIA
Back



DICK REE
End



Wheeler at Pomona

CLAUDE OAKES
Guard





CHARLIE REED
Back



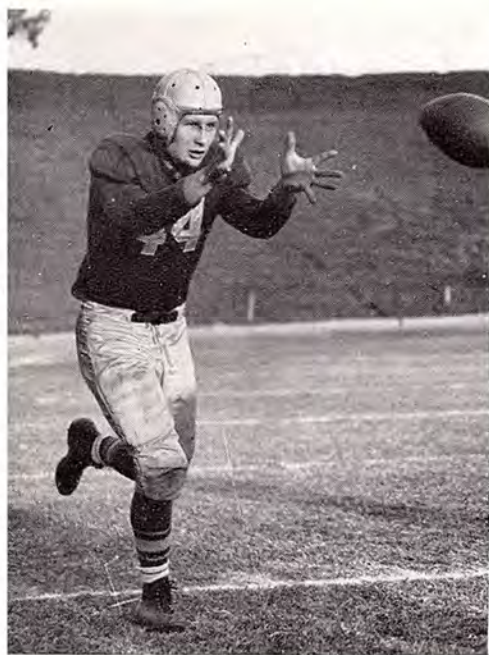
ANDY WOOD
Back



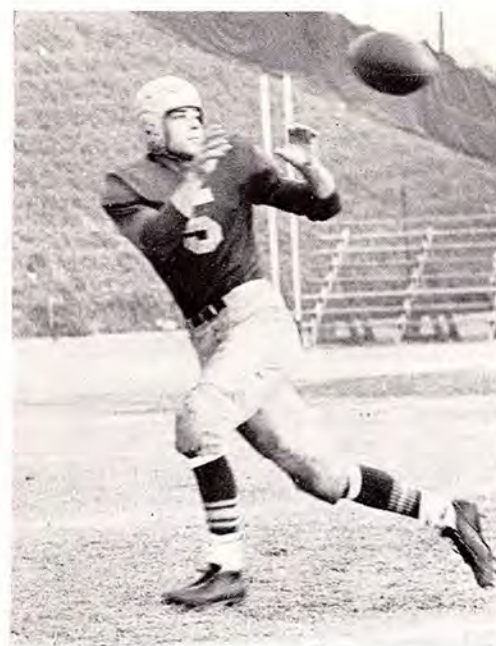
CLAUDE MATIAS
Back

Go Getters...

EARL RYERSON
End



JIM CLEMINSON
Guard



BUCKY HARRIS
Back

BOB BLOCK
End



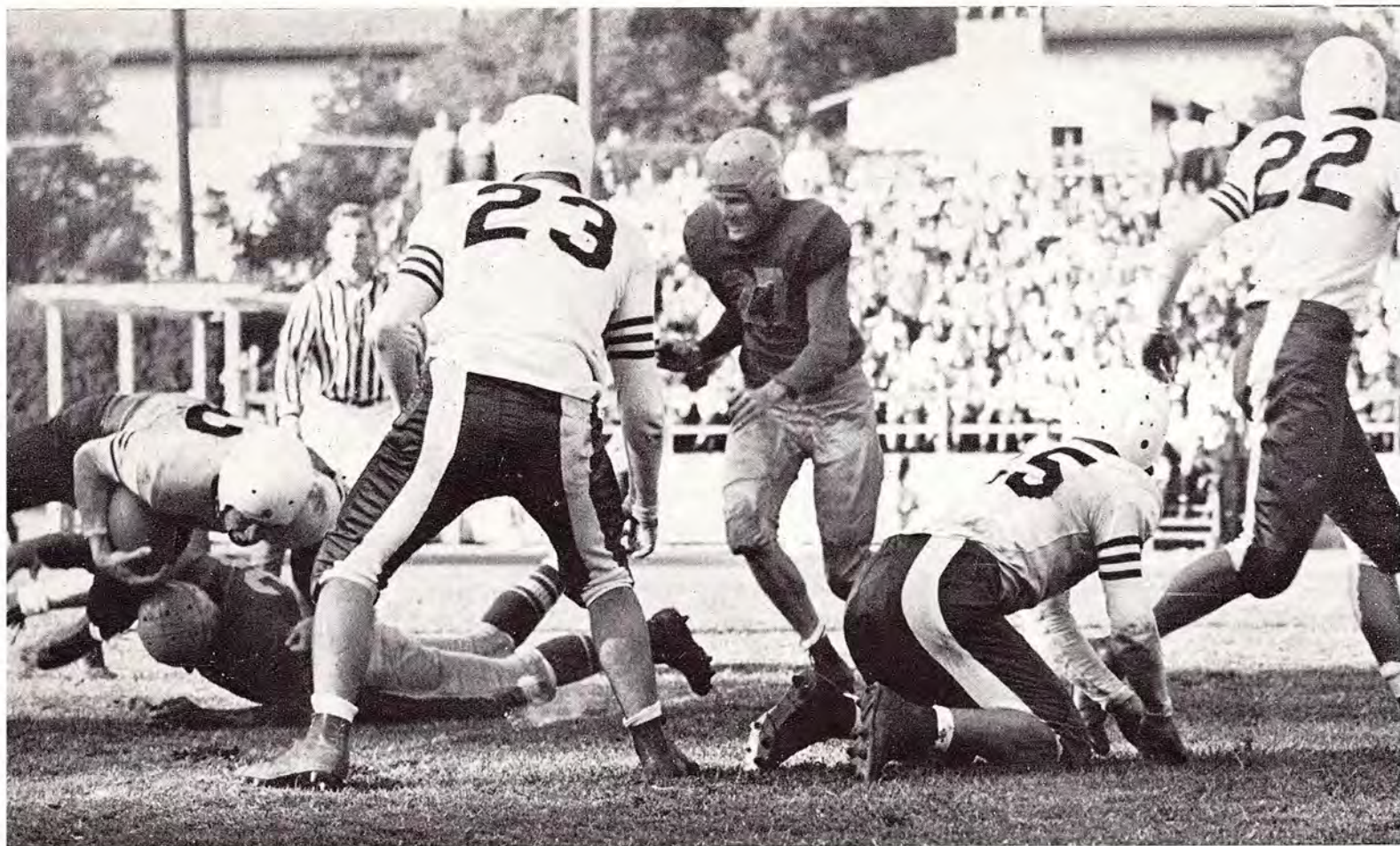
H. L. LOONEY
Back



BOB MARVIN
Guard-Back

Scatback Joe Feary leaves
Cal Tech tacklers for six
points.





Pomona stopped for no gain

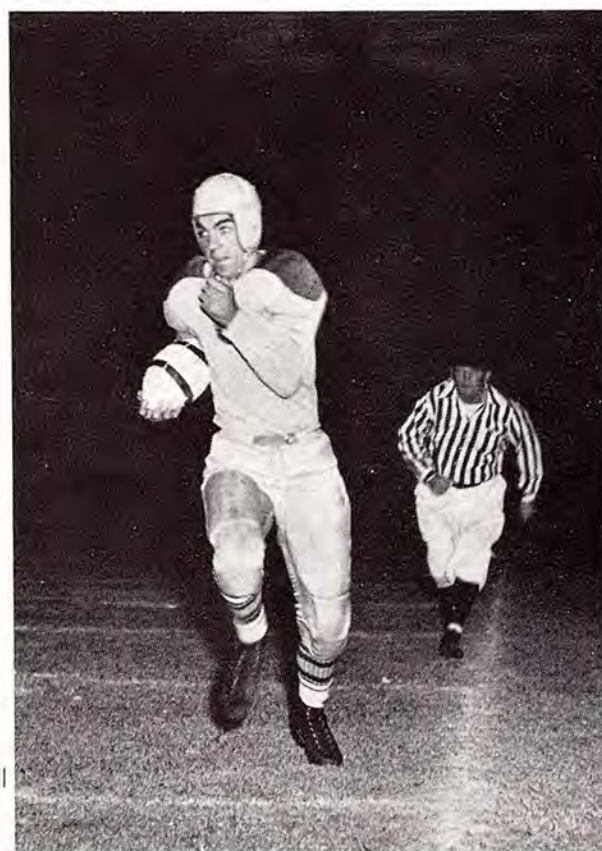
JIM STECKLEIN
Back



JACK MURDY
Tackle



Matias brings a kick-off all
the way back





DON AXELSON
Center

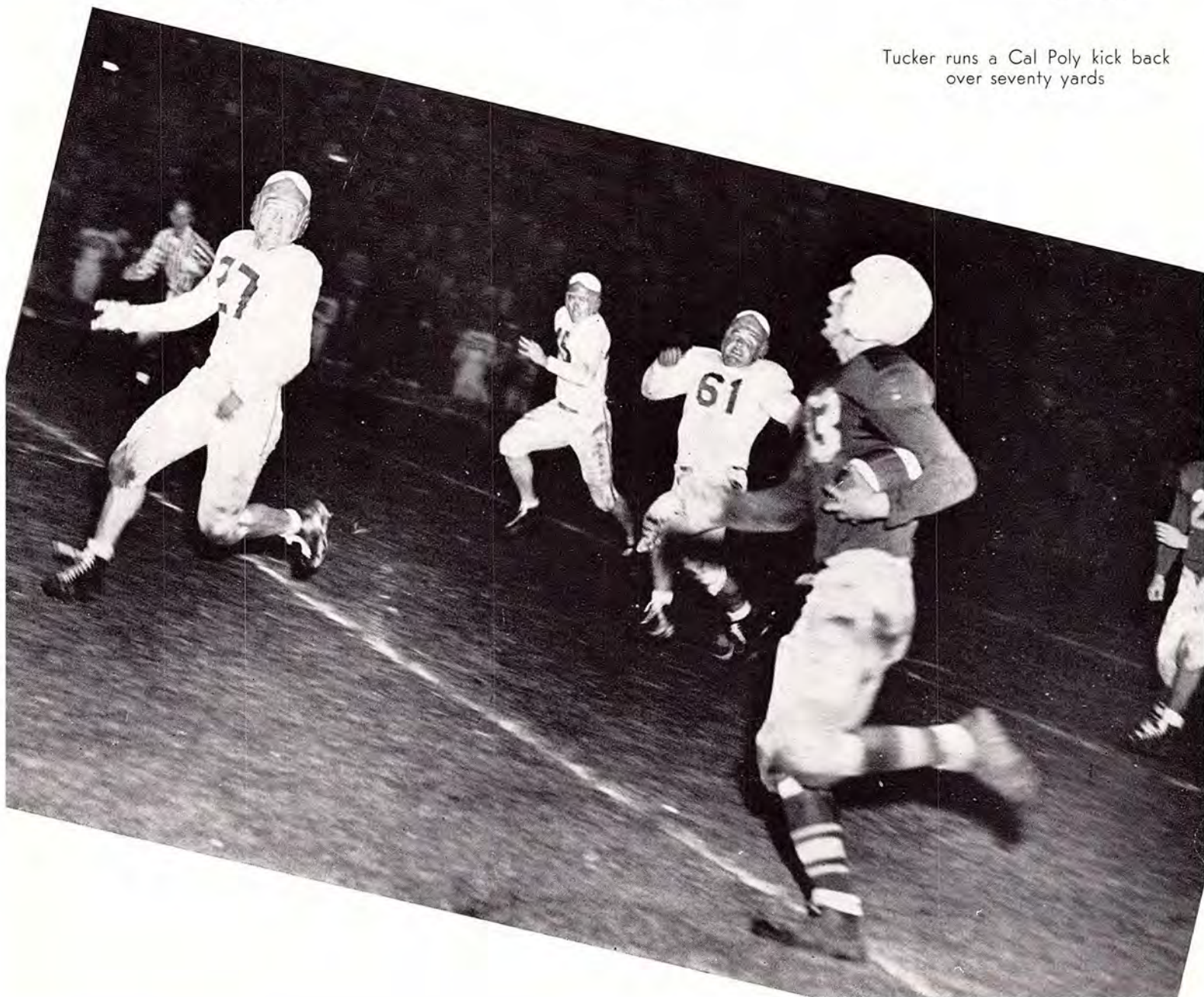


HERMAN REED
Back



BOYD BECKNER
End-Back

Tucker runs a Cal Poly kick back
over seventy yards



Captain

Captain Lee Kulzer played a crushing game at end for the Poets this year. Not known as a great pass receiver, Lee will be remember as a great blocker and a demon on defense.



LELAND KULZER
End



BILL PAINE
Guard

Mr. Five by five, Bill Paine, the hard hitting Poet guard was the only Whittier man to make first string all-conference this year. The jovial 230 pounder was elected captain for the 1949-50 season.



Valuable player

Quarterback Dick Tucker was elected as the most valuable player on this year's squad by his fellow Poets. A hard runner, great blocker and a good passer, Tucker was named on the second all-conference team.

DICK TUCKER
Back



Charge!

Lee Kulzer in action
against Pomona



Basketball Champs Again



Poet varsity; First row left to right, Bud Hill, Dayton Sayer, Jean Martin, Captain Don Wardman, Jack Barton, Wally Kincaid, Dick Kruse. Second row; Coach Aubrey Tonham, Larry Snyder, Ken Knowles, Charlie Reed, Gordon Pederson, Russell Ribb, Bill Moore, Manager Ed Raulston.

RUSSELL RIBB



KEN KNOWLES



FIGHT POETS!



Gordo in action



CAPTAIN DON WARDMAN



SEASON RECORD			
63	Loyola	59	
50	Pomona	42	
52	Arizona	56	
61	Pomona	36	



Coach Aubrey Bonham gives his starting five some early season pointers that led to another Poet championship.



WALLY KINCAID



LARRY SNYDER

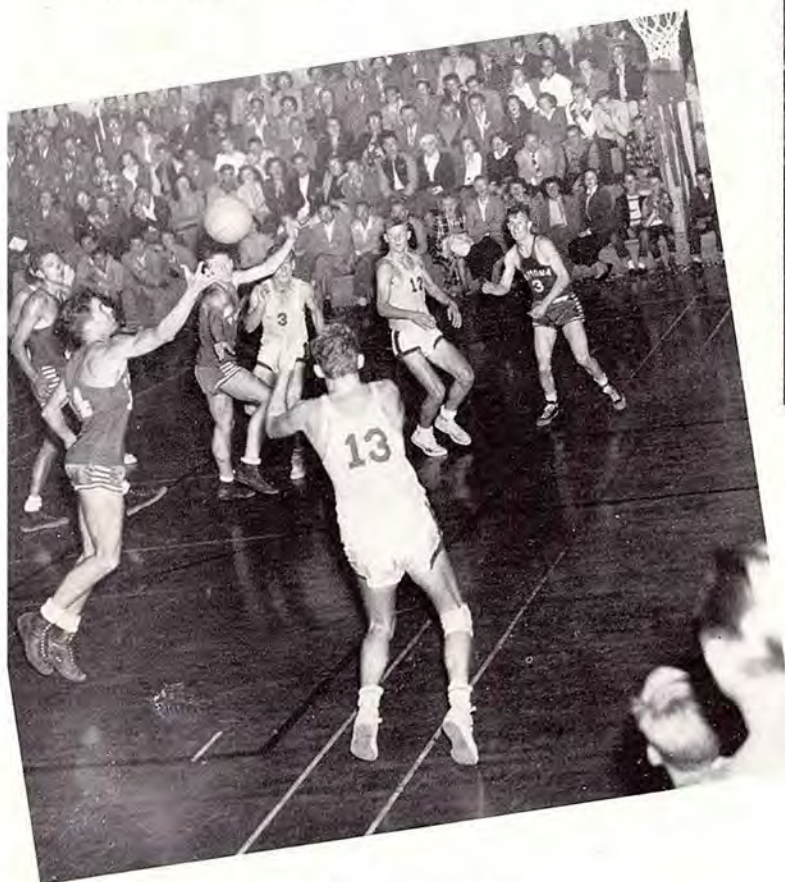


BUD HILL



JACK BARTON

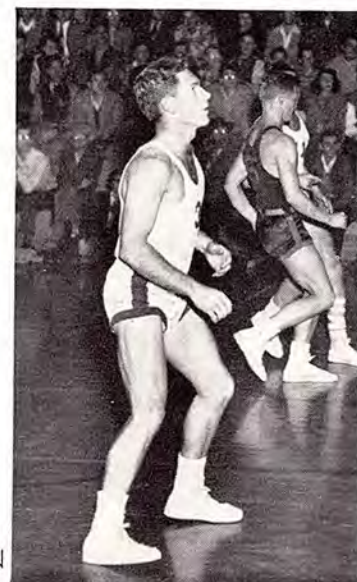
San Diego	35
Oxy	57
Chico	45
La Verne	40
San Pedro	50



Poet-Sagehen clash



Bill Moore, scoring his 1600th point in Poet up-set win over Pepperdine.



JEAN MARTIN

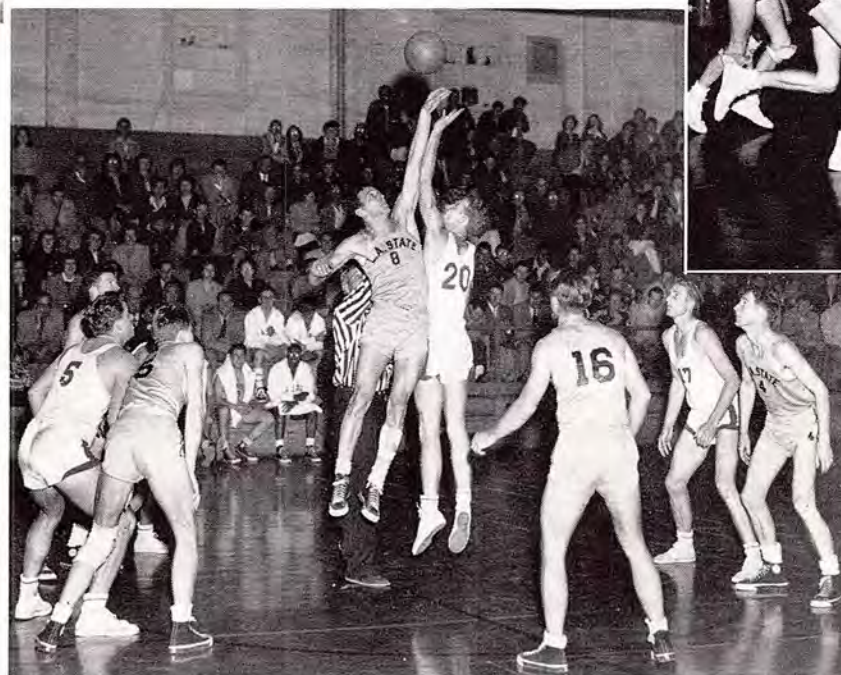


"Mentor of Champions" Bonham collected his seventh conference title in ten years as his prize student, Bill Moore, entered the basketball immortal ranks as the highest all-time Pacific Coast scorer and the tenth highest in the nation with a terrific total of 1625 points.

Ken Knowels tips off



BILL MOORE



46	Loyola
60	Nazarene
58	Cal Tech
39	Loyola
59	Redlands
36	San Diego
50	Chapman
52	Chapman

5	L A Police	50
7	Pepperdine	56
5	L A State	33
8	Redlands	40
1	Proctor's	47
5	Oxy	60
	Chapman	44
5	Nazarene	59
0	San Pedro	58
3	Cal Tech	44
1	Pepperdine	52
2	La Verne	49
0	Pomona	49

DICK KRUSE

GORDON PEDERSON

CHARLIE REED

DAYTON SAYER



Baseball

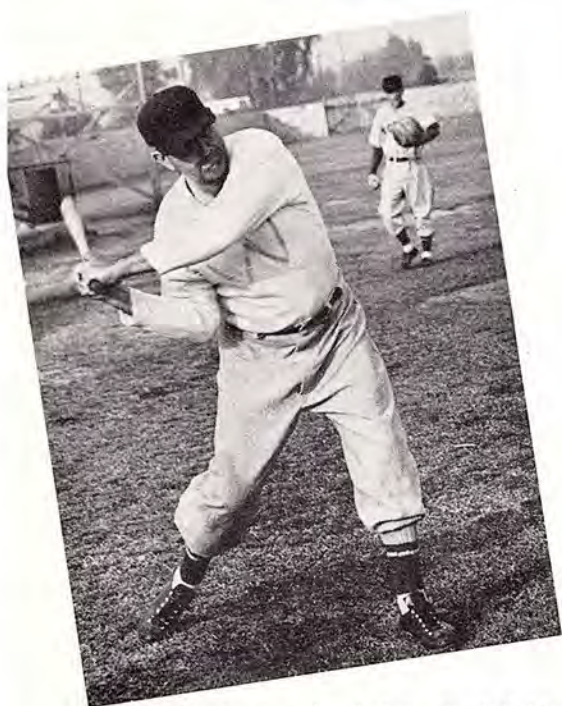
Adding another notch in his long championship belt, Coach Chief Newman saw his Poet baseball club end the season co-title holders with the Redlands Bulldogs.

Winning eighteen and losing eight, this year's horsehiders were a potent outfit. Edged out 5-6 in their first meeting with Redlands, they smashed them 23-6 in the second round.

Poet second baseman Dick Erbe led the conference batters and catcher Paul Bryeans was high on the list. Pitcher Duane Danielson was one of the leading chuckers in the loop while Captain Charlie Hall, surrendering the hot corner to Wally Kincaid, turned in some stellar pitching jobs along with Dick Galvez and Don Wilson.



Another Poet run crosses the plate



Chief puts some hustle into the infield

Floyd Roenicke



Paul Bryeans





Captain Charlie Hall

Johnny Elias



Wally Kincaid



Dick Chavez

C. W. Witthuhn

Don Wilson

Wayne Pelton





Don Wilson



Dick Bushman



Dick Erbe



Jim Stecklein



George Pike



Ken Chandler



Max Cox



Bud Hill

Horsehiders

Track

Coach Aubrey Bonham's Poet Track team ended their season by taking second place in the all-conference meet. This thrill-packed cinder season saw three Whittier College records broken. Captain Tom Tucker led the way, breaking the broad jump record with a leap of 23 feet 6 $\frac{3}{4}$ inches. Little, but mighty Walt Crandall vaulted 13 feet 3 $\frac{1}{4}$ inches for a new pole vault mark and Hal Yates put the shot 48 feet 3 $\frac{1}{2}$ inches for a new record in that event.



Bonnie, Tucker and Tebbs



Alban Reid



Dick Newton gets off in the 440



The camera caught Captain Tom Tucker in his record breaking leap during the Poet-Tiger meet.



Frosh Bob Smith comes in away ahead of the pack in the 440.



Dick Mastain finishes a rough mile run.



Dick Newton nicks Oxy in the mile relay.



Yates, Poet number one
s man, gets away a heave
g the Oxy meet.

Dick Newton gets the stick.



John Price took first place in the
all-conference meet this year.



Record-holder Walt Crandall is up
and over in the pole vault.

Tennis



Coach Elmer Johnson put a hard-smashing team on the courts this year. Hopes were high for a championship but a couple of unexpected setbacks ruined them. First row, left to right, Chuck Phillips, Clarence Ham, Dick Deihl; second row, Jerry Rouzer, Dave Krueger, Tilton, Claire Krueger, Coach Johnson.

Intramural



The "Rockets" ran off with the championship in a good, hard-fought intramural hoop race. The team, first row, Ted Mooschekian, Larry Adler, Bill Witthuhn, Don Wilson; Top row, Herman Reed, Weldon Sperry, Bill Brady, Dick Thompson.



Golf

Led by Captain Chico Thompson, the Poet golfers had a good season, winning the majority of their matches. Bottom row, left to right, Bob Garton, Wally Gresch, Bob Roof, Paul Erickson; top row, Thompson, insert, Ed Reyes, Roy Anderson, Bill McBurney, Dave Rhineman.

Varsity Club



The Poet Varsity Club, made up of varsity letter winners, had its second birthday this year. This club's function were few but important. Their greatest function was the banquets they put on for the in-coming athletes. Those pictured, running left to right from the bottom row up, are Alan McKinney, Dick Galvez, Wally Kincaid, Bill Payne, Gene Marrs, Bill Moore, Buddy Hayes, Jack Murdy, Chuck De Pue, Duane Danialson, Don Beaudrand, Red Marvin, Cliff Cole, Bob Block, Tommy Tucker, Jim Cheffers, Herman Reed, Elmer Koenig, Walt Hackett, Nick Eropkin, Johnny Parry, Dick Tucker, Charlie Reed, Bud Goodell, John Ameluxen, Bucky Harris, H. L. Looney, Dick Reese, Ed Raulston, Bob Fisher.



Dance Instructor Lois Jellison, reports that Modern Dance is coming into its own. This is evidenced by the increasing interest of the many classes this year. One semester of Sophomore physical education is devoted to creative rhythmic activities and many juniors and seniors choose it as an elective.



Smiles of the swimmers at the new Y.M.C.A. pool indicate the popularity of the sport added to women's activity program this year. Limited to beginners for the present program, next year's classes will provide opportunity for intermediate and advanced classes.

Led by manager Cappie Pederson, softball took its place in the intramural sports program near the top of the popularity poll.

Four women physical education majors find a little after-school practice helpful in keeping them on their toes for their practice teaching.

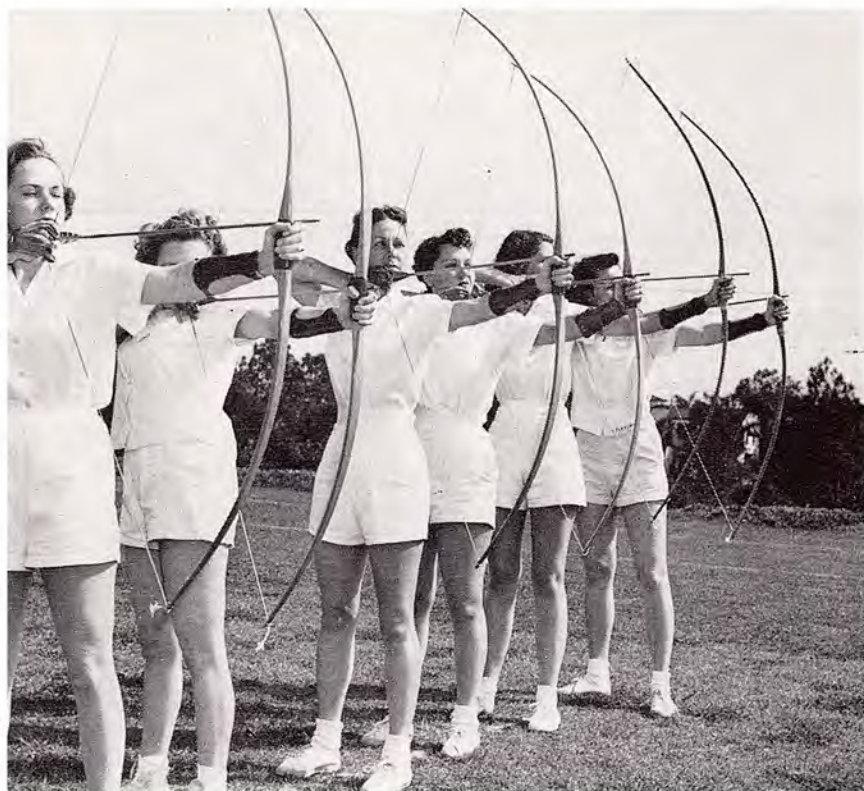


Women's Sports

As the archer seeks her point of aim, so does the department of Physical Education seek to guide its women in aiming their activities at a goal of all-round development.



"Ground—sticks, ground—sticks, ground—sticks." cry starts the game of hockey on the women's playing field above the football stadium.

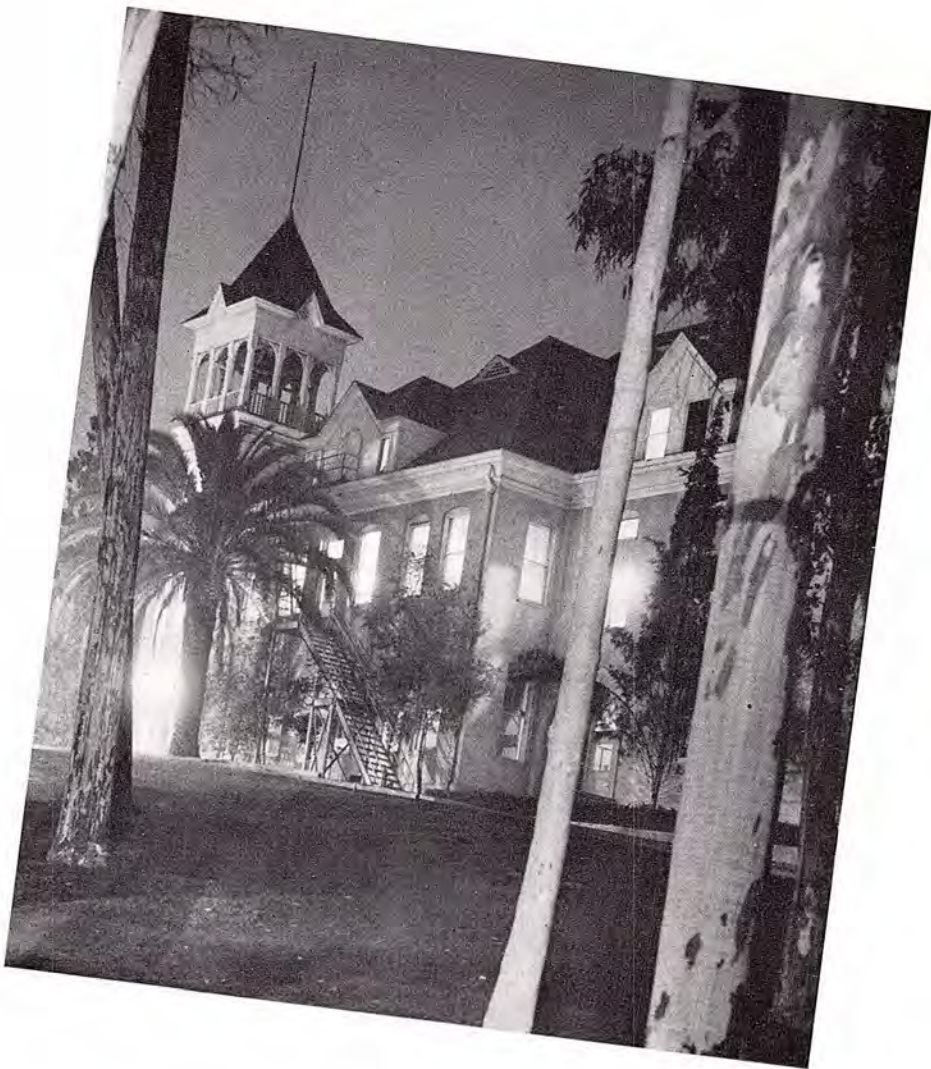


An individual challenge in accuracy and a group challenge in competition stimulates enthusiasm in the archery classes. Whittier was the top scorer in this sport at the college playday.

A sad farewell was bid to riding as the commercial stables were closed down after the first semester.



Basketball is the first of the four team sports offered to Freshman women and is the lead-off game in the intramural program. Highlight of this year's games was the one between the Whittier College women and the women of Chapman College.



Merchants

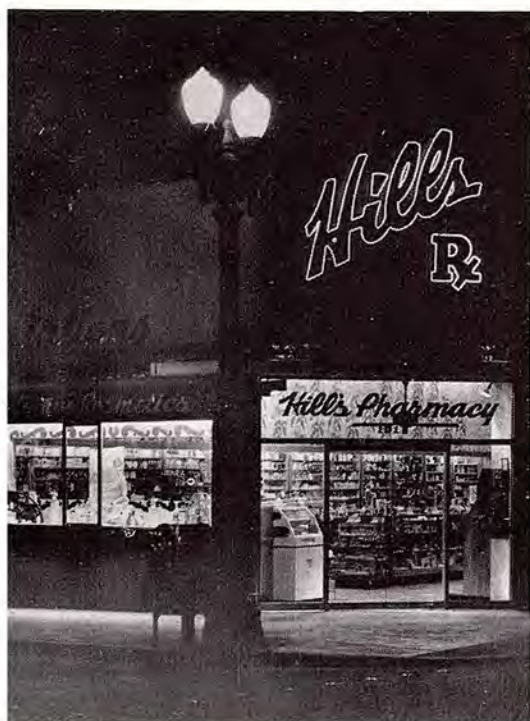


Betty Newberry and Adnee Hall are well pleased with the quality selections of ladies' dresses and sportswear at JUSTINES . . . 172 S. Greenleaf . . . phone 421-280.



Coffee time, and as usual BOWER'S DRUG STORE is the center of attention for students who expect and receive courteous service at the fountain. A wide selection of toiletries and drug sundries is made available to the students every need . . . phone 43-181.

Fine quality silver, diamonds, watches, and electrical appliances are to be found at KING JEWELRY CO. . . . 127 N. Greenleaf. Nesa Crofoot inspects a display of glittering silver.



HILLS PHARMACY . . . Greenleaf at Bailey . . . Whittier's most up-to-date Drug store. Here you will find a complete line of exclusive cosmetics as well as your prescription needs. Stanley R. Hill, PHG.

For an evening of relaxing entertainment visit one of BRUEN'S THEATRES . . . WHITTIER, WARDMAN, or ROXY. In the modern, attractive lobby of the Whittier theatre Kenny Pascoe, Willis Boyd, and Dick Deihl are served between features by Tom Hobbs.



THE LANTERN . . . 412 E. Philadelphia. Where college friends meet to eat. . . . A new and modern location with the same popularity.



A vast assortment of radio and television appliances as well as hardware supplies is provided by the FARMERS HARDWARE. Carol Williams and Jack Murdy are looking over some of the beautiful table model radios found at 180 N. Greenleaf . . . phone 426-38.



Attractive surroundings and fine food are enjoyed by Dave Reineman and Phyllis Weigel as they dine at the well-known HUGHESTON MEADOWS . . . 2726 E. Telegraph . . . catering to parties . . . phone 423-411.

Pretty as a picture describes Joyce Wyvell in one of the beautiful skirt and blouse combinations at TIBBETS . . . 101 S. Greenleaf. Here the student may find ladies' sportswear, suits, and coats.



Well represented on Whittier College campus is the attractive sportswear from BALLARD AND BROCKETT . . . 200 E. Philadelphia. Decorative examples are Louise Weingartner and Catherine Shanahan as they help beautify the campus.



That well-pleased look on the faces of Cl Hamilton and Ralph Myers is proof of the lent dry cleaning done by RAY CLEANERS . . . 416 E. Philadelphia.



For the gift shopper, GREY GIFT SHOP is indispensable. Joey Smith, Carolyn Broady, and Donna Spoon examine the vast selection at 128 E. Philadelphia.



The benefits of high interest and maximum safety of deposits are realized by Barbara Worthen and Eleanor Smith as they deal with QUAKER BLDG AND LOAN ASSOCIATION . . . for information call home loans . . . 135 S. Greenleaf or phone 426-95



With an eye to the future Jim Baldwin and Rosalind Miller receive information concerning real estate and insurance from EARL MYERS AND CO. . . . 117 E. Philadelphia . . . phone 420-77.

DAN E. STRUB . . . 208 E. Philadelphia . . . Listings of city and country property are shown to Carolyn Jones and Jo Ahlquist. For a complete line of insurance and property values phone 44-237.





For a special corsage for a special occasion it's MALINS FLOWER SHOP . . . 138 E. Philadelphia. Phil Weikert and Joan Spencer enjoy the colorful display . . . phone 43-150.

Carol Williams receives courteous and sound advice on a financial matter at the WHITTIER BLDG. AND LOAN ASSOCIATION . . . 210 E. Philadelphia. For information on home loans, insured savings, and escrows call 426-41.



Style and comfort in the line of footwear describes GREENWOOD's shoes . . . 10 N. Greenleaf. Pat Thomas and Betty Be appear well satisfied with the merchandise.

AILEEN'S . . . hats, handbags, and accessories at 218 Philadelphia. Joanne Sanquist reflects her admiration for this lovely chapeau.





VOTAW & KEYES, REALTORS . . . for information concerning income properties, building sites, homes, and business leases . . . drop in at their friendly office located at 143 W. Philadelphia . . . phone 446-56.

Taking time off from textbooks to read something of interest, Darleen Caldwell and Corliss Kranz enjoy the great variety of current novels at the WHITTIER BOOK STORE . . . a complete line of school supplies and stationery.



The "sunshine boys", Stan Wickland, Dick Walters, and John Kelly say "bottoms up" when it comes to milk from the WHITTIER SANITARY DAIRY CREAMERY . . . 126 S. Comstock.



V & M DRUG STORE . . . 136 N. Greenleaf . . . a complete line of Coty, Gourielle, DuBarry, Elmo cosmetics are featured . . . low down town prices.

Students always receive the quick courteous service they desire at JIM GERRARD'S DRIVE-IN MARKET . . . Philadelphia at Painter . . . phone 43-814. Just a step away to quality food.



What an organization does for itself is soon forgotten . . . what it does for the community lives forever . . . The WHITTIER CHAMBER OF COMMERCE is created to serve the community. Make use of its facilities . . . phone 426-671.



Wear and tear get quick repair at the VARSIT SHOP . . . Cleaners—Launderers . . . convenient located . . . 410 E. Philadelphia.



Hey, fellas, that truck's not for loafin'. It's for quick, economical service by the WHITTIER LAUNDRY . . . 202 S. Greenleaf.



Student leader, Leonard Crofoot, shops at the men's store that leads in quality merchandise. It's HILL'S CLOTHIER . . . 127 E. Philadelphia. "The House of Kuppenheimer Clothes."

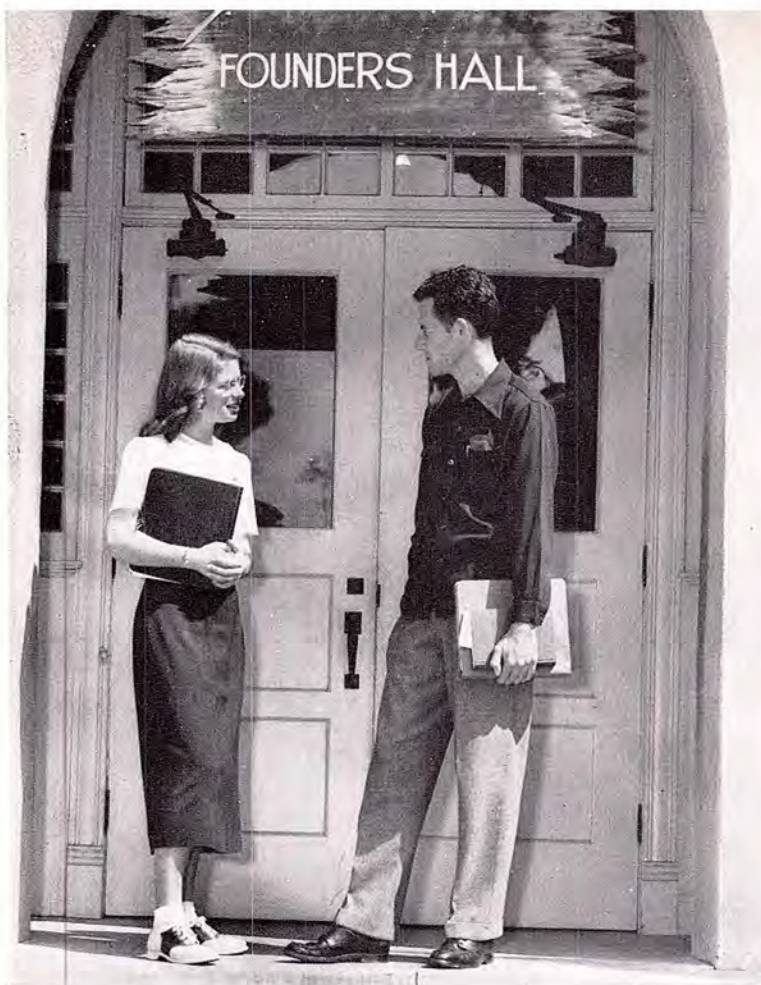
"Mirror, mirror on the wall . . ." Priscilla Montgomery receives a flattering reply in MYER'S popular ladies' apparel . . . 141 N. Greenleaf.





JACK'S SALAD BOWL . . . UPTOWN . . . AND BEVERLY . . . favorites with the college set for many years, Jack's restaurants have maintained a high standard of quality and have provided a modern setting for that special date.





In front of Founders or elsewhere on the campus, Whittier College students wear DOUGLAS shoes. John Price and Rosie Durston walk in comfort and style in footwear purchased at EARL DOUGLAS . . . 116 E. Philadelphia.

Whitey Bloom, Al Stoll, and Bill Payne talk over the football situation at WHITTIER SPORTING GOODS . . . 157 S. Greenleaf. Headquarters for athletic equipment and sporting supplies.





Wha' happened?

The Editor doffs his favorite angora toupee to the people without whose help and friendship this publication would never have been possible. To C. Scholfield for his artistic ability, to Roy Day of Progress-Bulletin for his patience, to George Peterson for his willingness and good nature, to Mr. Richardson the faculty advisor for his trust, to Carlton Casjens for his wit and help during the "big push", to Mr. Dill the photographer for his downright kindness and friendship, and finally an extra nod to the Advertisers for their business.





